



MASTER LEDtube InstantFit HF



MAS LEDtube HF 1200mm HO 14W865 T8

MASTER, LEDtube, T8, HF, 1200 mm, 14 W, 36W TL-D, 6500 K, 2100 lm, CRI 80, 75000 h

MASTER, LEDtube, T8, HF, 1200 mm, 14 W, LED alternative to 36W TL-D, 6500 K, 2100 lm, CRI 80, 75000 h, 150 lm/W, EEL D, G13 Rotatable end-cap, Plastic, 1200 mm, RGO, SDCM 6, PF 0.9, IP20, SVM 0.2, PstLM 0.5

Warnings and Safety

- NOTES: The overall energy efficiency and light distribution of any installation that uses these lamps are determined by the design of the installation.

Product data

General Information	
Cap base	G13 Rotatable end-cap
Nominal lifetime	75,000 h
Switching Cycle	50,000
Lighting Technology	LEDtube
Flux measurement reference	Sphere
Warranty period	5 years
Light Technical	
Colour Code	865 [CCT of 6500K]
Beam angle (nom.)	160 degree(s)
Luminous Flux	2,100 lm
Colour designation	Cool Daylight
Correlated Colour Temperature (Nom)	6500 K

Luminous efficacy (rated) (nom.)	150 lm/W
Colour consistency	<6
Colour rendering index (CRI)	80
LLMF at end of nominal lifetime (nom.)	70 %
Photobiological safety according to EN 62471	RG0
Operating and Electrical	
Line Frequency	20000-75000 Hz
Input frequency	20000-75000 Hz
Power Consumption	14 W
Lamp current (max.)	750 mA
Lamp current (min.)	300 mA
Starting time (nom.)	0.5 s
Warm-up time to 60% light	0.5 s

MASTER LEDtube InstantFit HF

Power Factor (Fraction)	0.9
Voltage (nom.)	30-80 V
LED alternative to fluorescent lamp power	36W TL-D
Inrush current at mains	-
Max. lamp no. on MCB B type 10A – Mains	-
Max. lamp no. on MCB B type 10A – EM ballast without Compensation Capacitor.	-
Max. lamp no. on MCB B type 10A – EM ballast with Compensation Capacitor.	-
Max. lamp no. on MCB B type 16A – Mains	-
Max. lamp no. on MCB B type 16A – EM ballast without Compensation Capacitor.	-
Max. lamp no. on MCB B type 16A – EM ballast with Compensation Capacitor.	-
Ballast Compatibility	HF

Temperature

T-Case maximum (nom.)	55 °C
-----------------------	-------

Controls and Dimming

Dimmable	Yes – Check ballast compatibility
----------	-----------------------------------

Mechanical and Housing

Lamp Finish	Frosted
Bulb material	Plastic
Product length	1,200 mm
Bulb shape	T8
Net Weight (Piece)	0.230 kg

Approval and Application

Energy Efficiency Class	D
-------------------------	---

Energy-saving product	Yes
Approval marks	RoHS compliance CE marking KEMA Keur certificate ENEC certificate
Energy consumption kWh/1,000 hours	14 kWh
EPREL Registration Number	1165510
CE mark	Yes
EU RoHS compliant	Yes
Flickering value (PstLM)	0.5
Stroboscopic effect	0.2
Ambient temperature range	-20°C to 45°C

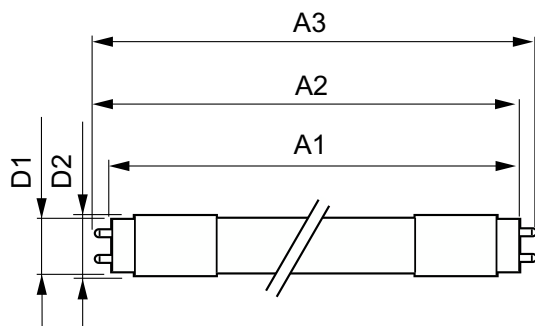
Application Conditions

Wireless Technology	Not applicable
---------------------	----------------

Product Data

Order product name	MAS LEDtube HF 1200mm HO 14W865 T8
Full product name	MAS LEDtube HF 1200mm HO 14W865 T8
Full EOC	871951446686900
Order code	929003553602
Material no. (12 NC)	929003553602
Numerator – quantity per pack	1
EAN/UPC – Product/Case	8719514466869
Numerator – packs per outer box	20
EAN/UPC – Case	8719514466876

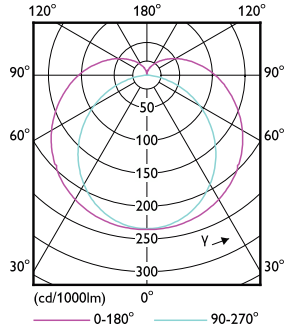
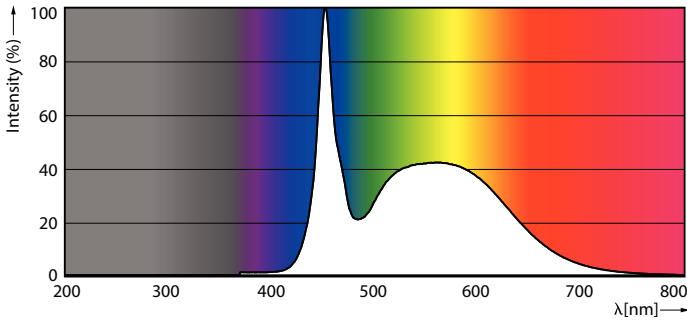
Dimensional drawing



Product	D1	D2	A1	A2	A3
MAS LEDtube HF 1200mm HO 14W865 T8	25.8 mm	28 mm	1,198.2 mm	1,205.3 mm	1,212.4 mm

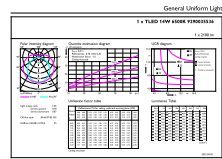
MASTER LEDtube InstantFit HF

Photometric data



Spectral Power Distribution Colour - MAS LEDtube HF 1200mm HO 14W865 T8

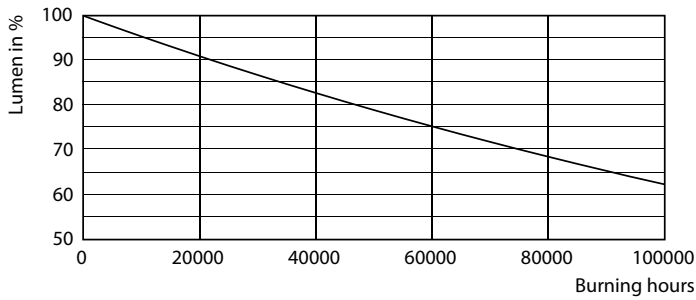
Light Distribution Diagram - MAS LEDtube HF 1200mm HO 14W865 T8



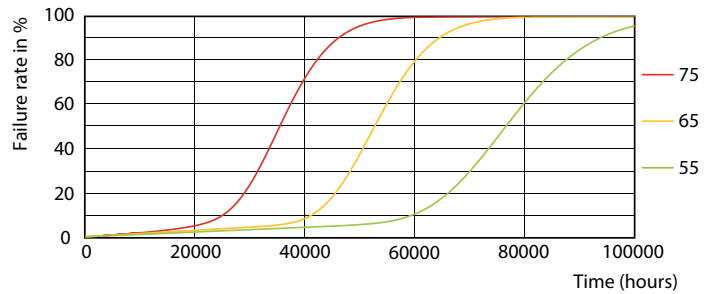
General Uniform Lighting

General uniform lighting - MAS LEDtube HF 1200mm HO 14W865 T8

Lifetime



Lumen Maintenance Diagram - MAS LEDtube HF 1200mm HO 14W865 T8



LEDtube-75K-5575-FailureRate-LED

MASTER LEDtube InstantFit HF

Lifetime



Lumen Maintenance Diagram - MAS LEDtube HF 1200mm HO 14W865 T8

Life Expectancy Diagram



LifetimeVsTc

