



CorePro LED tube EM/ Mains T8

CorePro LEDtube 1500mm 21.4W 865 T8AU2CT

CorePro, LEDtube, T8, EM/Mains, Single-end, 1500 mm, 220-240 V, 21.4 W, 58W TL-D, 6500 K, 2200 lm, 50000 hour(s)

Philips CorePro LEDtubes are the quick and easy way to replace T8 fluorescent or other LED tubes with a fast pay back time. Not only does the Core range of LEDtubes require a low initial investment, but LED energy efficiency also delivers instant savings that you can bank on over a long and reliable lifetime. Plus, with the same lamp size and light distribution as fluorescent alternatives, you'll never know the difference. There are two ways to install these LED tubes: Rewire your existing fluorescent-based luminaires so the CorePro LEDtubes work directly on the Mains. Or simply change the fluorescent starter to an LED starter that can be used with your Electromagnetic ballasts.

Warnings and Safety

- NOTE: The overall energy efficiency and light distribution of any installation that uses these lamps will be determined by the design of the installation.
- Installation must be done according to the installation diagrams provided with the lamp or available online. Installation must be done by a certified professional.

Product data

General Information		Light Technical	
Cap-Base	G13	Color Code	865 [CCT of 6500K]
Nominal lifetime	50,000 hour(s)	Beam Angle (Nom)	240 degree(s)
Switching Cycle	200,000	Luminous Flux	2,200 lm
Lighting Technology	LEDtube	Color Designation	Cool Daylight
		Correlated Color Temperature (Nom)	6500 K

CorePro LED tube EM/Mains T8

Luminous Efficacy (rated) (Nom)	102 lm/W
Color Consistency	<6
Color rendering index (CRI)	80
LLMF At End Of Nominal Lifetime (Nom)	70 %
Photobiological safety according to EN 62471 RGO	

Operating and Electrical

Input Frequency	50 to 60 Hz
Power Consumption	21.4 W
Lamp Current (Nom)	105 mA
Wattage Equivalent	58 W
Starting Time (Nom)	0.5 s
Warm-up time to 60% light	0.5 s
Power Factor (Fraction)	0.9
Voltage (Nom)	220-240 V
LED alternative to fluorescent lamp power	58W TL-D
Ballast Compatibility	EM/Mains

Temperature

T-Case Maximum (Nom)	60 °C
----------------------	-------

Controls and Dimming

Dimmable	No
----------	----

Mechanical and Housing

Bulb Finish	Frosted
Bulb Material	Glass

Product Length	1,500 mm
Bulb Shape	T8
Net Weight (Piece)	0.270 kg

Approval and Application

Energy Saving Product	Yes
Approval Marks	RoHS compliance KEMA Keur certificate
EU RoHS compliant	Yes
Ambient temperature range	-20 to +45 °C

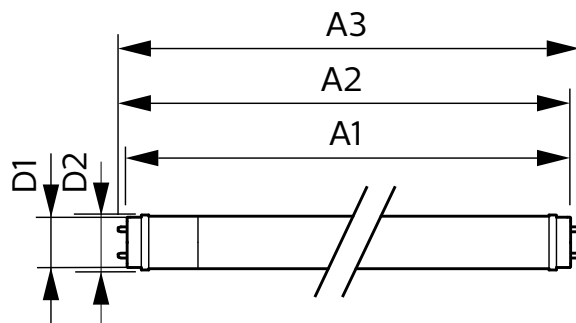
Application Conditions

Wireless Technology	Not applicable
---------------------	----------------

Product Data

Order product name	CorePro LEDtube 1500mm 21.4W 865 T8AU2CT
Full product name	CorePro LEDtube 1500mm 21.4W 865 T8AU2CT
Full product code	872110304435800
Order code	929003547521
Material Nr. (12NC)	929003547521
Numerator - Quantity Per Pack	2
EAN/UPC - Product/Case	8721103044358
Numerator - Packs per outer box	5
EAN/UPC - Case	8721103044365

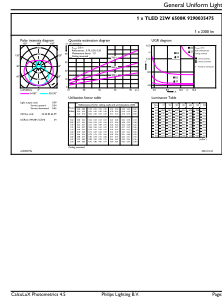
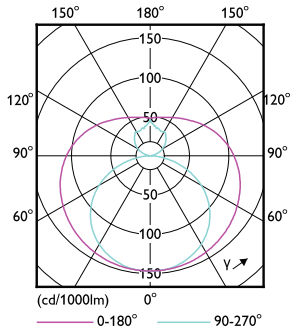
Dimensional drawing



Product	D1	D2	A1	A2	A3
CorePro LEDtube 1500mm 21.4W 865 T8AU2CT	25.7 mm	28 mm	1,500 mm	1,507.1 mm	1,514.2 mm

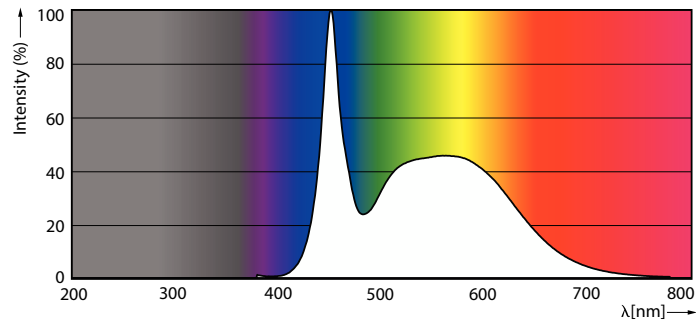
CorePro LED tube EM/Mains T8

Photometric data



Light Distribution Diagram - CorePro LEDtube 1500mm 21.4W 865 T8AU2CT

General uniform lighting - CorePro LEDtube 1500mm 21.4W 865 T8AU2CT

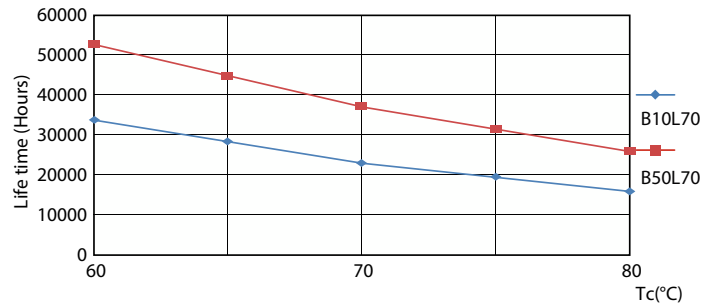


Spectral Power Distribution Colour - CorePro LEDtube 1500mm 21.4W 865 T8AU2CT

Lifetime



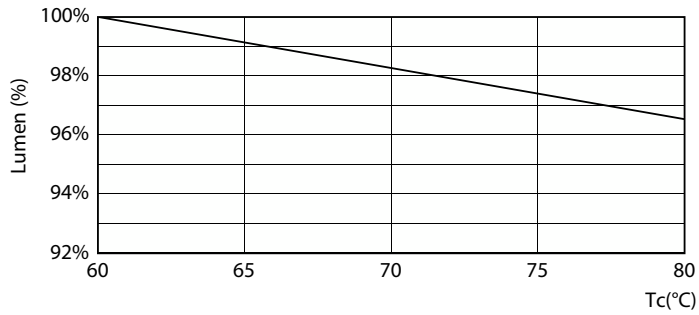
Life Expectancy Diagram



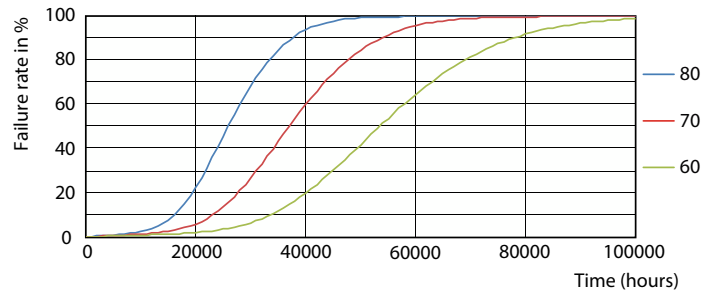
LifetimeVsTc

CorePro LED tube EM/Mains T8

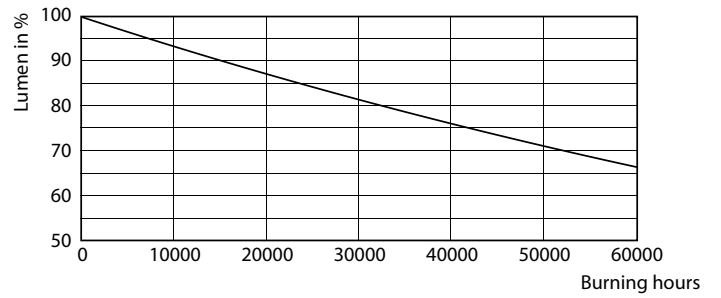
Lifetime



Lumen Maintenance Diagram - CorePro LEDtube 1500mm 21.4W 865 T8AU2CT



FailureRate



Lumen Maintenance Diagram - CorePro LEDtube 1500mm 21.4W 865 T8AU2CT

