



CorePro LED tube EM/ Mains T8



CorePro LEDtube 1500mm 20W 840 T8

CorePro, LEDtube, T8, EM/Mains, 1500 mm, 20 W, 58W TL-D, 4000 K, 2200 lm, CRI 80, 50000 hour(s)

Philips CorePro LEDtubes are the quick and easy way to replace T8 fluorescent or other LED tubes with a fast pay back time. Not only does the Core range of LEDtubes require a low initial investment, but LED energy efficiency also delivers instant savings that you can bank on over a long and reliable lifetime. Plus, with the same lamp size and light distribution as fluorescent alternatives, you'll never know the difference. There are two ways to install these LED tubes: Rewire your existing fluorescent-based luminaires so the CorePro LEDtubes work directly on the Mains. Or simply change the fluorescent starter to an LED starter that can be used with your Electromagnetic ballasts.

Warnings and Safety

- NOTE: The overall energy efficiency and light distribution of any installation that uses these lamps will be determined by the design of the installation.
- Installation must be done according to the installation diagrams provided with the lamp or available online. Installation must be done by a certified professional.

Product data

General Information		Warranty period	
Cap-Base	G13	3 years	
Nominal lifetime	50,000 hour(s)	Light Technical	
Switching Cycle	200,000	Color Code	840 [CCT of 4000K]
Lighting Technology	LEDtube	Beam Angle (Nom)	240 degree(s)
Flux measurement reference	Sphere	Luminous Flux	2,200 lm

CorePro LED tube EM/Mains T8

Color Designation	Cool White (CW)
Correlated Color Temperature (Nom)	4000 K
Luminous Efficacy (rated) (Nom)	110 lm/W
Color Consistency	<6
Color rendering index (CRI)	80
LLMF At End Of Nominal Lifetime (Nom)	70 %
Photobiological safety according to EN 62471	RG0

Operating and Electrical

Line Frequency	50 to 60 Hz
Input Frequency	50 to 60 Hz
Power Consumption	20 W
Lamp Current (Nom)	105 mA
Starting Time (Nom)	0.5 s
Warm-up time to 60% light	0.5 s
Power Factor (Fraction)	0.9
Voltage (Nom)	220-240 V
LED alternative to fluorescent lamp power	58W TL-D
Inrush current at mains	7.4
Max. lamp no. on MCB B type 10A - Mains	51
Max. lamp no. on MCB B type 10A – EM ballast without Compensation Capacitor.	76
Max. lamp no. on MCB B type 10A – EM ballast with Compensation Capacitor.	17
Max. lamp no. on MCB B type 16A - Mains	82
Max. lamp no. on MCB B type 16A – EM ballast without Compensation Capacitor.	122
Max. lamp no. on MCB B type 16A – EM ballast with Compensation Capacitor.	27
Ballast Compatibility	EM/Mains

Temperature

T-Case Maximum (Nom)	60 °C
----------------------	-------

Controls and Dimming

Dimmable	No
----------	----

Mechanical and Housing

Bulb Finish	Frosted
-------------	---------

Bulb Material	Glass
Product Length	1,500 mm
Bulb Shape	T8
Net Weight (Piece)	0.220 kg

Approval and Application

Energy Efficiency Class	E
Energy Saving Product	Yes
Approval Marks	RoHS compliance CE marking KEMA Keur certificate
Energy Consumption kWh/1000 h	20 kWh
EPREL Registration Number	1827700
CE mark	Yes
EU RoHS compliant	Yes
Flickering value (PstLM) - Flickering value as per EN 61000-3-3	1
Stroboscopic effect visibility measure (SVM)	0.4
Ambient temperature range	-20 to +45 °C

Application Conditions

can it be used in closed luminaires	Yes
-------------------------------------	-----

Product Data

Order product name	CorePro LEDtube 1500mm 20W 840 T8
Full product name	CorePro LEDtube 1500mm 20W 840 T8
Full product code	871951445981600
Order code	929003547402
Material Nr. (12NC)	929003547402
Numerator - Quantity Per Pack	1
EAN/UPC - Product/Case	8719514459816
Numerator - Packs per outer box	20
EAN/UPC - Case	8719514459823

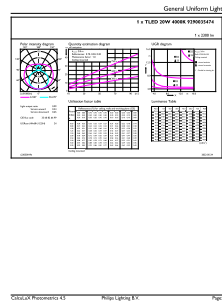
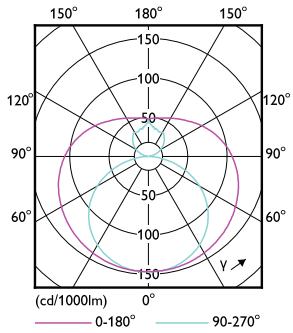
CorePro LED tube EM/Mains T8

Dimensional drawing



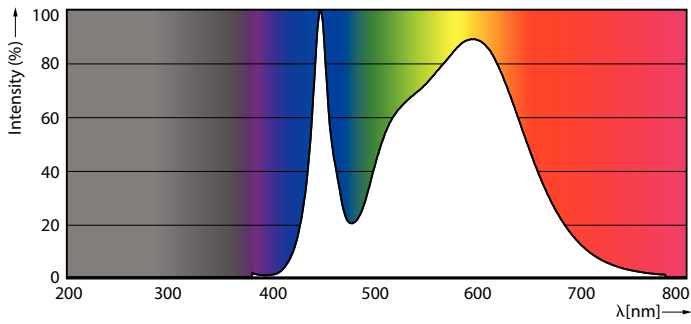
Product	D1	D2	A1	A2	A3
CorePro LEDtube 1500mm 20W 840 T8	25.7 mm	28 mm	1,500 mm	1,507.1 mm	1,514.2 mm

Photometric data



Light Distribution Diagram - CorePro LEDtube 1500mm 20W 840 T8

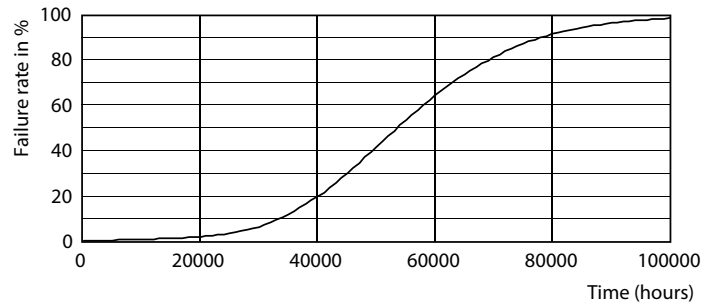
General uniform lighting - CorePro LEDtube 1500mm 20W 840 T8



Spectral Power Distribution Colour - CorePro LEDtube 1500mm 20W 840 T8

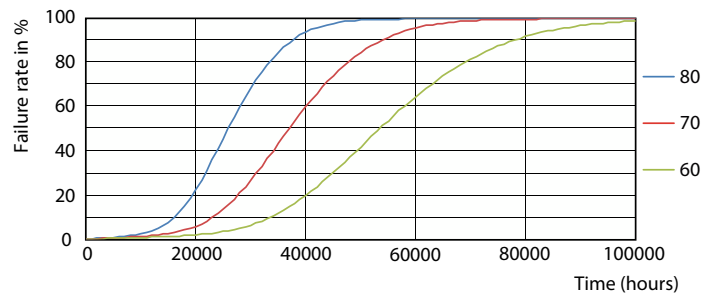
CorePro LED tube EM/Mains T8

Lifetime



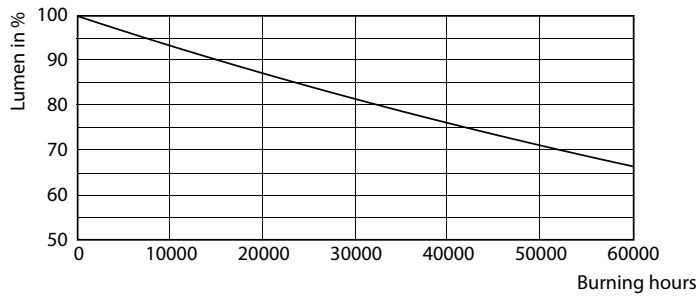
Lumen Maintenance Diagram - CorePro LEDtube 1500mm 20W 840 T8

Life Expectancy Diagram



LifetimeVsTc

FailureRate



Lumen Maintenance Diagram - CorePro LEDtube 1500mm 20W 840 T8

CorePro LED tube EM/Mains T8

