



CorePro LED tube EM/ Mains T8

CorePro LEDtube 600mm 8W 865 T8 AP I

CorePro, LEDtube, T8, EM/Mains, 600 mm, 220-240 V, 8 W, 18W TL-D, 6500 K, 800 lm, 50000 hour(s)

The CorePro LEDtube is an affordable LED solution suitable for replacing T8 fluorescent lamps. The product provides a natural lighting effect for use in general lighting applications, as well as instant energy savings – an environmentally friendly solution.

Warnings and Safety

• -

Product data

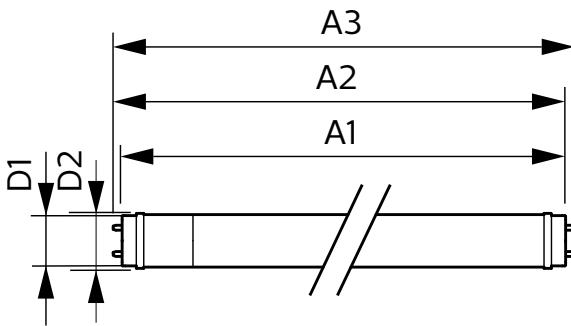
| General Information | | Color rendering index (CRI) | |
|------------------------------------|--------------------|--|-------------|
| Cap-Base | G13 | | 80 |
| Nominal lifetime | 50,000 hour(s) | LLMF At End Of Nominal Lifetime (Nom) | 70 % |
| Switching Cycle | 200,000 | Photobiological safety according to EN 62471 RGO | |
| Lighting Technology | LEDtube | Operating and Electrical | |
| Light Technical | | Input Frequency | 50 to 60 Hz |
| Color Code | 865 [CCT of 6500K] | Power Consumption | 8 W |
| Beam Angle (Nom) | 240 degree(s) | Lamp Current (Nom) | 46 mA |
| Luminous Flux | 800 lm | Starting Time (Nom) | 0.5 s |
| Color Designation | Cool Daylight | Warm-up time to 60% light | 0.5 s |
| Correlated Color Temperature (Nom) | 6500 K | Power Factor (Fraction) | 0.9 |
| Luminous Efficacy (rated) (Nom) | 100 lm/W | Voltage (Nom) | 220-240 V |
| Color Consistency | <6 | LED alternative to fluorescent lamp power | 18W TL-D |

CorePro LED tube EM/Mains T8

| | |
|---------------------------------|---------------------------------------|
| Ballast Compatibility | EM/Mains |
| Temperature | |
| T-Case Maximum (Nom) | 50 °C |
| Controls and Dimming | |
| Dimmable | No |
| Mechanical and Housing | |
| Bulb Finish | Frosted |
| Bulb Material | Glass |
| Product Length | 600 mm |
| Bulb Shape | T8 |
| Net Weight (Piece) | 0.120 kg |
| Approval and Application | |
| Energy Saving Product | Yes |
| Approval Marks | RoHS compliance KEMA Keur certificate |

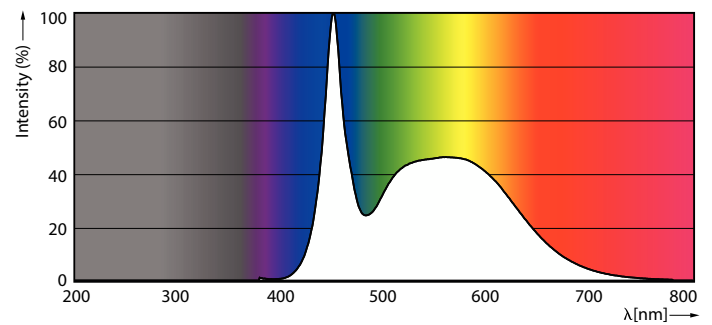
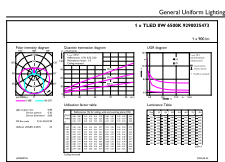
| | |
|---------------------------------|--------------------------------------|
| EU RoHS compliant | Yes |
| Ambient temperature range | -20 to +45 °C |
| Product Data | |
| Order product name | CorePro LEDtube 600mm 8W 865 T8 AP I |
| Full product name | CorePro LEDtube 600mm 8W 865 T8 AP I |
| Full product code | 872016927704500 |
| Order code | 929003547308 |
| Material Nr. (12NC) | 929003547308 |
| Numerator - Quantity Per Pack | 1 |
| EAN/UPC - Product/Case | 8720169277045 |
| Numerator - Packs per outer box | 20 |
| EAN/UPC - Case | 8720169277052 |

Dimensional drawing



| Product | D1 | D2 | A1 | A2 | A3 |
|--------------------------------------|-------|-------|----------|----------|----------|
| CorePro LEDtube 600mm 8W 865 T8 AP I | 28 mm | 28 mm | 588.5 mm | 595.5 mm | 602.5 mm |

Photometric data

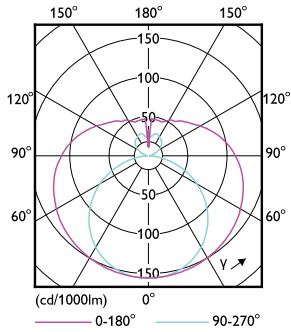


General uniform lighting - CorePro LEDtube 600mm 8W 865 T8 AP I

Spectral Power Distribution Colour - CorePro LEDtube 600mm 8W 865 T8 AP I

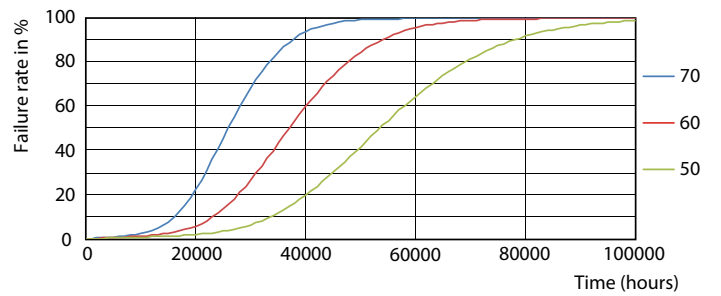
CorePro LED tube EM/Mains T8

Photometric data



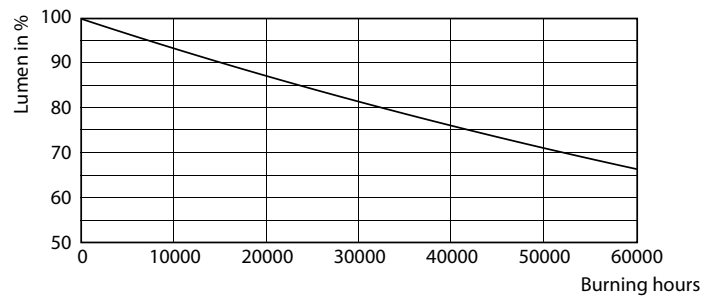
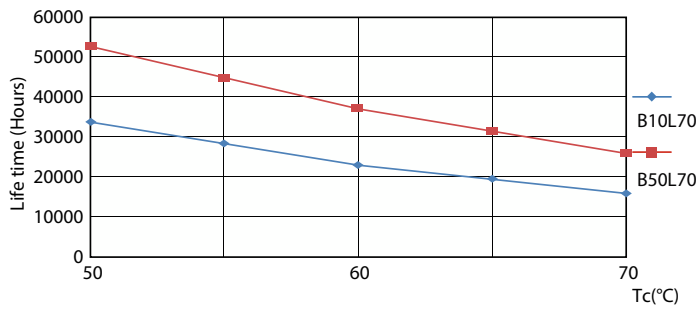
Light Distribution Diagram - CorePro LEDtube 600mm 8W 865 T8 AP I

Lifetime



Life Expectancy Diagram

FailureRate

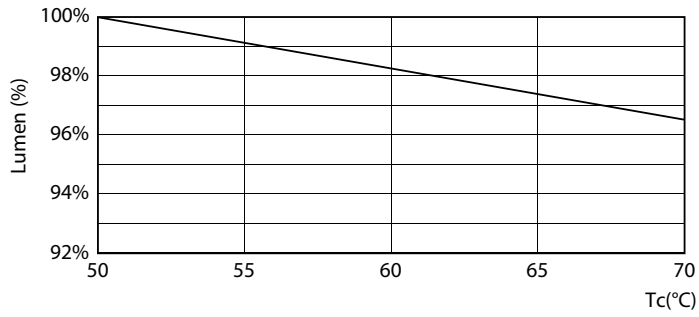


LifetimeVsTc

Lumen Maintenance Diagram - CorePro LEDtube 600mm 8W 865 T8 AP I

CorePro LED tube EM/Mains T8

Lifetime



Lumen Maintenance Diagram - CorePro LEDtube 600mm 8W 865 T8 AP I

