



# CorePro LED tube EM/ Mains T8

## CorePro LEDtube 600mm 8W 865 T8 AP I

CorePro, LEDtube, T8, EM/Mains, 600 mm, 220-240 V, 8 W, 18W TL-D, 6500 K, 800 lm, 50000 hour(s)

Philips CorePro LEDtubes are the quick and easy way to replace T8 fluorescent or other LED tubes with a fast pay back time. Not only does the Core range of LEDtubes require a low initial investment, but LED energy efficiency also delivers instant savings that you can bank on over a long and reliable lifetime. Plus, with the same lamp size and light distribution as fluorescent alternatives, you'll never know the difference. There are two ways to install these LED tubes: Rewire your existing fluorescent-based luminaires so the CorePro LEDtubes work directly on the Mains. Or simply change the fluorescent starter to an LED starter that can be used with your Electromagnetic ballasts.

### Warnings and Safety

- NOTE: The overall energy efficiency and light distribution of any installation that uses these lamps will be determined by the design of the installation.
- Installation must be done according to the installation diagrams provided with the lamp or available online. Installation must be done by a certified professional.

### Product data

General Information		Light Technical	
Cap-Base	G13	Color Code	865 [CCT of 6500K]
Nominal lifetime	50,000 hour(s)	Beam Angle (Nom)	240 degree(s)
Switching Cycle	200,000	Luminous Flux	800 lm
Lighting Technology	LEDtube	Color Designation	Cool Daylight
		Correlated Color Temperature (Nom)	6500 K

## CorePro LED tube EM/Mains T8

Luminous Efficacy (rated) (Nom)	100 lm/W
Color Consistency	<6
Color rendering index (CRI)	80
LLMF At End Of Nominal Lifetime (Nom)	70 %
Photobiological safety according to EN 62471	RG0

### Operating and Electrical

Input Frequency	50 to 60 Hz
Power Consumption	8 W
Lamp Current (Nom)	46 mA
Starting Time (Nom)	0.5 s
Warm-up time to 60% light	0.5 s
Power Factor (Fraction)	0.9
Voltage (Nom)	220-240 V
LED alternative to fluorescent lamp power	18W TL-D
Ballast Compatibility	EM/Mains

### Temperature

T-Case Maximum (Nom)	50 °C
----------------------	-------

### Controls and Dimming

Dimmable	No
----------	----

### Mechanical and Housing

Bulb Finish	Frosted
Bulb Material	Glass
Product Length	600 mm

Bulb Shape	T8
Net Weight (Piece)	0.120 kg

### Approval and Application

Energy Saving Product	Yes
Approval Marks	RoHS compliance KEMA Keur certificate
EU RoHS compliant	Yes
Ambient temperature range	-20 to +45 °C

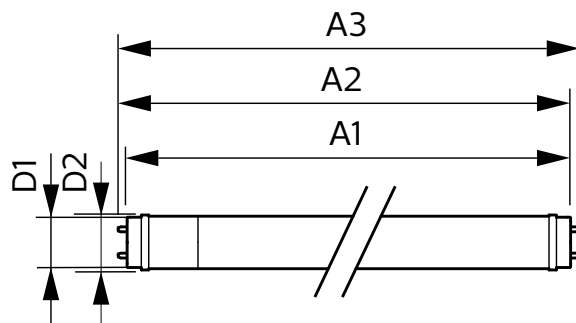
### Application Conditions

Wireless Technology	Not applicable
---------------------	----------------

### Product Data

Order product name	CorePro LEDtube 600mm 8W 865 T8 AP I
Full product name	CorePro LEDtube 600mm 8W 865 T8 AP I
Full product code	872016927704500
Order code	929003547308
Material Nr. (12NC)	929003547308
Numerator - Quantity Per Pack	1
EAN/UPC - Product/Case	8720169277045
Numerator - Packs per outer box	20
EAN/UPC - Case	8720169277052

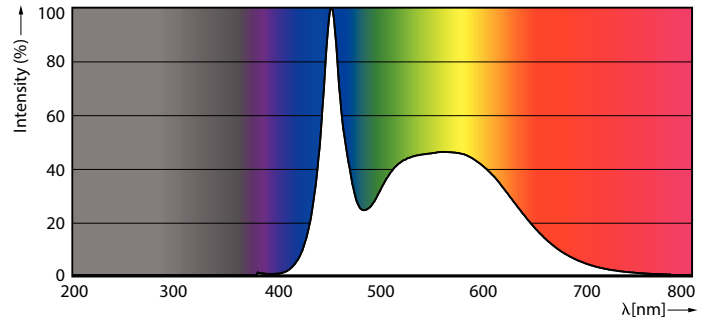
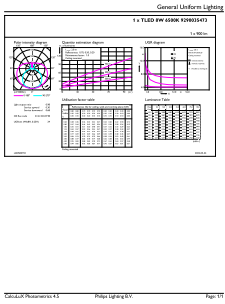
### Dimensional drawing



Product	D1	D2	A1	A2	A3
CorePro LEDtube 600mm 8W 865 T8 AP I	28 mm	28 mm	588.5 mm	595.5 mm	602.5 mm

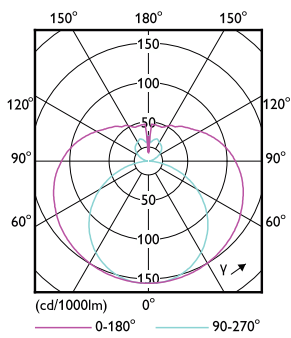
# CorePro LED tube EM/Mains T8

## Photometric data



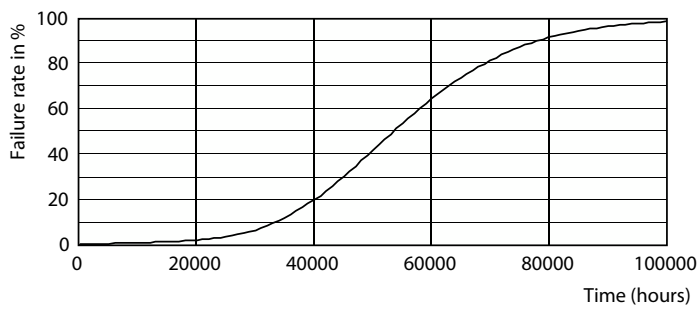
General uniform lighting - CorePro LEDtube 600mm 8W 865 T8 AP I

Spectral Power Distribution Colour - CorePro LEDtube 600mm 8W 865 T8 AP I

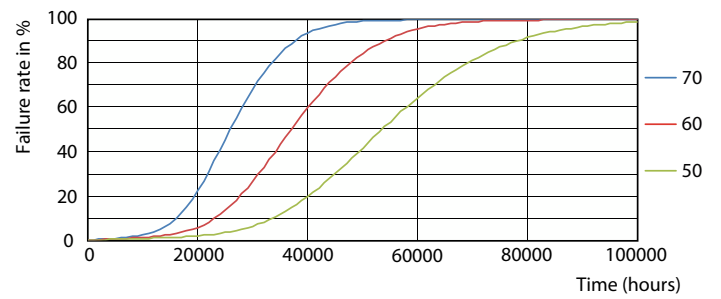


Light Distribution Diagram - CorePro LEDtube 600mm 8W 865 T8 AP I

## Lifetime



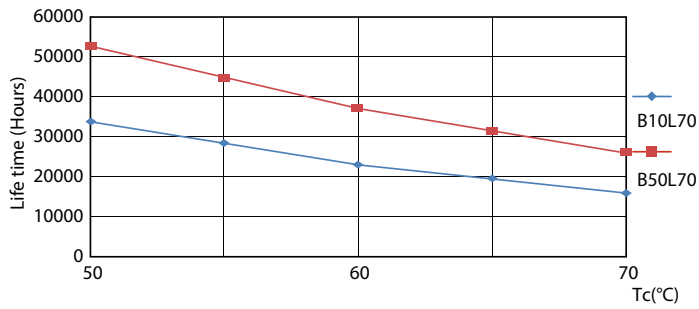
Life Expectancy Diagram



FailureRate

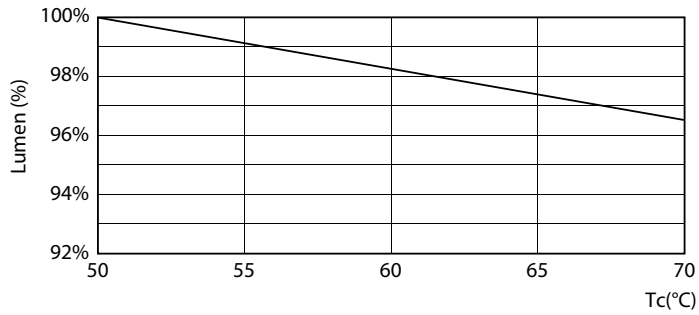
# CorePro LED tube EM/Mains T8

## Lifetime



LifetimeVsTc

Lumen Maintenance Diagram - CorePro LEDtube 600mm 8W 865 T8 AP I



Lumen Maintenance Diagram - CorePro LEDtube 600mm 8W 865 T8 AP I

