



MasterClass MainsFit (UL Type-B) T8

14.5T8/MAS/48-850/MF21/P/DIM 25/1

MasterClass, LEDtube, T8, 1200 mm, 14.5 W, 5000 K, 2100 lm, 70000 hour(s)

The MasterClass MainsFit (UL Type B) T8 lamps are designed to be the perfect retrofit solution to move from traditional fluorescent lamps to energy saving LEDs. This ballast bypass lamp has everything needed built into the lamp with proven energy savings, long life (70k hours), surge suppression and industry leading safety features. All lamps in the MasterClass MainsFit family are double-ended to help simplify the installation. In addition, all lamps meet the Philips standards for light quality so that end users will be in a comfortable environment regardless of the MasterClass MainsFit lamp type.

Product data

General Information	
Cap-Base	G13
Nominal lifetime	70,000 hour(s)
Switching Cycle	50,000
Lighting Technology	LEDtube

Light Technical	
Color Code	850 [CCT of 5000K]
Beam Angle (Nom)	180 degree(s)
Luminous Flux	2,100 lm
Color Designation	Daylight
Correlated Color Temperature (Nom)	5000 K
Luminous Efficacy (rated) (Nom)	144.00 lm/W

Color Consistency	<5
Color rendering index (CRI)	80
LLMF At End Of Nominal Lifetime (Nom)	70 %

Operating and Electrical	
Line Frequency	50 to 60 Hz
Input Frequency	50 to 60 Hz
Power Consumption	14.5 W
Lamp Current (Max)	125 mA
Lamp Current (Min)	58 mA
Wattage Equivalent	32 W
Starting Time (Nom)	0.5 s
Warm-up time to 60% light	0.5 s

MasterClass MainsFit (UL Type-B) T8

Power Factor (Fraction)	0.9
Voltage (Nom)	120-277 V
UL Type	UL Type B

Temperature

T-Case Maximum (Nom)	70 °C
----------------------	-------

Controls and Dimming

Dimmable	Only with specific dimmers
----------	----------------------------

Mechanical and Housing

Bulb Finish	Frosted
Bulb Material	Plastic
Product Length	1,200 mm
Bulb Shape	T8
Net Weight (Piece)	0.210 kg

Approval and Application

Energy Saving Product	Yes
Approval Marks	RoHS compliance UL certificate DLC compliance

EU RoHS compliant	Yes
Ambient temperature range	-20 °C to 45 °C

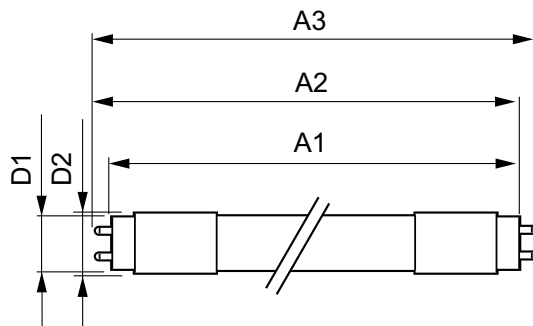
Application Conditions

can it be used in closed luminaires	Yes
Wireless Technology	Not applicable

Product Data

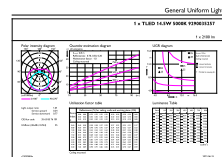
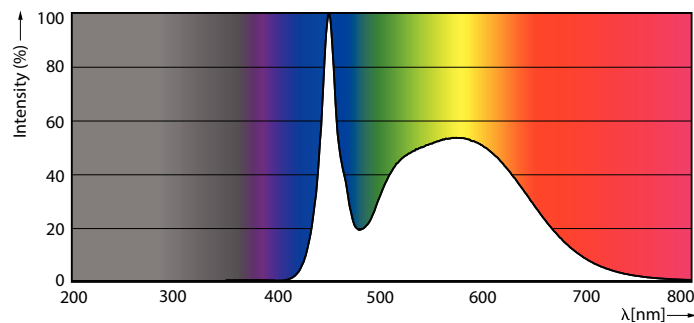
Order product name	14.5T8/MAS/48-850/MF21/P/DIM 25/1
Full product name	14.5T8/MAS/48-850/MF21/P/DIM 25/1
Order code	929003525704
Material Nr. (12NC)	929003525704
Numerator - Quantity Per Pack	1
EAN/UPC - Product/Case	046677579500
Numerator - Packs per outer box	25
EAN/UPC - Case	50046677579505

Dimensional drawing



Product	D1	D2	A1	A2	A3
14.5T8/MAS/48-850/MF21/P/DIM 25/1	25.7 mm	28 mm	1,198.2 mm	1,205.3 mm	1,212.4 mm

Photometric data

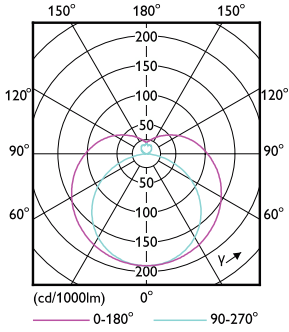


Spectral Power Distribution Colour - 14.5T8/MAS/48-850/MF21/P/DIM 25/1

General uniform lighting - 14.5T8/MAS/48-850/MF21/P/DIM 25/1

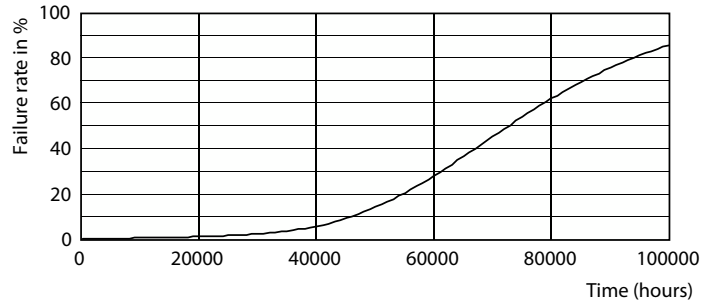
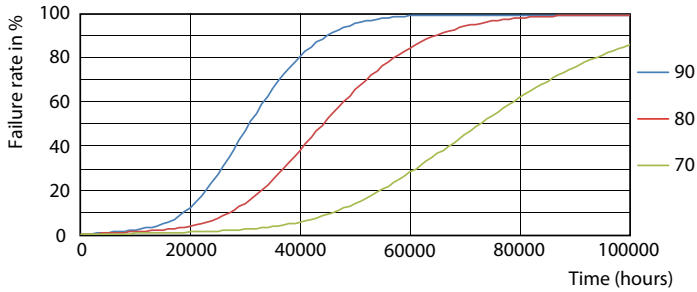
MasterClass MainsFit (UL Type-B) T8

Photometric data

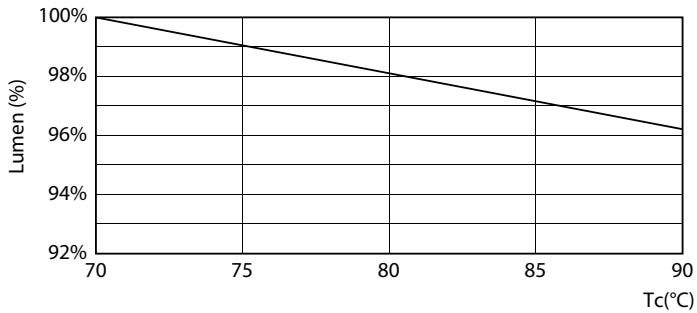


Light Distribution Diagram - 14.5T8/MAS/48-850/MF21/P/DIM 25/1

Lifetime

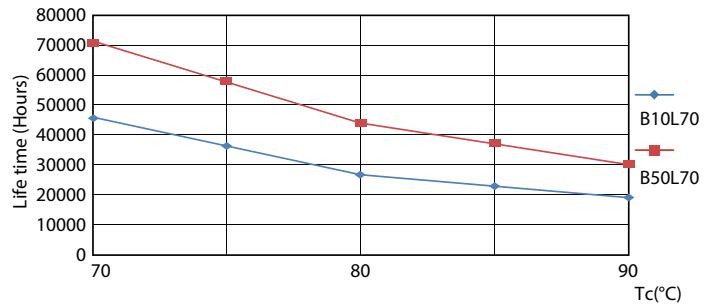


FailureRate



Lumen Maintenance Diagram - 14.5T8/MAS/48-850/MF21/P/DIM 25/1

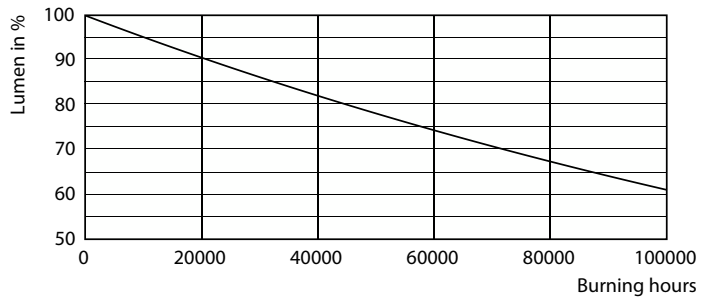
Life Expectancy Diagram



LifetimeVsTc

MasterClass MainsFit (UL Type-B) T8

Lifetime



Lumen Maintenance Diagram - 14.5T8/MAS/48-850/MF21/P/DIM 25/1

