



# CorePro LED tube EM/ Mains T8

## CorePro LEDtube HO 1200mm 18W 865 T8 PH

CorePro, LEDtube, T8, EM/Mains, Single-end, 1200 mm, 220-240 V, 18 W, 36W TL-D, 6500 K, 2100 lm, 50000 hour(s)

The CorePro LEDtube is an affordable LED solution suitable for replacing T8 fluorescent lamps. The product provides a natural lighting effect for use in general lighting applications, as well as instant energy savings – an environmentally friendly solution.

### Warnings and Safety

• -

### Product data

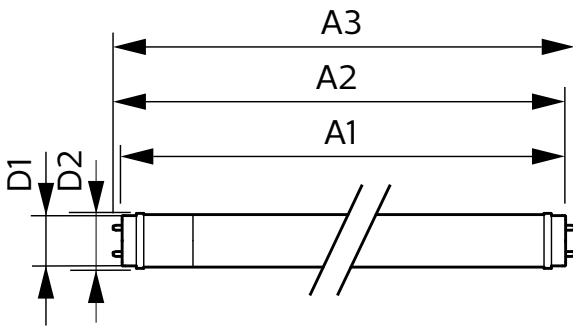
General Information		Color rendering index (CRI)	
Cap-Base	G13		80
Nominal lifetime	50,000 hour(s)	LLMF At End Of Nominal Lifetime (Nom)	70 %
Switching Cycle	200,000	Photobiological safety according to EN 62471 RGO	
Lighting Technology	LEDtube	Operating and Electrical	
Light Technical		Input Frequency	50 to 60 Hz
Color Code	865 [CCT of 6500K]	Power Consumption	18 W
Beam Angle (Nom)	240 degree(s)	Lamp Current (Nom)	100 mA
Luminous Flux	2,100 lm	Wattage Equivalent	36 W
Color Designation	Cool Daylight	Starting Time (Nom)	0.5 s
Correlated Color Temperature (Nom)	6500 K	Warm-up time to 60% light	0.5 s
Luminous Efficacy (rated) (Nom)	116 lm/W	Power Factor (Fraction)	0.9
Color Consistency	<6	Voltage (Nom)	220-240 V
		LED alternative to fluorescent lamp power	36W TL-D

# CorePro LED tube EM/Mains T8

Ballast Compatibility	EM/Mains
<b>Temperature</b>	
T-Case Maximum (Nom)	55 °C
<b>Controls and Dimming</b>	
Dimmable	No
<b>Mechanical and Housing</b>	
Bulb Finish	Frosted
Bulb Material	Glass
Product Length	1,200 mm
Bulb Shape	T8
Net Weight (Piece)	0.200 kg
<b>Approval and Application</b>	
Energy Saving Product	Yes
Approval Marks	RoHS compliance KEMA Keur certificate

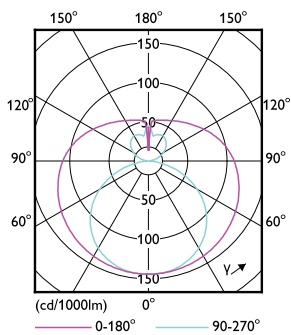
CE mark	Yes
EU RoHS compliant	Yes
Ambient temperature range	-20 to +45 °C
<b>Product Data</b>	
Order product name	CorePro LEDtube HO 1200mm 18W 865 T8 PH
Full product name	CorePro LEDtube HO 1200mm 18W 865 T8 PH
Full product code	872016919700800
Order code	929003520888
Material Nr. (12NC)	929003520888
Numerator - Quantity Per Pack	1
EAN/UPC - Product/Case	8720169197008
Numerator - Packs per outer box	20
EAN/UPC - Case	8720169197015

## Dimensional drawing

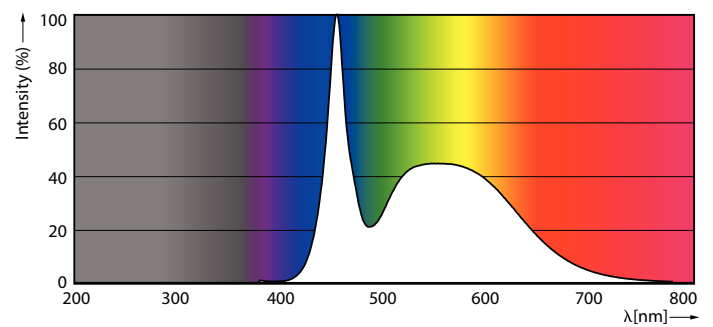


Product	D1	D2	A1	A2	A3
CorePro LEDtube HO 1200mm 18W 865 T8 PH	25.7 mm	28 mm	1,198 mm	1,205 mm	1,212 mm

## Photometric data



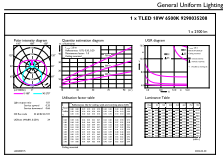
Light Distribution Diagram - CorePro LEDtube HO 1200mm 18W 865 T8 PH



Spectral Power Distribution Colour - CorePro LEDtube HO 1200mm 18W 865 T8 PH

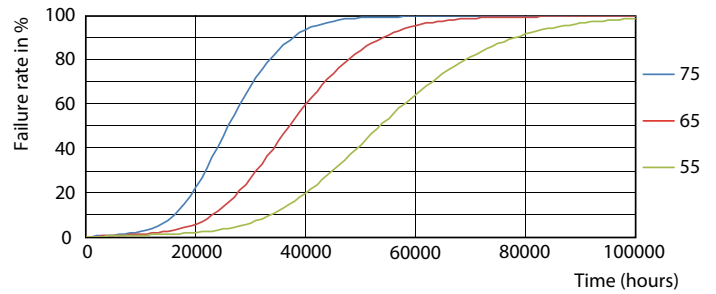
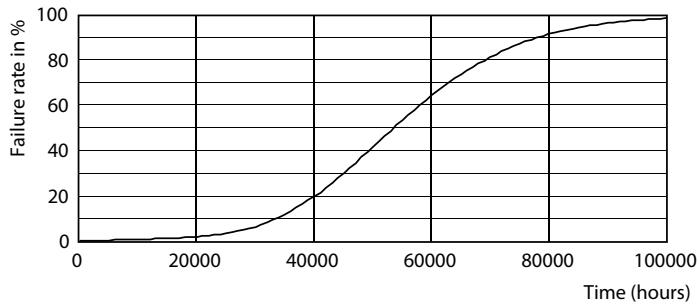
# CorePro LED tube EM/Mains T8

## Photometric data

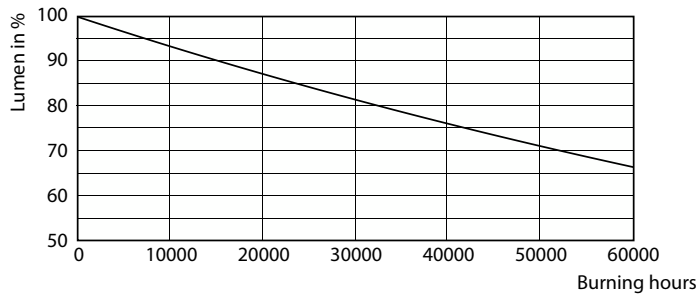


General uniform lighting - CorePro LEDtube HO 1200mm 18W 865 T8 PH

## Lifetime

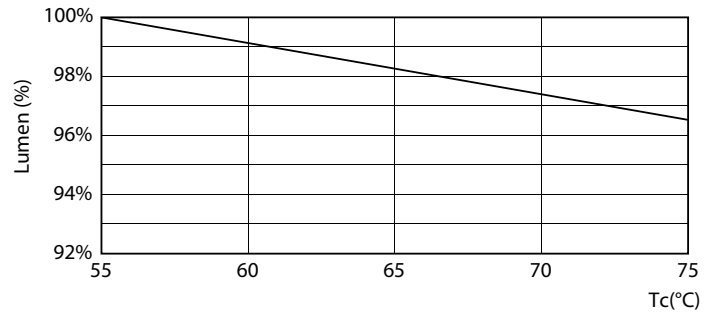


Life Expectancy Diagram



Lumen Maintenance Diagram - CorePro LEDtube HO 1200mm 18W 865 T8 PH

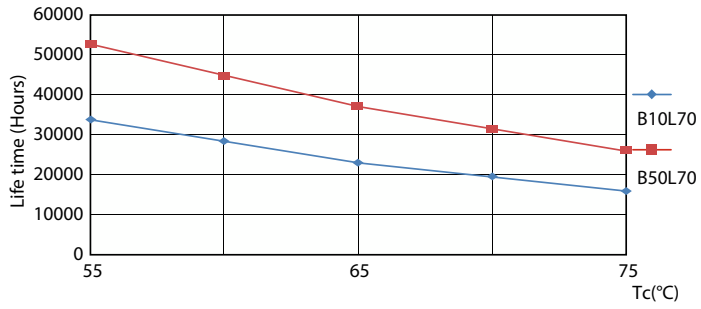
FailureRate



Lumen Maintenance Diagram - CorePro LEDtube HO 1200mm 18W 865 T8 PH

# CorePro LED tube EM/Mains T8

## Lifetime



LifetimeVsTc

