



CorePro LED tube EM/ Mains T8

Corepro LEDtube HO 1200mm 18W840T8 AP

CorePro, LEDtube, T8, EM/Mains, 1200 mm, 220-240 V, 18 W, 36W TL-D, 4000 K, 2100 lm, 50000 hour(s)

The CorePro LEDtube is an affordable LED solution suitable for replacing T8 fluorescent lamps. The product provides a natural lighting effect for use in general lighting applications, as well as instant energy savings – an environmentally friendly solution.

Warnings and Safety

- -
- -

Product data

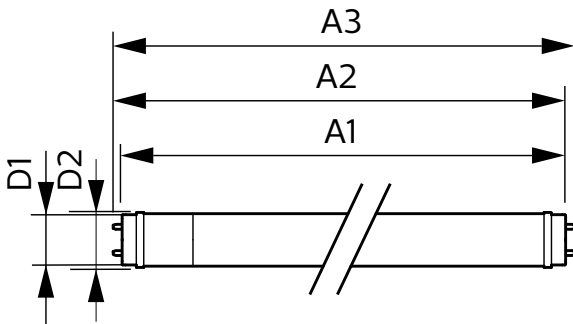
| General Information | | Color Consistency | |
|------------------------------------|--------------------|---------------------------------------|-------------|
| Cap-Base | G13 | Color Consistency | <6 |
| Nominal lifetime | 50,000 hour(s) | Color rendering index (CRI) | 80 |
| Switching Cycle | 200,000 | LLMF At End Of Nominal Lifetime (Nom) | 70 % |
| Lighting Technology | LEDtube | Operating and Electrical | |
| Light Technical | | Line Frequency | 50 to 60 Hz |
| Color Code | 840 [CCT of 4000K] | Input Frequency | 50 to 60 Hz |
| Beam Angle (Nom) | 240 degree(s) | Power Consumption | 18 W |
| Luminous Flux | 2,100 lm | Lamp Current (Max) | 97 mA |
| Color Designation | Cool White (CW) | Lamp Current (Min) | 97 mA |
| Correlated Color Temperature (Nom) | 4000 K | Starting Time (Nom) | 0.5 s |
| Luminous Efficacy (rated) (Nom) | 116.00 lm/W | Warm-up time to 60% light | 0.5 s |
| | | Power Factor (Fraction) | 0.9 |

CorePro LED tube EM/Mains T8

| | |
|---|-----------|
| Voltage (Nom) | 220-240 V |
| LED alternative to fluorescent lamp power | 36W TL-D |
| Ballast Compatibility | EM/Mains |
| Temperature | |
| T-Case Maximum (Nom) | 55 °C |
| Controls and Dimming | |
| Dimmable | No |
| Mechanical and Housing | |
| Bulb Finish | Frosted |
| Bulb Material | Glass |
| Product Length | 1,200 mm |
| Bulb Shape | T8 |
| Net Weight (Piece) | 0.200 kg |
| Approval and Application | |
| Energy Saving Product | Yes |

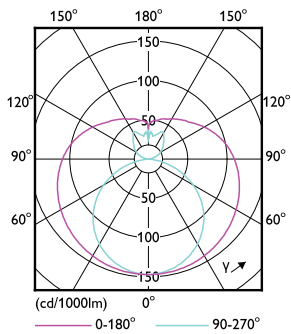
| | |
|---------------------------------|--|
| Approval Marks | RoHS compliance CE marking KEMA Keur certificate |
| EU RoHS compliant | Yes |
| Ambient temperature range | -20 °C to 45 °C |
| Product Data | |
| Order product name | Corepro LEDtube HO 1200mm 18W840T8 AP |
| Full product name | Corepro LEDtube HO 1200mm 18W840T8 AP |
| Full product code | 871951444711000 |
| Order code | 929003520708 |
| Material Nr. (12NC) | 929003520708 |
| Numerator - Quantity Per Pack | 1 |
| EAN/UPC - Product/Case | 8719514447110 |
| Numerator - Packs per outer box | 20 |
| EAN/UPC - Case | 8719514447127 |

Dimensional drawing

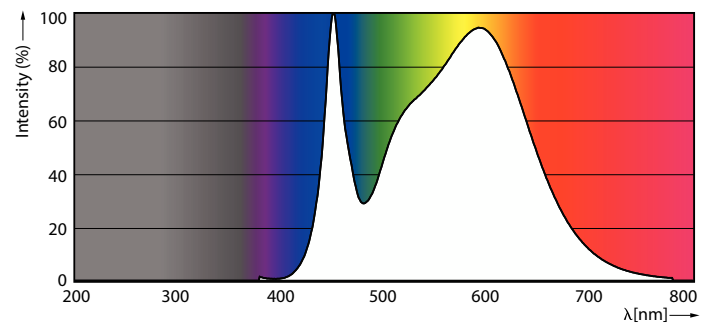


| Product | D1 | D2 | A1 | A2 | A3 |
|---------------------------------------|---------|-------|----------|----------|----------|
| Corepro LEDtube HO 1200mm 18W840T8 AP | 25.7 mm | 28 mm | 1,198 mm | 1,205 mm | 1,212 mm |

Photometric data



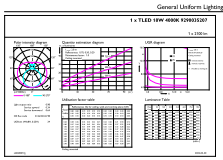
Light Distribution Diagram - Corepro LEDtube HO 1200mm 18W840T8 AP



Spectral Power Distribution Colour - Corepro LEDtube HO 1200mm 18W840T8 AP

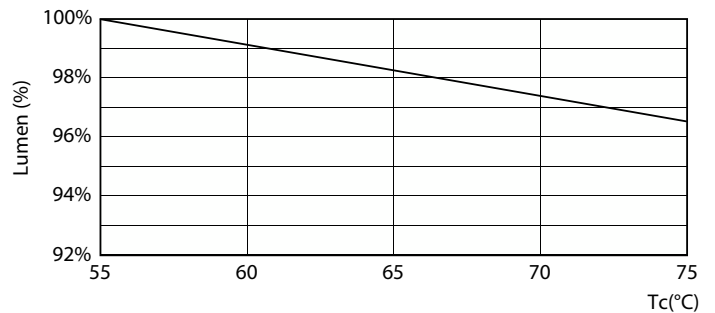
CorePro LED tube EM/Mains T8

Photometric data

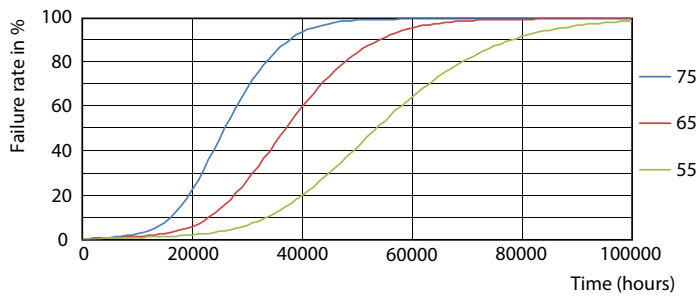


General uniform lighting - Corepro LEDtube HO 1200mm 18W840T8 AP

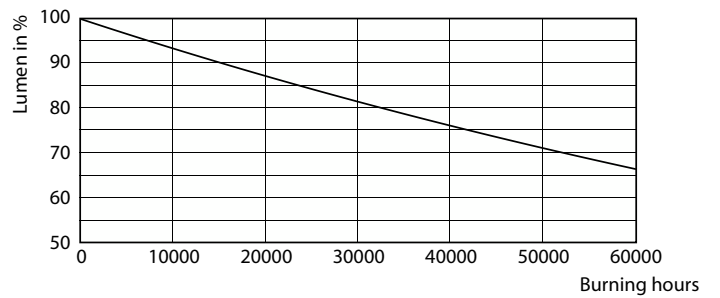
Lifetime



Life Expectancy Diagram



Lumen Maintenance Diagram - Corepro LEDtube HO 1200mm 18W840T8 AP

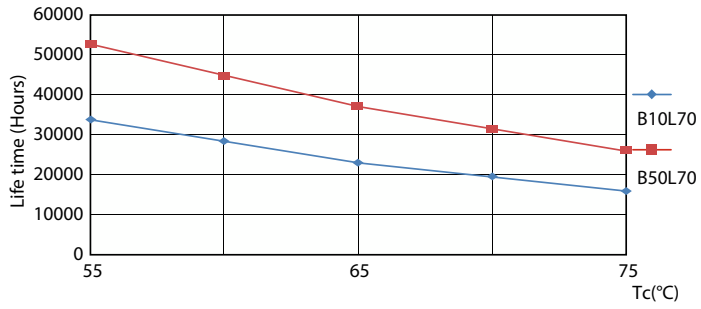


FailureRate

Lumen Maintenance Diagram - Corepro LEDtube HO 1200mm 18W840T8 AP

CorePro LED tube EM/Mains T8

Lifetime



LifetimeVsTc

