



CorePro LED tube EM/ Mains T8

Corepro LEDtube HO 1200mm 18W840T8 AP

CorePro, LEDtube, T8, EM/Mains, 1200 mm, 220-240 V, 18 W, 36W TL-D, 4000 K, 2100 lm, 50000 hour(s)

The CorePro LEDtube is an affordable LED solution suitable for replacing T8 fluorescent lamps. The product provides a natural lighting effect for use in general lighting applications, as well as instant energy savings – an environmentally friendly solution.

Warnings and Safety

- NOTE: The overall energy efficiency and light distribution of any installation that uses these lamps will be determined by the design of the installation.
- Installation must be done according to the installation diagrams provided with the lamp or available online. Installation must be done by a certified professional.

Product data

General Information		Correlated Color Temperature (Nom)	
Cap-Base	G13	Correlated Color Temperature (Nom)	4000 K
Nominal lifetime	50,000 hour(s)	Luminous Efficacy (rated) (Nom)	116.00 lm/W
Switching Cycle	200,000	Color Consistency	<6
Lighting Technology	LEDtube	Color rendering index (CRI)	80
		LLMF At End Of Nominal Lifetime (Nom)	70 %
Light Technical		Operating and Electrical	
Color Code	840 [CCT of 4000K]	Line Frequency	50 to 60 Hz
Beam Angle (Nom)	240 degree(s)	Input Frequency	50 to 60 Hz
Luminous Flux	2,100 lm	Power Consumption	18 W
Color Designation	Cool White (CW)	Lamp Current (Max)	97 mA

CorePro LED tube EM/Mains T8

Lamp Current (Min)	97 mA
Starting Time (Nom)	0.5 s
Warm-up time to 60% light	0.5 s
Power Factor (Fraction)	0.9
Voltage (Nom)	220-240 V
LED alternative to fluorescent lamp power	36W TL-D
Ballast Compatibility	EM/Mains

Temperature

T-Case Maximum (Nom)	55 °C
----------------------	-------

Controls and Dimming

Dimmable	No
----------	----

Mechanical and Housing

Bulb Finish	Frosted
Bulb Material	Glass
Product Length	1,200 mm
Bulb Shape	T8
Net Weight (Piece)	0.200 kg

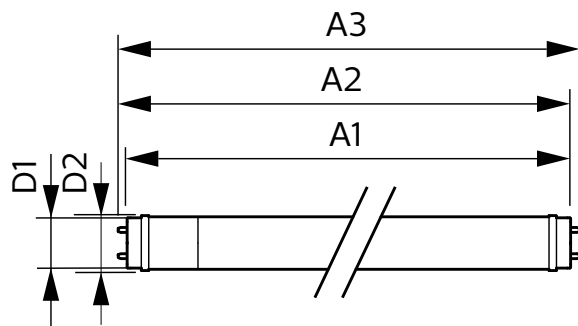
Approval and Application

Energy Saving Product	Yes
Approval Marks	RoHS compliance CE marking KEMA Keur certificate
EU RoHS compliant	Yes
Ambient temperature range	-20 °C to 45 °C

Product Data

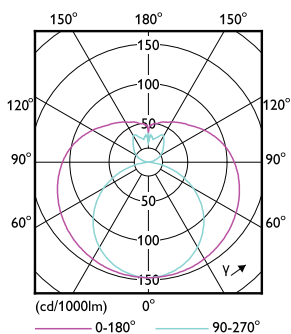
Order product name	Corepro LEDtube HO 1200mm 18W840T8 AP
Full product name	Corepro LEDtube HO 1200mm 18W840T8 AP
Full product code	871951444711000
Order code	929003520708
Material Nr. (12NC)	929003520708
Numerator - Quantity Per Pack	1
EAN/UPC - Product/Case	8719514447110
Numerator - Packs per outer box	20
EAN/UPC - Case	8719514447127

Dimensional drawing

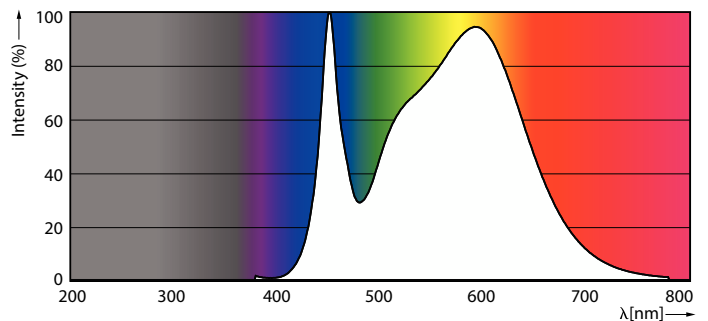


Product	D1	D2	A1	A2	A3
Corepro LEDtube HO 1200mm 18W840T8 AP	25.7 mm	28 mm	1,198 mm	1,205 mm	1,212 mm

Photometric data



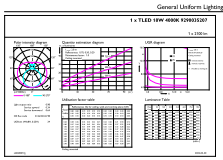
Light Distribution Diagram - Corepro LEDtube HO 1200mm 18W840T8 AP



Spectral Power Distribution Colour - Corepro LEDtube HO 1200mm 18W840T8 AP

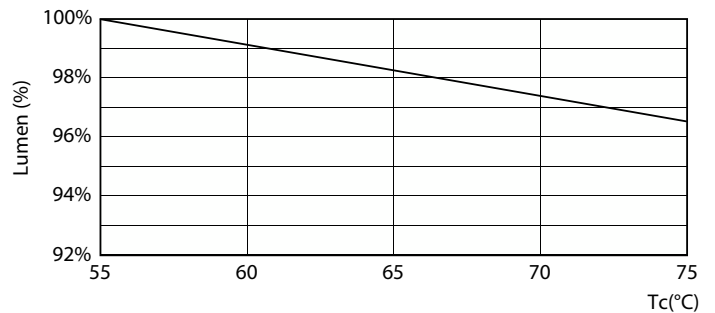
CorePro LED tube EM/Mains T8

Photometric data

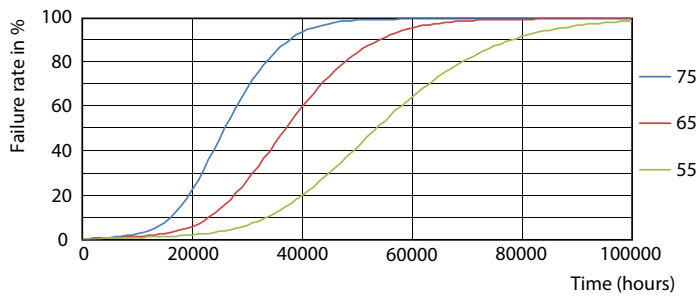


General uniform lighting - Corepro LEDtube HO 1200mm 18W840T8 AP

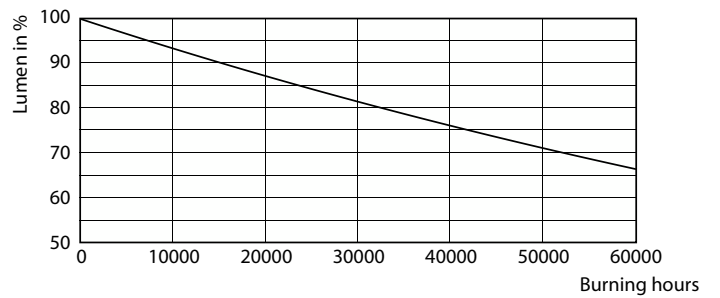
Lifetime



Life Expectancy Diagram



Lumen Maintenance Diagram - Corepro LEDtube HO 1200mm 18W840T8 AP

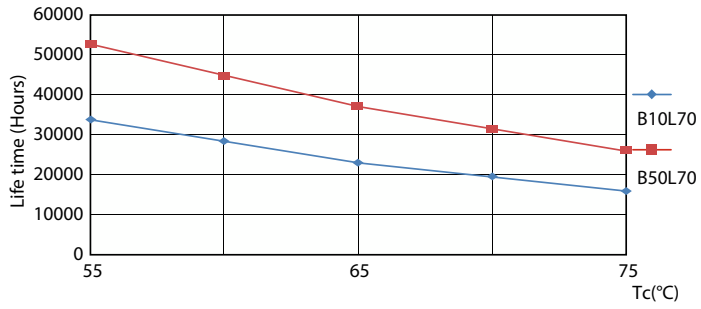


FailureRate

Lumen Maintenance Diagram - Corepro LEDtube HO 1200mm 18W840T8 AP

CorePro LED tube EM/Mains T8

Lifetime



LifetimeVsTc

