



CorePro LED tube EM/ Mains T8

CorePro LEDtube 1200mm 15.5W 865 T8 AP I

CorePro, LEDtube, T8, EM/Mains, 1200 mm, 220-240 V, 15.5 W, 36W TL-D, 6500 K, 1800 lm, 50000 hour(s)

CorePro, LEDtube, T8, EM/Mains, 1200 mm, 220-240 V, 15.5 W, LED alternative to 36W TL-D, 6500 K, 1800 lm, 50000 hour(s), 116 lm/W, G13, Beam angle 240 degree(s), Glass, RGO

Warnings and Safety

- NOTE: The overall energy efficiency and light distribution of any installation that uses these lamps will be determined by the design of the installation.
- Installation must be done according to the installation diagrams provided with the lamp or available online. Installation must be done by a certified professional.

Product data

General Information		Luminous Efficacy (rated) (Nom)	
Cap-Base	G13		116 lm/W
Nominal lifetime	50,000 hour(s)	Color Consistency	<6
Switching Cycle	200,000	Color rendering index (CRI)	80
Lighting Technology	LEDtube	LLMF At End Of Nominal Lifetime (Nom)	70 %
		Photobiological safety according to EN 62471	RGO
Light Technical		Operating and Electrical	
Color Code	865 [CCT of 6500K]	Input Frequency	50 to 60 Hz
Beam Angle (Nom)	240 degree(s)	Power Consumption	15.5 W
Luminous Flux	1,800 lm	Lamp Current (Nom)	84 mA
Color Designation	Cool Daylight	Starting Time (Nom)	0.5 s
Correlated Color Temperature (Nom)	6500 K	Warm-up time to 60% light	0.5 s

CorePro LED tube EM/Mains T8

Power Factor (Fraction)	0.9
Voltage (Nom)	220-240 V
LED alternative to fluorescent lamp power	36W TL-D
Ballast Compatibility	EM/Mains

Temperature

T-Case Maximum (Nom)	60 °C
----------------------	-------

Controls and Dimming

Dimmable	No
----------	----

Mechanical and Housing

Bulb Finish	Frosted
Bulb Material	Glass
Product Length	1,200 mm
Bulb Shape	T8
Net Weight (Piece)	0.220 kg

Approval and Application

Energy Saving Product	Yes
Approval Marks	RoHS compliance KEMA Keur certificate

EU RoHS compliant	Yes
Ambient temperature range	-20 to +45 °C

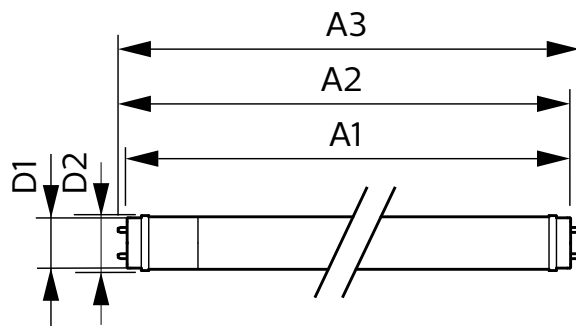
Application Conditions

Wireless Technology	Not applicable
---------------------	----------------

Product Data

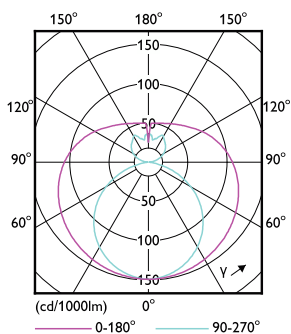
Order product name	CorePro LEDtube 1200mm 15.5W 865 T8 AP I
Full product name	CorePro LEDtube 1200mm 15.5W 865 T8 AP I
Full product code	872016927712000
Order code	929003519808
Material Nr. (12NC)	929003519808
Numerator - Quantity Per Pack	1
EAN/UPC - Product/Case	8720169277120
Numerator - Packs per outer box	20
EAN/UPC - Case	8720169277137

Dimensional drawing

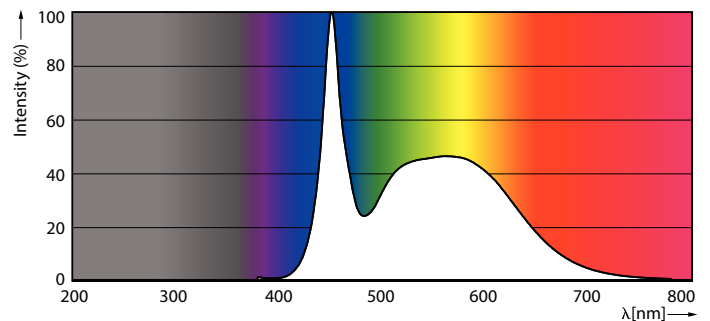


Product	D1	D2	A1	A2	A3
CorePro LEDtube 1200mm 15.5W 865 T8 AP I	28 mm	28 mm	1,198 mm	1,205 mm	1,212 mm

Photometric data



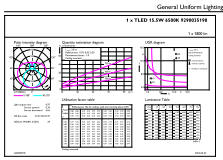
Light Distribution Diagram - CorePro LEDtube 1200mm 15.5W 865 T8 AP I



Spectral Power Distribution Colour - CorePro LEDtube 1200mm 15.5W 865 T8 AP I

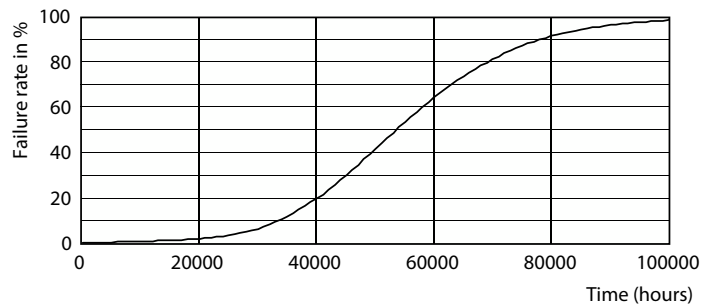
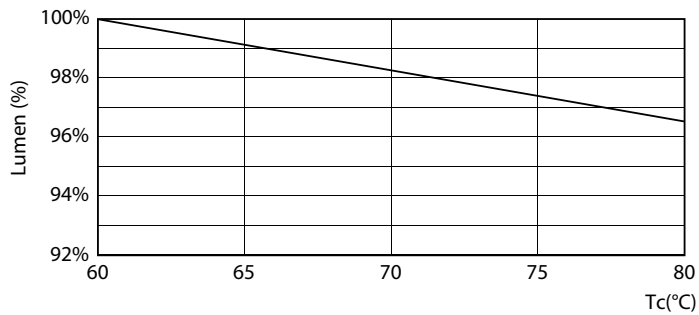
CorePro LED tube EM/Mains T8

Photometric data



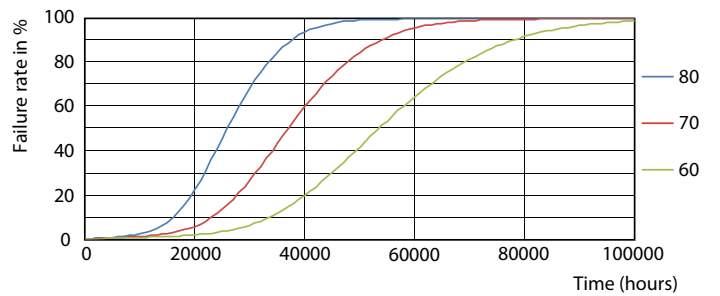
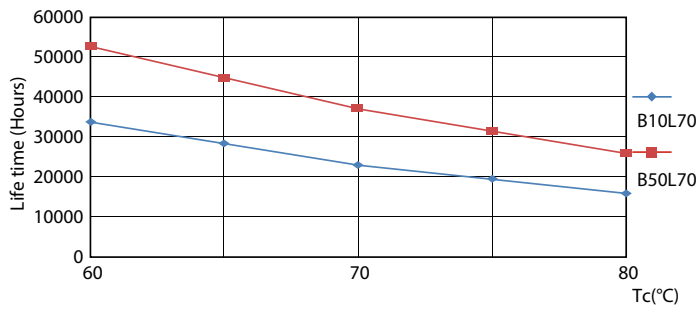
General uniform lighting - CorePro LEDtube 1200mm 15.5W 865 T8 AP I

Lifetime



Lumen Maintenance Diagram - CorePro LEDtube 1200mm 15.5W 865 T8 AP I

Life Expectancy Diagram

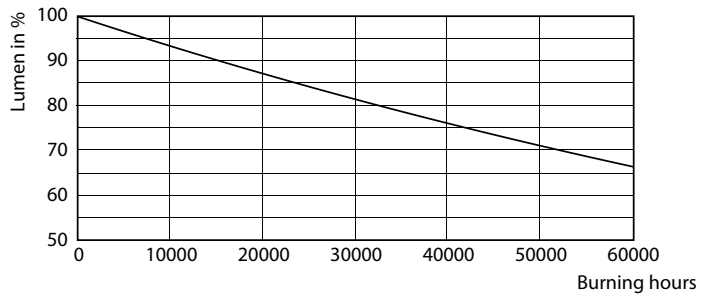


LifetimeVsTc

FailureRate

CorePro LED tube EM/Mains T8

Lifetime



Lumen Maintenance Diagram - CorePro LEDtube 1200mm 15.5W 865 T8 AP I

