



MASTER - LED HID SON-T

MAS LED SON-T EM 8.1Klm 50W 727 E40

MASTER, LED SON-T, Tubular, EM/Mains, 50 W, SON-T 100W, E40, 2700 K, 8100 lm, CRI 70, 70000 hour(s)

Philips MASTER - LED HID SON-T lamps are an easy LED solution with a short payback period to replace High-Intensity Discharge (HID) and High-Pressure Sodium (SON) lamps. MASTER - LED HID SON-T solutions bring the energy efficiency and long lifetime benefits of LED to HID replacement, providing instant savings for a low initial investment. With the right lamp size and light distribution, you can easily retrofit MASTER - LED HID SON-T lamps into existing SON and SON-T systems, enhancing the lighting quality with LED without changing the luminaire's ballast (for IF replacements) or reflector.

Warnings and Safety

- Please refer to the installation guide or consult a Philips Lighting representative for the wiring diagram and instructions.

Product data

General Information			
Cap-Base	E40	Luminous Flux	8,100 lm
Nominal lifetime	70,000 hour(s)	Color Designation	Warm White (WW)
Switching Cycle	50,000	Correlated Color Temperature (Nom)	2700 K
Lighting Technology	LED SON-T	Luminous Efficacy (rated) (Nom)	162 lm/W
Flux measurement reference	Sphere	Color Consistency	<6
Warranty period	8 years	Color rendering index (CRI)	70
		LLMF At End Of Nominal Lifetime (Nom)	70 %
		Photobiological safety according to EN 62471	RG1
Light Technical			
Color Code	727 [CCT of 2700K]		

MASTER - LED HID SON-T

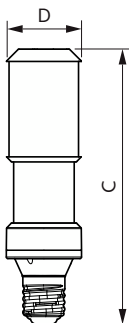
Operating and Electrical	
Line Frequency	50 to 60 Hz
Input Frequency	50 to 60 Hz
Power Consumption	50 W
Lamp Current (Max)	465 mA
Lamp Current (Min)	245 mA
Starting Time (Nom)	0.5 s
Warm-up time to 60% light	0.5 s
Power Factor (Fraction)	0.9
Voltage (Nom)	120-240 V
Inrush current at mains	7.4
Max. lamp no. on MCB B type 10A - Mains	26
Max. lamp no. on MCB B type 10A – EM ballast without Compensation Capacitor.	26
Max. lamp no. on MCB B type 10A – EM ballast with Compensation Capacitor.	5
Max. lamp no. on MCB B type 16A - Mains	41
Max. lamp no. on MCB B type 16A – EM ballast without Compensation Capacitor.	41
Max. lamp no. on MCB B type 16A – EM ballast with Compensation Capacitor.	9
Wattage Equivalent (LED HID only)	SON-T 100W
Ballast Compatibility	EM/Mains

Temperature	
T-Case Maximum (Nom)	52 °C

Controls and Dimming	
Dimmable	No

Mechanical and Housing	
Bulb Finish	Clear
Bulb Material	Glass

Dimensional drawing



Bulb Shape	Tubular
Net Weight (Piece)	0.505 kg

Approval and Application	
Energy Efficiency Class	C
Energy Saving Product	Yes
Energy Consumption kWh/1000 h	50 kWh
EPREL Registration Number	1077793
CE mark	Yes
EU RoHS compliant	Yes
Flickering value (PstLM) - Flickering value as per EN 61000-3-3	1
Stroboscopic effect visibility measure (SVM)	2.5
Ambient temperature range	-30 to +45 °C

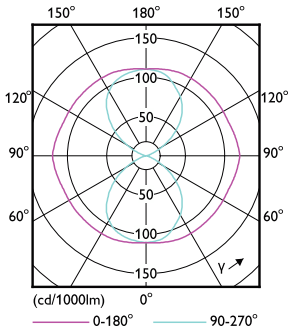
Application Conditions	
Wireless Technology	Not applicable

Product Data	
Order product name	MAS LED SON-T EM 8.1Klm 50W 727 E40
Full product name	MAS LED SON-T EM 8.1Klm 50W 727 E40
Full product code	871951444915200
Order code	44915200
Material Nr. (12NC)	929003468418
Numerator - Quantity Per Pack	1
EAN/UPC - Product/Case	8719514449152
Numerator - Packs per outer box	6
EAN/UPC - Case	8719514449169

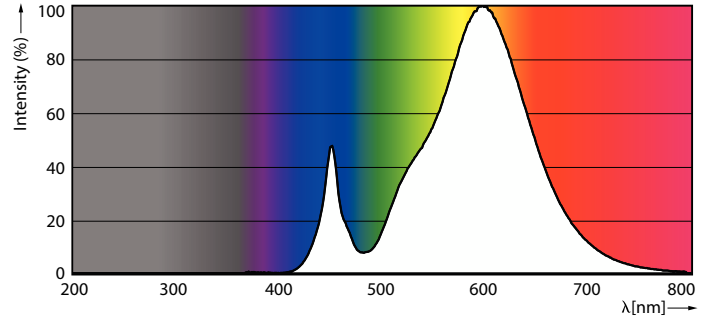
Product	D	C
MAS LED SON-T EM 8.1Klm 50W 727 E40	71 mm	262 mm

MASTER - LED HID SON-T

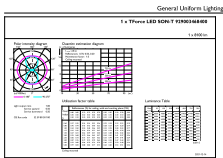
Photometric data



Light Distribution Diagram - MAS LED SON-T EM 8.1Klm 50W 727 E40

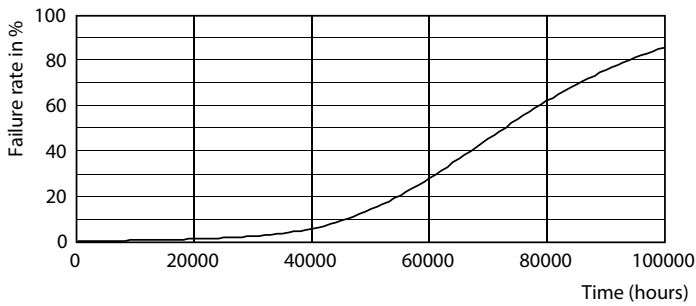


Spectral Power Distribution Colour - MAS LED SON-T EM 8.1Klm 50W 727 E40

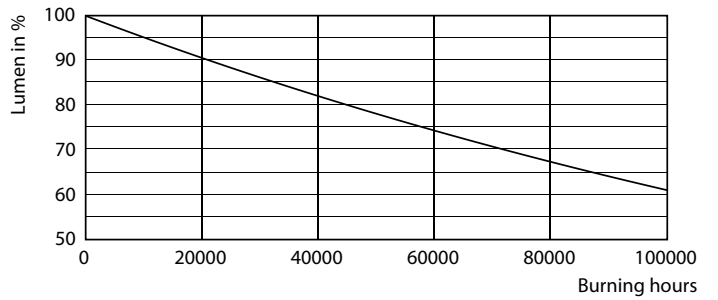


General uniform lighting - MAS LED SON-T EM 8.1Klm 50W 727 E40

Lifetime



Life Expectancy Diagram



Lumen Maintenance Diagram - MAS LED SON-T EM 8.1Klm 50W 727 E40

MASTER - LED HID SON-T

