



MASTER LED tube InstantFit HF T5

Master LEDtube HF 1500mm UO 36W 865 T5

MASTER, LEDtube, T5, HF, 1500 mm, 36 W, 80W TL5 HO, 6500 K, 5600 lm, CRI 80, 60000 hour(s)

The Philips MASTER LEDtube integrates a LED light source into a traditional fluorescent form factor. Its unique design creates a perfectly uniform visual appearance, which cannot be distinguished from traditional fluorescent. These T5 lighting tubes are the right choice for absolute performance and are designed to stand up to everyday conditions. Unparalleled savings thanks to low energy consumption and an exceptionally long lifetime make these T5 LED tubes the choice for every demanding application.

Product data

General Information		Luminous Efficacy (rated) (Nom)	
Cap-Base	G5		155.00 lm/W
Nominal lifetime	60,000 hour(s)	Color Consistency	<6
Switching Cycle	50,000	Color rendering index (CRI)	80
Lighting Technology	LEDtube	LLMF At End Of Nominal Lifetime (Nom)	70 %
Flux measurement reference	Sphere	Photobiological safety according to EN 62471	RG0
Warranty period	5 years		
Light Technical		Operating and Electrical	
Color Code	865 [CCT of 6500K]	Line Frequency	30K to 100K Hz
Beam Angle (Nom)	200 degree(s)	Input Frequency	30K to 100K Hz
Luminous Flux	5,600 lm	Power Consumption	36 W
Color Designation	Cool Daylight	Lamp Current (Max)	850 mA
Correlated Color Temperature (Nom)	6500 K	Lamp Current (Min)	450 mA
		Starting Time (Nom)	0.5 s
		Warm-up time to 60% light	0.5 s

MASTER LED tube InstantFit HF T5

Power Factor (Fraction)	0.9
Voltage (Nom)	55-85 V
LED alternative to fluorescent lamp power	80W TL5 HO
Inrush current at mains	-
Max. lamp no. on MCB B type 10A – Mains	-
Max. lamp no. on MCB B type 10A – EM ballast without Compensation Capacitor.	-
Max. lamp no. on MCB B type 10A – EM ballast with Compensation Capacitor.	-
Max. lamp no. on MCB B type 16A – Mains	-
Max. lamp no. on MCB B type 16A – EM ballast without Compensation Capacitor.	-
Max. lamp no. on MCB B type 16A – EM ballast with Compensation Capacitor.	-
Ballast Compatibility	HF

Temperature

T-Case Maximum (Nom)	75 °C
----------------------	-------

Controls and Dimming

Dimmable	Yes - Check ballast compatibility
----------	-----------------------------------

Mechanical and Housing

Bulb Finish	Frosted
Bulb Material	Glass
Product Length	1,500 mm
Bulb Shape	T5
Net Weight (Piece)	0.170 kg

Approval and Application

Energy Efficiency Class	D
Energy Saving Product	Yes
Approval Marks	RoHS compliance KEMA Keur certificate
Energy Consumption kWh/1000 h	36 kWh
EPREL Registration Number	989224
CE mark	Yes
EU RoHS compliant	Yes
Ambient temperature range	-20 °C to 45 °C

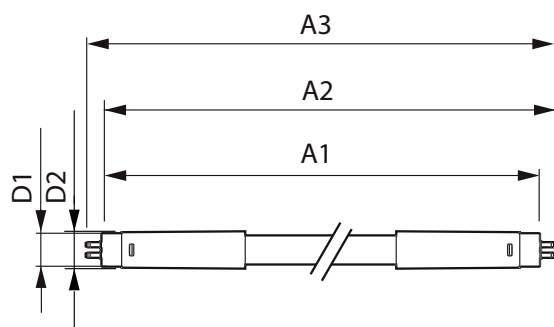
Application Conditions

Wireless Technology	Not applicable
---------------------	----------------

Product Data

Order product name	MAS LEDtube HF 1500mm UO 36W 865 T5
Full product name	Master LEDtube HF 1500mm UO 36W 865 T5
Full product code	871951441909400
Order code	41909400
Material Nr. (12NC)	929003154102
Numerator - Quantity Per Pack	1
EAN/UPC - Product/Case	8719514419094
Numerator - Packs per outer box	10
EAN/UPC - Case	8719514419100

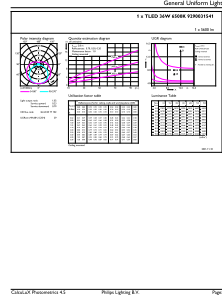
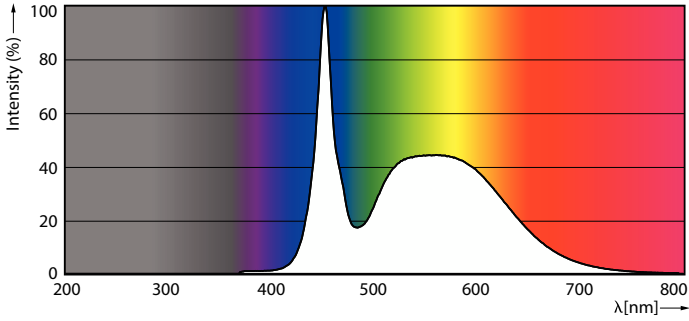
Dimensional drawing



Product	D1	D2	A1	A2	A3
MAS LEDtube HF 1500mm UO 36W 865 T5	15.5 mm	19 mm	1,449 mm	1,456 mm	1,463 mm

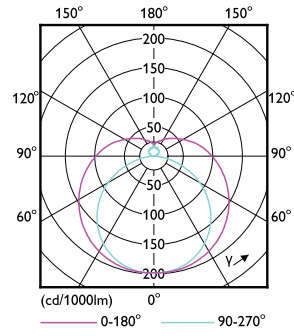
MASTER LED tube InstantFit HF T5

Photometric data



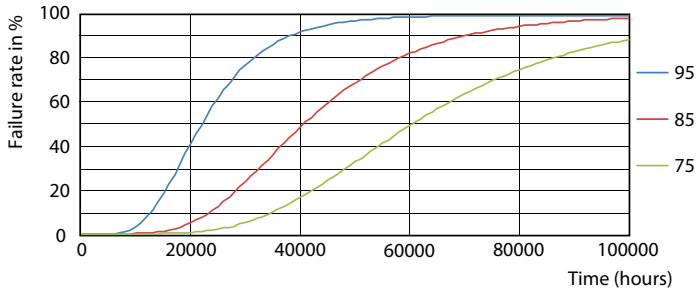
Spectral Power Distribution Colour - MAS LEDtube HF 1500mm UO 36W 865 T5

General uniform lighting - MAS LEDtube HF 1500mm UO 36W 865 T5

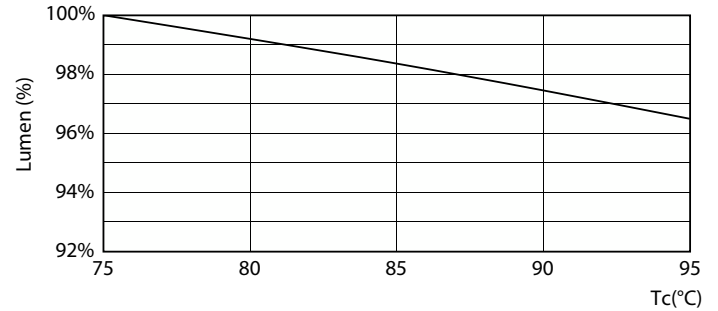


Light Distribution Diagram - MAS LEDtube HF 1500mm UO 36W 865 T5

Lifetime



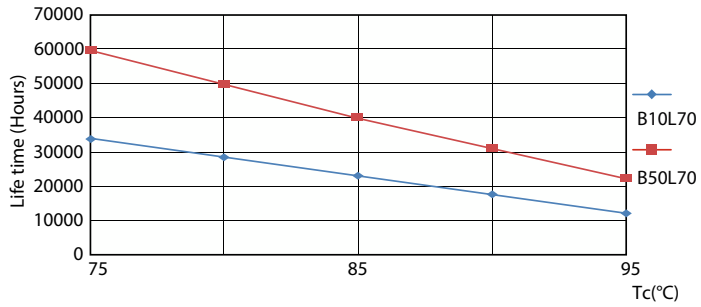
LEDtube 60K 7595 FailureRate-LED



Lumen Maintenance Diagram - MAS LEDtube HF 1500mm UO 36W 865 T5

MASTER LED tube InstantFit HF T5

Lifetime



LEDtube 60K 7595 LifetimeVsTc-LED

Lumen Maintenance Diagram - MAS LEDtube HF 1500mm UO 36W 865 T5



Life Expectancy Diagram

