



MainsFit (UL Type-B) T5

25T5HO/COR/46-835/MF33/G 25/1

CorePro, LEDtube, T5, 1200 mm, 25 W, 3500 K, 3300 lm, 50000 hour(s)

The MainsFit (UL Type-B) lamps are designed to be the perfect retrofit solution to move from traditional fluorescent lamps to energy saving LEDs. This ballast bypass lamp has everything needed built into the lamp with proven energy savings, long life, surge suppression and industry leading safety features. All lamps in the MainsFit family are double-ended to help simplify the installation. In addition, all lamps meet the Philips standards for light quality so that end users will be in a comfortable environment regardless of the MainsFit lamp type.

Product data

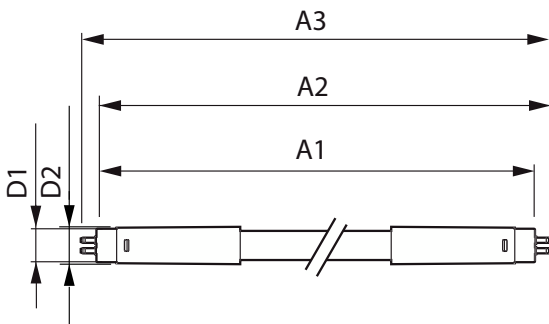
General Information		Color rendering index (CRI)		80
Cap-Base	G5	LLMF At End Of Nominal Lifetime (Nom)		70 %
Nominal lifetime	50,000 hour(s)	Operating and Electrical		
Switching Cycle	50,000	Line Frequency	50 to 60 Hz	
Lighting Technology	LEDtube	Input Frequency	50 to 60 Hz	
Light Technical		Power Consumption	25 W	
Color Code	835 [CCT of 3500K]	Lamp Current (Max)	250 mA	
Beam Angle (Nom)	200 degree(s)	Lamp Current (Min)	95 mA	
Luminous Flux	3,300 lm	Wattage Equivalent	54 W	
Color Designation	White (WH)	Starting Time (Nom)	0.5 s	
Correlated Color Temperature (Nom)	3500 K	Warm-up time to 60% light	0.5 s	
Luminous Efficacy (rated) (Nom)	132.00 lm/W	Power Factor (Fraction)	0.9	
Color Consistency	<6	Voltage (Nom)	120-277 V	

MainsFit (UL Type-B) T5

UL Type	UL Type B
Temperature	
T-Case Maximum (Nom)	75 °C
Controls and Dimming	
Dimmable	Limited
Mechanical and Housing	
Bulb Finish	Frosted
Bulb Material	Glass
Product Length	1,200 mm
Bulb Shape	T5
Net Weight (Piece)	0.151 kg
Approval and Application	
Energy Saving Product	Yes
Approval Marks	RoHS compliance UL certificate DLC compliance

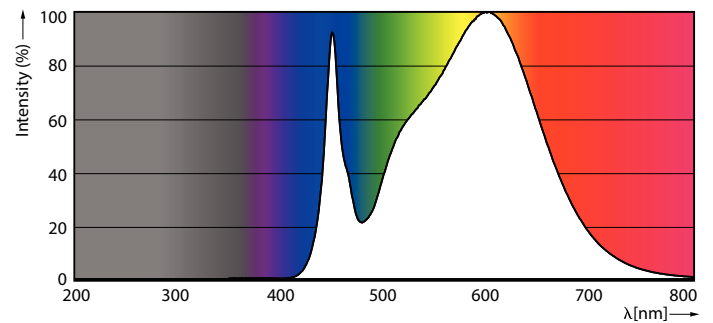
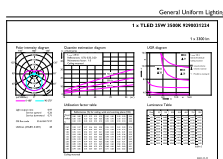
EU RoHS compliant	Yes
Ambient temperature range	-20 °C to 45 °C
Application Conditions	
can it be used in closed luminaires	Yes
Product Data	
Order product name	25T5HO/COR/46-835/MF33/G 25/1
Full product name	25T5HO/COR/46-835/MF33/G 25/1
Order code	929003122404
Material Nr. (12NC)	929003122404
Numerator - Quantity Per Pack	1
EAN/UPC - Product/Case	046677576233
Numerator - Packs per outer box	25
EAN/UPC - Case	50046677576238

Dimensional drawing



Product	D1	D2	A1	A2	A3
25T5HO/COR/46-835/MF33/G 25/1	15.3 mm	18.2 mm	1,149 mm	1,154.9 mm	1,163.2 mm

Photometric data

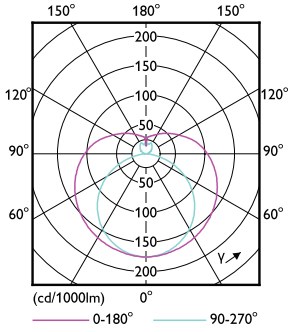


General uniform lighting - 25T5HO/COR/46-835/MF33/G 25/1

Spectral Power Distribution Colour - 25T5HO/COR/46-835/MF33/G 25/1

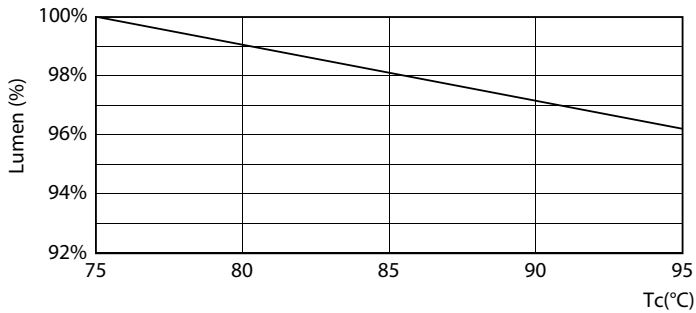
MainsFit (UL Type-B) T5

Photometric data

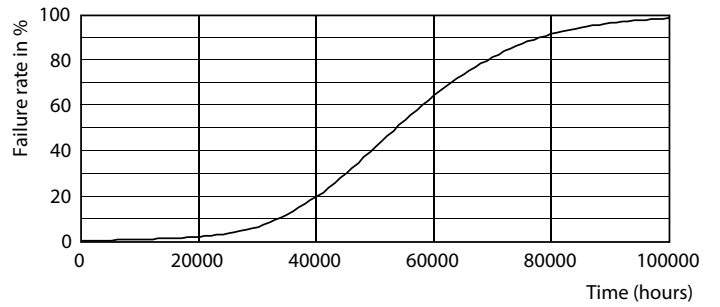


Light Distribution Diagram - 25T5HO/COR/46-835/MF33/G 25/1

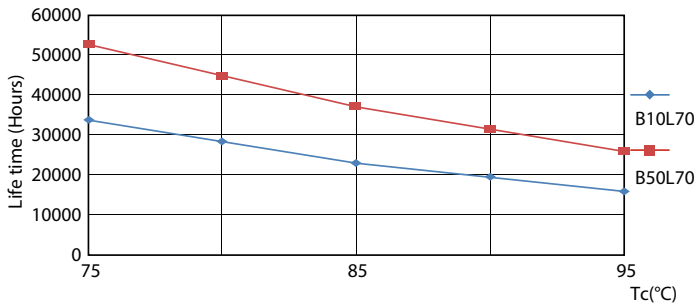
Lifetime



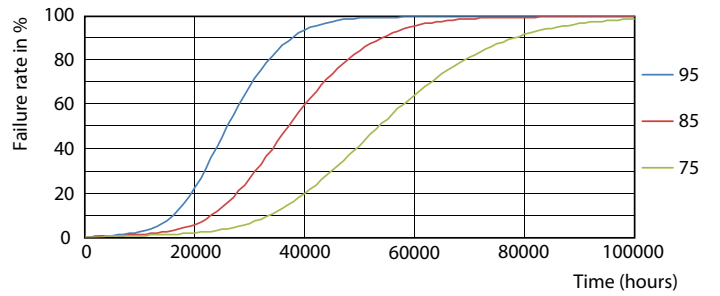
Lumen Maintenance Diagram - 25T5HO/COR/46-835/MF33/G 25/1



Life Expectancy Diagram



LEDtube 50K 7595 LifetimeVsTc-LED



LEDtube 50K 7595 FailureRate-LED

MainsFit (UL Type-B) T5

