



Specialty LED tube

Sensor LEDtube 1200mm 16W 840 T8

LEDtube, T8, 1200 mm, 16 W, 4000 K, 1800 lm, 30000 hour(s)

Philips specialty LEDtube integrates a LED light source into a traditional fluorescent form factor. This product is the ideal solution for relamping to serve multi-purpose usage: it meets general lighting requirements, offers significant energy savings, and special function such as Visible Light Communication.

Product data

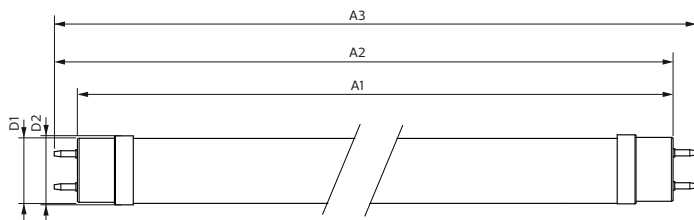
General Information		Power Consumption	
Cap-Base	G13	Power Consumption	16 W
Nominal lifetime	30,000 hour(s)	Lamp Current (Max)	80 mA
Switching Cycle	50,000	Lamp Current (Min)	80 mA
Lighting Technology	LEDtube	Starting Time (Nom)	0.5 s
Light Technical		Warm-up time to 60% light	0.5 s
Color Code	840 [CCT of 4000K]	Power Factor (Fraction)	0.9
Beam Angle (Nom)	240 degree(s)	Voltage (Nom)	220-240 V
Luminous Flux	1,800 lm	Temperature	
Color Designation	Cool White (CW)	T-Case Maximum (Nom)	50 °C
Correlated Color Temperature (Nom)	4000 K	Controls and Dimming	
Luminous Efficacy (rated) (Nom)	112 lm/W	Dimmable	Only with specific dimmers
Color Consistency	<6	Mechanical and Housing	
Color rendering index (CRI)	80	Bulb Finish	Frosted
LLMF At End Of Nominal Lifetime (Nom)	70 %	Bulb Material	Glass
Operating and Electrical		Product Length	1,200 mm
Line Frequency	50 to 60 Hz	Bulb Shape	T8
Input Frequency	50 to 60 Hz		

Specialty LED tube

Net Weight (Piece)	0.200 kg
Approval and Application	
Energy Saving Product	Yes
Approval Marks	RoHS compliance KEMA Keur certificate
EU RoHS compliant	Yes
Ambient temperature range	-20 °C to 45 °C
Product Data	
Order product name	Sensor LEDtube 1200mm 16W 840 T8

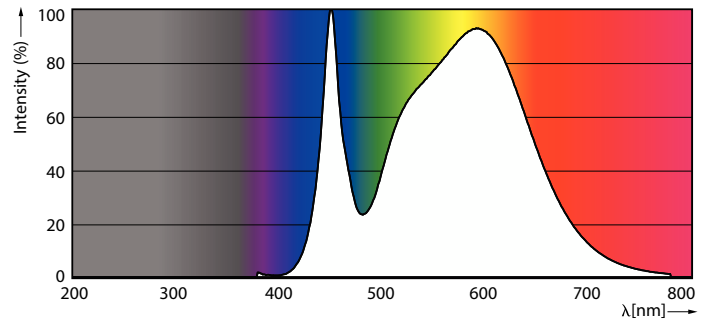
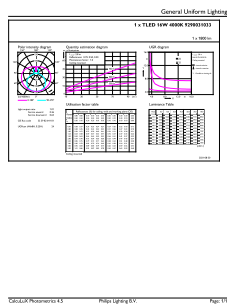
Full product name	Sensor LEDtube 1200mm 16W 840 T8
Full product code	692234194465900
Order code	929003103310
Material Nr. (12NC)	929003103310
Numerator - Quantity Per Pack	1
EAN/UPC - Product/Case	6922341944659
Numerator - Packs per outer box	10
EAN/UPC - Case	6922341944666

Dimensional drawing



Product	D1	D2	A1	A2	A3
Sensor LEDtube 1200mm 16W 840 T8	25.7 mm	28 mm	1,198.2 mm	1,205.3 mm	1,212.4 mm

Photometric data

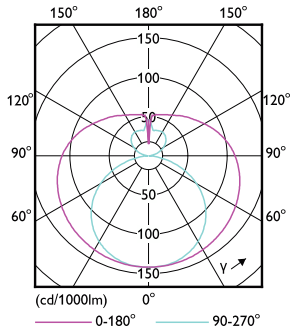


General uniform lighting - Sensor LEDtube 1200mm 16W 840 T8

Spectral Power Distribution Colour - Sensor LEDtube 1200mm 16W 840 T8

Specialty LED tube

Photometric data

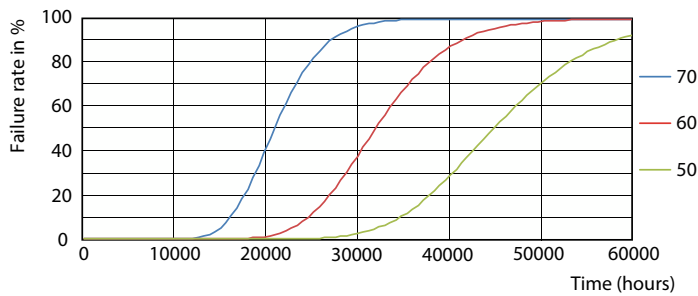


Light Distribution Diagram - Sensor LEDtube 1200mm 16W 840 T8

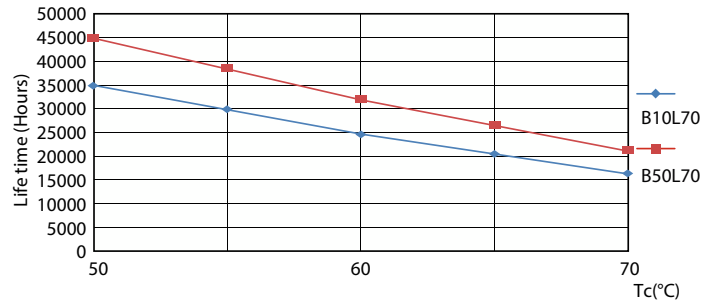
Lifetime



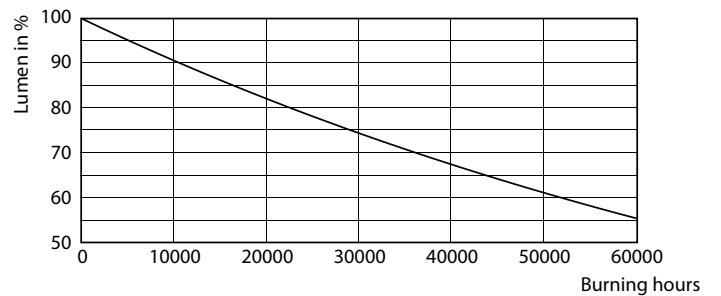
Life Expectancy Diagram



FailureRate



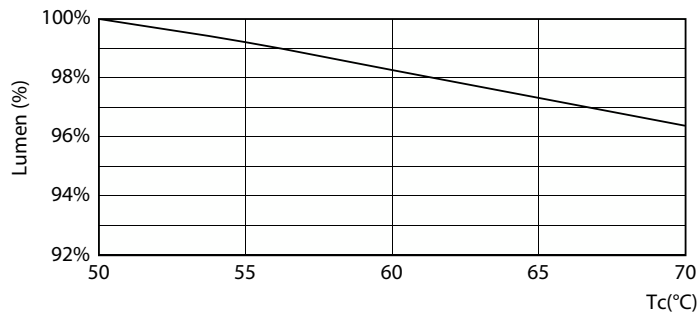
LifetimeVsTc



Lumen Maintenance Diagram - Sensor LEDtube 1200mm 16W 840 T8

Specialty LED tube

Lifetime



Lumen Maintenance Diagram - Sensor LEDtube 1200mm 16W 840 T8

