



# MASTER LED tube Mains T5

## MAS LEDtube 1200mm HE 16.5W 840 T5 EU

MASTER, LEDtube, T5, Mains, 1200 mm, 16.5 W, 28W TL5 HE, 4000 K, 2500 lm, CRI 80, 60000 hour(s)

The new Philips Master LEDtube Mains T5 brings simplicity to your lighting project. You don't need to pay attention to the driver technology anymore. Thanks to a unique design, Philips MASTER LEDtube Mains T5 installs in luminaires operating on mains power connection. So simple to operate! . Perfectly safe, reliable & easy to install, the Philips MASTER LEDtube Mains T5 is the ideal alternative to standard fluorescent tubes to maximise value over lifetime with high energy savings and lower maintenance costs.

### Product data

General Information		Luminous Efficacy (rated) (Nom)		151 lm/W
Cap-Base	G5	Color Consistency	<6	
Nominal lifetime	60,000 hour(s)	Color rendering index (CRI)	80	
Switching Cycle	200,000	LLMF At End Of Nominal Lifetime (Nom)	70 %	
Lighting Technology	LEDtube	Photobiological safety according to EN 62471	RG0	
Flux measurement reference	Sphere			
Warranty period	5 years			
Light Technical		Operating and Electrical		
Color Code	840 [CCT of 4000K]	Line Frequency	50 to 60 Hz	
Beam Angle (Nom)	200 degree(s)	Input Frequency	50 to 60 Hz	
Luminous Flux	2,500 lm	Power Consumption	16.5 W	
Color Designation	Cool White (CW)	Lamp Current (Nom)	85 mA	
Correlated Color Temperature (Nom)	4000 K	Starting Time (Nom)	0.5 s	
		Warm-up time to 60% light	0.5 s	
		Power Factor (Fraction)	0.9	

# MASTER LED tube Mains T5

Voltage (Nom)	220-240 V
LED alternative to fluorescent lamp power	28W TL5 HE
Inrush current at mains	7
Max. lamp no. on MCB B type 10A – Mains	76
Max. lamp no. on MCB B type 10A – EM ballast without Compensation Capacitor.	-
Max. lamp no. on MCB B type 10A – EM ballast with Compensation Capacitor.	-
Max. lamp no. on MCB B type 16A – Mains	121
Max. lamp no. on MCB B type 16A – EM ballast without Compensation Capacitor.	-
Max. lamp no. on MCB B type 16A – EM ballast with Compensation Capacitor.	-
Ballast Compatibility	Mains

## Temperature

T-Case Maximum (Nom)	55 °C
----------------------	-------

## Controls and Dimming

Dimmable	No
----------	----

## Mechanical and Housing

Bulb Finish	Frosted
Bulb Material	Glass
Product Length	1,200 mm
Bulb Shape	T5
Net Weight (Piece)	0.215 kg

## Approval and Application

Energy Efficiency Class	D
-------------------------	---

Energy Saving Product	Yes
Approval Marks	RoHS compliance CE marking KEMA Keur certificate
Energy Consumption kWh/1000 h	17 kWh
EPREL Registration Number	1476407
CE mark	Yes
EU RoHS compliant	Yes
Flickering value (PstLM) - Flickering value as per EN 61000-3-3	1
Stroboscopic effect visibility measure (SVM)	0.4
Ambient temperature range	-20 to +45 °C

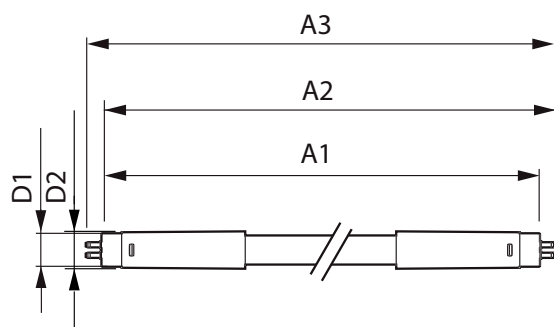
## Application Conditions

Wireless Technology	Not applicable
---------------------	----------------

## Product Data

Order product name	MAS LEDtube 1200mm HE 16.5W 840 T5 EU
Full product name	MAS LEDtube 1200mm HE 16.5W 840 T5 EU
Full product code	871951433433500
Order code	929003044502
Material Nr. (12NC)	929003044502
Numerator - Quantity Per Pack	1
EAN/UPC - Product/Case	8719514334335
Numerator - Packs per outer box	10
EAN/UPC - Case	8719514334342

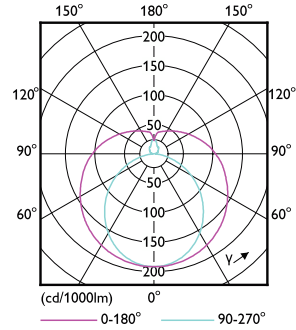
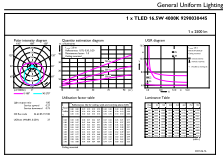
## Dimensional drawing



Product	D1	D2	A1	A2	A3
MAS LEDtube 1200mm HE 16.5W 840 T5 EU	15.7 mm	19 mm	1,149 mm	1,156.1 mm	1,163.2 mm

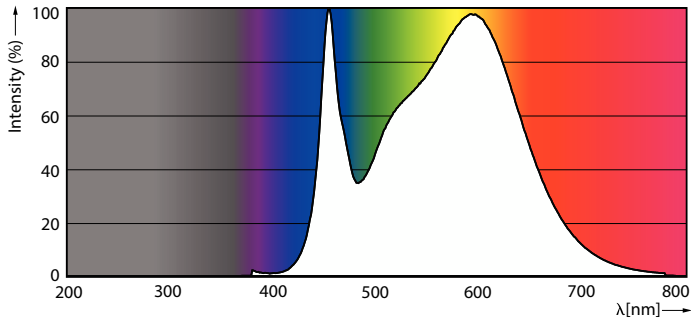
# MASTER LED tube Mains T5

## Photometric data



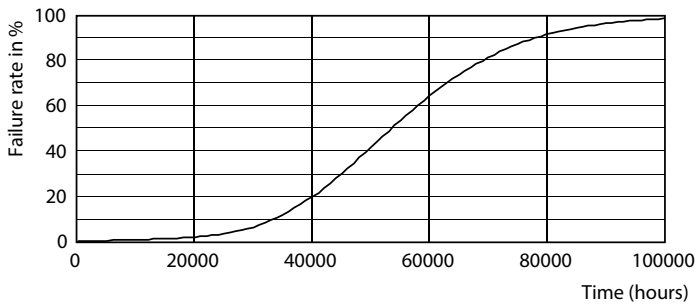
General uniform lighting - MAS LEDtube 1200mm HE 16.5W 840 T5 EU

Light Distribution Diagram - MAS LEDtube 1200mm HE 16.5W 840 T5 EU

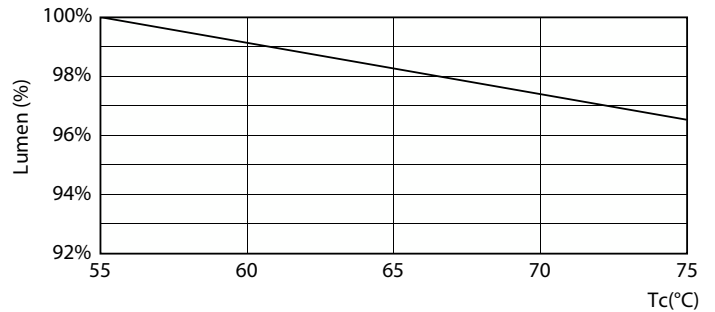


Spectral Power Distribution Colour - MAS LEDtube 1200mm HE 16.5W 840 T5 EU

## Lifetime



Life Expectancy Diagram



Lumen Maintenance Diagram - MAS LEDtube 1200mm HE 16.5W 840 T5 EU

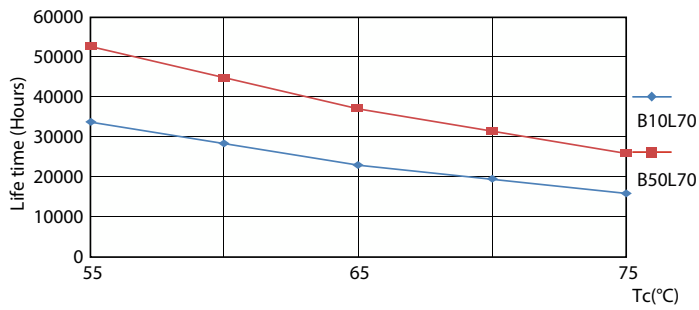
# MASTER LED tube Mains T5

## Lifetime



FailureRate

Lumen Maintenance Diagram - MAS LEDtube 1200mm HE 16.5W 840 T5 EU



LifetimeVsTc

