

# CorePro LED tube EM/ Mains T8

## CorePro LEDtube 1800mm 21W 840 T8

CorePro, LEDtube, T8, EM/Mains, 1800 mm, 21 W, 70W TL-D, 4000 K, 3100 lm, CRI 80, 50000 hour(s)

The CorePro LEDtube is an affordable LED solution suitable for replacing T8 fluorescent lamps. The product provides a natural lighting effect for use in general lighting applications, as well as instant energy savings – an environmentally friendly solution.

### Warnings and Safety

• -

### Product data

General Information		Color Consistency	
Cap-Base	G13	Color rendering index (CRI)	80
Nominal lifetime	50,000 hour(s)	LLMF At End Of Nominal Lifetime (Nom)	70 %
Switching Cycle	200,000	Photobiological safety according to EN 62471	RG0
Lighting Technology	LEDtube	Operating and Electrical	
Flux measurement reference	Sphere	Line Frequency	50 to 60 Hz
Light Technical		Input Frequency	50 to 60 Hz
Color Code	840 [CCT of 4000K]	Power Consumption	21 W
Beam Angle (Nom)	160 degree(s)	Lamp Current (Max)	106 mA
Luminous Flux	3,100 lm	Lamp Current (Min)	87 mA
Color Designation	Cool White (CW)	Starting Time (Nom)	0.5 s
Correlated Color Temperature (Nom)	4000 K	Warm-up time to 60% light	0.5 s
Luminous Efficacy (rated) (Nom)	147 lm/W	Power Factor (Fraction)	0.9

# CorePro LED tube EM/Mains T8

Voltage (Nom)	220-240 V
LED alternative to fluorescent lamp power	70W TL-D
Inrush current at mains	8.2
Max. lamp no. on MCB B type 10A – Mains	65
Max. lamp no. on MCB B type 10A – EM ballast without Compensation Capacitor.	65
Max. lamp no. on MCB B type 10A – EM ballast with Compensation Capacitor.	10
Max. lamp no. on MCB B type 16A – Mains	100
Max. lamp no. on MCB B type 16A – EM ballast without Compensation Capacitor.	100
Max. lamp no. on MCB B type 16A – EM ballast with Compensation Capacitor.	16
Ballast Compatibility	EM/Mains

## Temperature

T-Case Maximum (Nom)	60 °C
----------------------	-------

## Controls and Dimming

Dimmable	No
----------	----

## Mechanical and Housing

Bulb Finish	Frosted
Bulb Material	Plastic
Product Length	1,800 mm
Bulb Shape	T8
Net Weight (Piece)	0.220 kg

## Approval and Application

Energy Efficiency Class	D
-------------------------	---

Energy Saving Product	Yes
Approval Marks	RoHS compliance KEMA Keur certificate
Energy Consumption kWh/1000 h	21 kWh
EPREL Registration Number	1323044
EU RoHS compliant	Yes
Flickering value (PstLM) – Flickering value as per EN 61000-3-3	1
Stroboscopic effect visibility measure (SVM)	0.4
Ambient temperature range	-20 °C to 45 °C

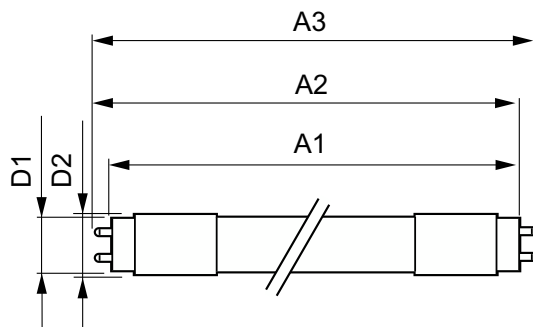
## Application Conditions

Wireless Technology	Not applicable
---------------------	----------------

## Product Data

Order product name	CorePro LEDtube 1800mm 21W 840 T8
Full product name	CorePro LEDtube 1800mm 21W 840 T8
Full product code	871951431692800
Order code	929002998802
Material Nr. (12NC)	929002998802
Numerator - Quantity Per Pack	1
EAN/UPC - Product/Case	8719514316928
Numerator - Packs per outer box	10
EAN/UPC - Case	8719514316935

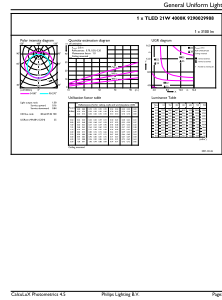
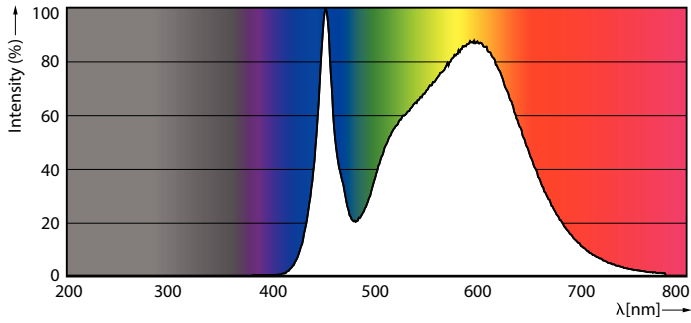
## Dimensional drawing



Product	D1	D2	A1	A2	A3
CorePro LEDtube 1800mm 21W 840 T8	25.8 mm	28 mm	1,762.6 mm	1,769.7 mm	1,776.8 mm

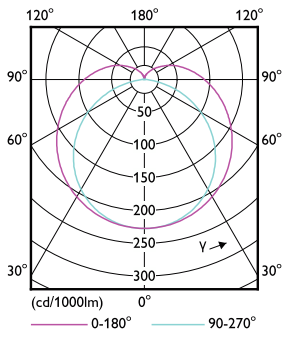
# CorePro LED tube EM/Mains T8

## Photometric data



Spectral Power Distribution Colour - CorePro LEDtube 1800mm 21W 840 T8

General uniform lighting - CorePro LEDtube 1800mm 21W 840 T8

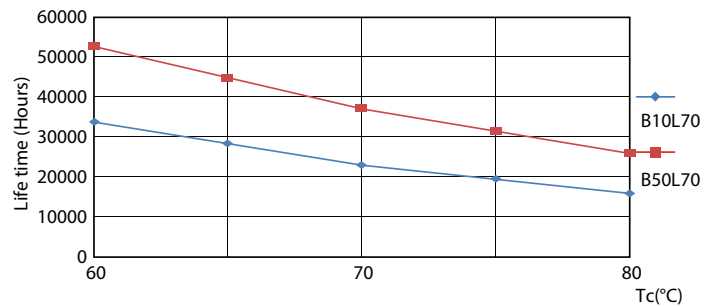


Light Distribution Diagram - CorePro LEDtube 1800mm 21W 840 T8

## Lifetime



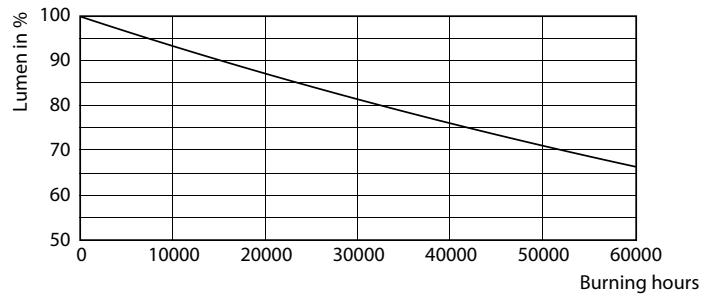
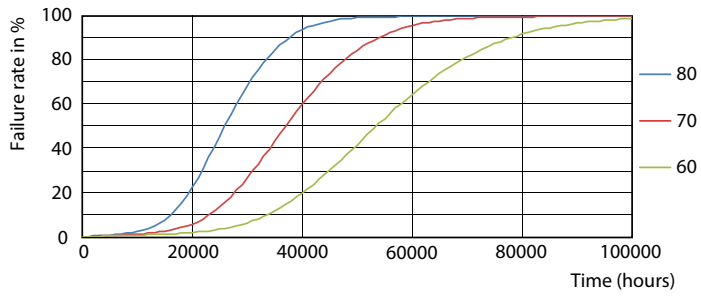
Life Expectancy Diagram



LifetimeVsTc

# CorePro LED tube EM/Mains T8

## Lifetime



FailureRate

Lumen Maintenance Diagram - CorePro LEDtube 1800mm 21W 840 T8

