



MASTER Value LED tube Universal T8



MAS LEDtube VLE UN 1500mm UO 23W830 T8

MASTER Value, LEDtube, T8, Universal, 1500 mm, 23 W, 58W TL-D, 3000 K, 3400 lm, CRI 80, 60000 hour(s)

The new Philips MASTER Value LEDtube Universal T8 brings ease and simplicity to your lighting project. That's because you do not need to match the driver technology anymore: a unique design enables the Philips MASTER Value LEDtube Universal T8 to directly fit in luminaires operating on either electromagnetic ballasts or HF electronic ballasts or mains power connection. It is so simple to operate and you no longer need to stock two types of tubes! Perfectly safe, reliable & easy to install Philips MASTER Value LEDtube Universal T8 is the ideal alternative to standard fluorescent tubes to maximize value over lifetime with high energy saving and lower maintenance costs.

Product data

General Information		Operating and Electrical	
Cap-Base	G13	Line Frequency	50 to 60 Hz
Nominal lifetime	60,000 hour(s)	Input Frequency	50 to 60 Hz
Switching Cycle	50,000	Power Consumption	23 W
Lighting Technology	LEDtube	Lamp Current (Nom)	106 mA
Flux measurement reference	Sphere	Correlated Color Temperature (Nom)	3000 K
Light Technical		Luminous Efficacy (rated) (Nom)	147 lm/W
Color Code	830 [CCT of 3000K]	Color Consistency	<6
Beam Angle (Nom)	190 degree(s)	Color rendering index (CRI)	80
Luminous Flux	3,400 lm	LLMF At End Of Nominal Lifetime (Nom)	70 %
Color Designation	White (WH)	Photobiological safety according to EN 62471	RG0

MASTER Value LED tube Universal T8

Starting Time (Nom)	0.5 s
Warm-up time to 60% light	0.5 s
Power Factor (Fraction)	0.9
Voltage (Nom)	220-240 V
LED alternative to fluorescent lamp power	58W TL-D
Inrush current at mains	10
Max. lamp no. on MCB B type 10A - Mains	73
Max. lamp no. on MCB B type 10A – EM ballast without Compensation Capacitor.	73
Max. lamp no. on MCB B type 10A – EM ballast with Compensation Capacitor.	15
Max. lamp no. on MCB B type 16A - Mains	116
Max. lamp no. on MCB B type 16A – EM ballast without Compensation Capacitor.	116
Max. lamp no. on MCB B type 16A – EM ballast with Compensation Capacitor.	25
Ballast Compatibility	Universal

Temperature

T-Case Maximum (Nom)	55 °C
----------------------	-------

Controls and Dimming

Dimmable	No
----------	----

Mechanical and Housing

Bulb Finish	Frosted
Bulb Material	Glass
Product Length	1,500 mm
Bulb Shape	T8
Net Weight (Piece)	0.290 kg

Approval and Application

Energy Efficiency Class	D
Energy Saving Product	Yes
Approval Marks	RoHS compliance
Energy Consumption kWh/1000 h	23 kWh
EPREL Registration Number	2302856
CE mark	Yes
EU RoHS compliant	Yes
Flickering value (PstLM) - Flickering value as per EN 61000-3-3	1
Stroboscopic effect visibility measure (SVM)	0.4
Ambient temperature range	-20 to +45 °C

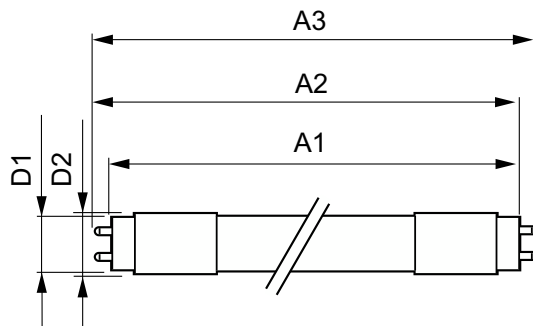
Application Conditions

Wireless Technology	Not applicable
---------------------	----------------

Product Data

Order product name	MAS LEDtube VLE UN 1500mm UO 23W830 T8
Full product name	MAS LEDtube VLE UN 1500mm UO 23W830 T8
Full product code	871951431674400
Order code	929002997302
Material Nr. (12NC)	929002997302
Numerator - Quantity Per Pack	1
EAN/UPC - Product/Case	8719514316744
Numerator - Packs per outer box	10
EAN/UPC - Case	8719514316751

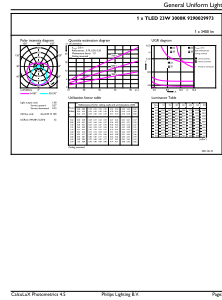
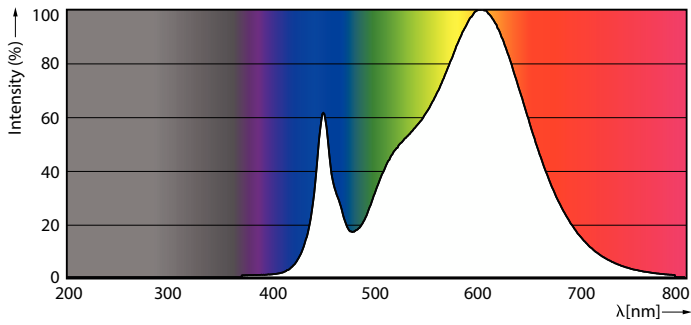
Dimensional drawing



Product	D1	D2	A1	A2	A3
MAS LEDtube VLE UN 1500mm UO 23W830 T8	26 mm	28 mm	1,500 mm	1,506 mm	1,514 mm

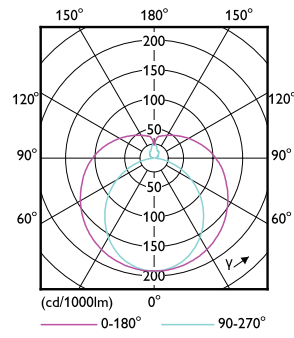
MASTER Value LED tube Universal T8

Photometric data



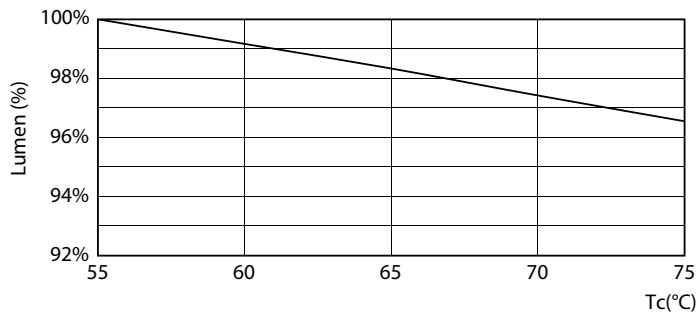
Spectral Power Distribution Colour - MAS LEDtube VLE UN 1500mm UO 23W830 T8

General uniform lighting - MAS LEDtube VLE UN 1500mm UO 23W830 T8

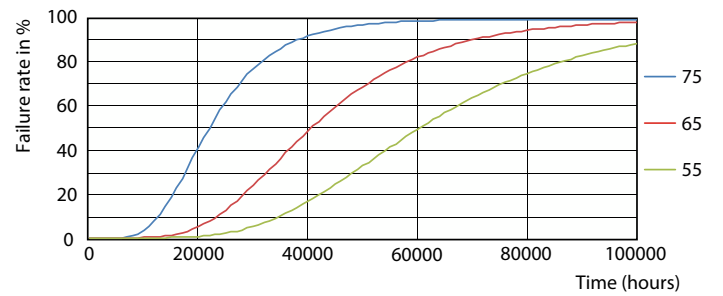


Light Distribution Diagram - MAS LEDtube VLE UN 1500mm UO 23W830 T8

Lifetime



Lumen Maintenance Diagram - MAS LEDtube VLE UN 1500mm UO 23W830 T8



FailureRate

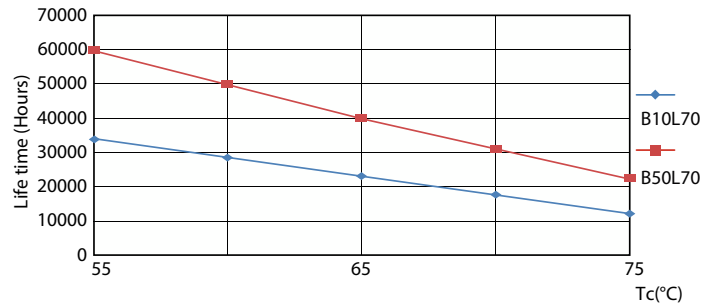
MASTER Value LED tube Universal T8

Lifetime



Lumen Maintenance Diagram - MAS LEDtube VLE UN 1500mm UO 23W830 T8

Life Expectancy Diagram



LifetimeVsTc

