

MASTER Value LED tube Universal T8



MAS LEDtube VLE UN 1200mm UO 15.5W865 T8

MASTER Value, LEDtube, T8, Universal, 1200 mm, 15.5 W, 36W TL-D, 6500 K, 2500 lm, CRI 80, 60000 hour(s)

The new Philips MASTER Value LEDtube Universal T8 brings ease and simplicity to your lighting project. That's because you do not need to match the driver technology anymore: a unique design enables the Philips MASTER Value LEDtube Universal T8 to directly fit in luminaires operating on either electromagnetic ballasts or HF electronic ballasts or mains power connection. It is so simple to operate and you no longer need to stock two types of tubes! Perfectly safe, reliable & easy to install Philips MASTER Value LEDtube Universal T8 is the ideal alternative to standard fluorescent tubes to maximize value over lifetime with high energy saving and lower maintenance costs.

Product data

General Information		Operating and Electrical	
Cap-Base	G13	Correlated Color Temperature (Nom)	6500 K
Nominal lifetime	60,000 hour(s)	Luminous Efficacy (rated) (Nom)	161 lm/W
Switching Cycle	50,000	Color Consistency	<6
Lighting Technology	LEDtube	Color rendering index (CRI)	80
Flux measurement reference	Sphere	LLMF At End Of Nominal Lifetime (Nom)	70 %
		Photobiological safety according to EN 62471	RG0
Light Technical			
Color Code	865 [CCT of 6500K]	Line Frequency	50 to 60 Hz
Beam Angle (Nom)	190 degree(s)	Input Frequency	50 to 60 Hz
Luminous Flux	2,500 lm	Power Consumption	15.5 W
Color Designation	Cool Daylight	Lamp Current (Nom)	75 mA

MASTER Value LED tube Universal T8

Starting Time (Nom)	0.5 s
Warm-up time to 60% light	0.5 s
Power Factor (Fraction)	0.9
Voltage (Nom)	220-240 V
LED alternative to fluorescent lamp power	36W TL-D
Inrush current at mains	8.6
Max. lamp no. on MCB B type 10A - Mains	89
Max. lamp no. on MCB B type 10A - EM ballast without Compensation Capacitor.	105
Max. lamp no. on MCB B type 10A - EM ballast with Compensation Capacitor.	19
Max. lamp no. on MCB B type 16A - Mains	143
Max. lamp no. on MCB B type 16A - EM ballast without Compensation Capacitor.	168
Max. lamp no. on MCB B type 16A - EM ballast with Compensation Capacitor.	30
Ballast Compatibility	Universal

Temperature

T-Case Maximum (Nom)	50 °C
----------------------	-------

Controls and Dimming

Dimmable	No
----------	----

Mechanical and Housing

Bulb Finish	Frosted
Bulb Material	Glass
Product Length	1,200 mm
Bulb Shape	T8

Net Weight (Piece)	0.240 kg
--------------------	----------

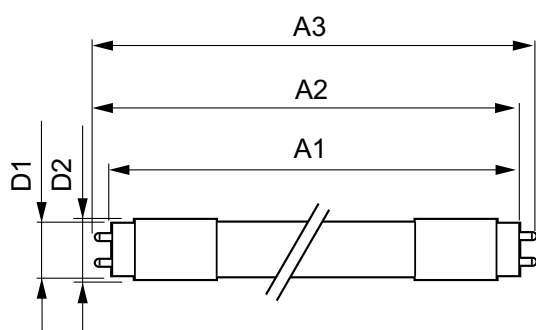
Approval and Application

Energy Efficiency Class	C
Energy Saving Product	Yes
Approval Marks	RoHS compliance
Energy Consumption kWh/1000 h	16 kWh
EPREL Registration Number	2302855
CE mark	Yes
EU RoHS compliant	Yes
Flickering value (PstLM) - Flickering value as per EN 61000-3-3	1
Stroboscopic effect visibility measure (SVM)	0.4
Ambient temperature range	-20 to +45 °C

Product Data

Order product name	MAS LEDtube VLE UN 1200mm UO 15.5W865 T8
Full product name	MAS LEDtube VLE UN 1200mm UO 15.5W865 T8
Full product code	871951431672000
Order code	929002997202
Material Nr. (12NC)	929002997202
Numerator - Quantity Per Pack	1
EAN/UPC - Product/Case	8719514316720
Numerator - Packs per outer box	10
EAN/UPC - Case	8719514316737

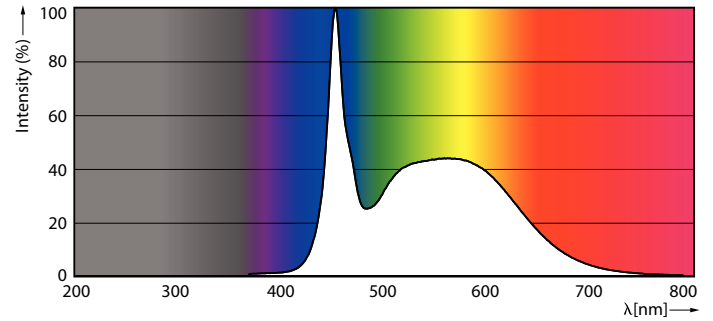
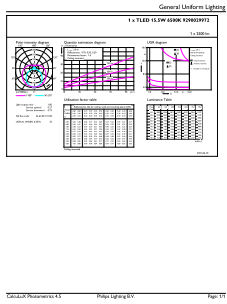
Dimensional drawing



Product	D1	D2	A1	A2	A3
MAS LEDtube VLE UN 1200mm UO 15.5W865 T8	26 mm	28 mm	1,199 mm	1,205 mm	1,213 mm

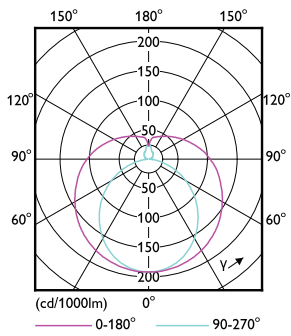
MASTER Value LED tube Universal T8

Photometric data



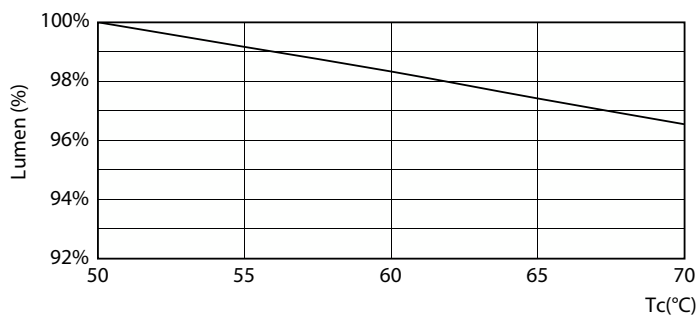
General uniform lighting - MAS LEDtube VLE UN 1200mm UO 15.5W865 T8

Spectral Power Distribution Colour - MAS LEDtube VLE UN 1200mm UO 15.5W865 T8

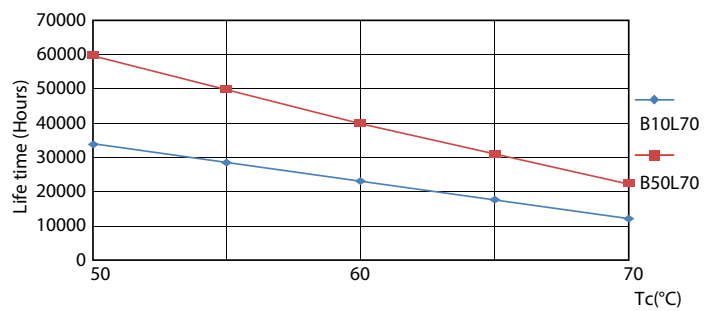


Light Distribution Diagram - MAS LEDtube VLE UN 1200mm UO 15.5W865 T8

Lifetime



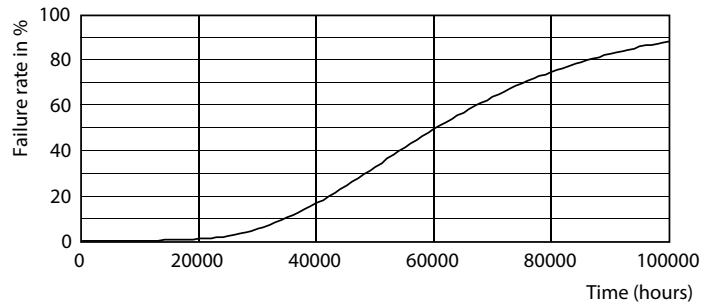
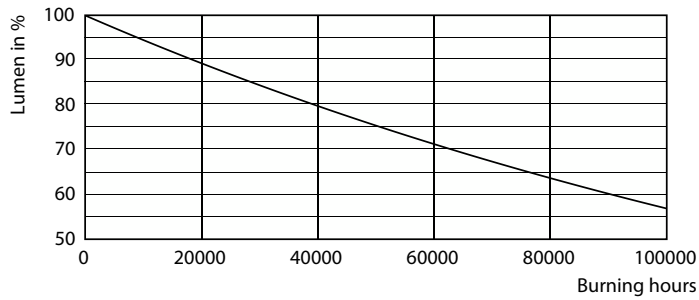
Lumen Maintenance Diagram - MAS LEDtube VLE UN 1200mm UO 15.5W865 T8



LEDtube 60K 5070 LifetimeVsTc-LED

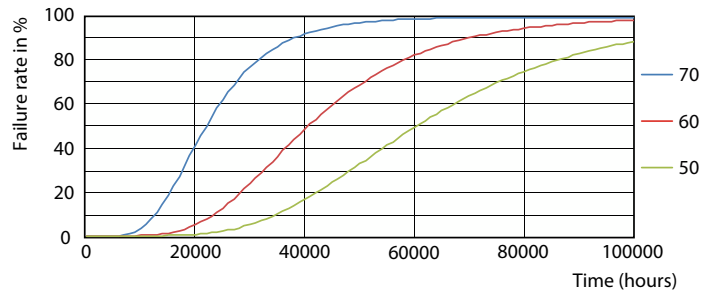
MASTER Value LED tube Universal T8

Lifetime



Lumen Maintenance Diagram - MAS LEDtube VLE UN 1200mm UO 15.5W865 T8

Life Expectancy Diagram



LEDtube 60K 5070 FailureRate-LED

