



# MASTER LEDtube T8

## MAS LEDtube DE 580mm 6.5W840 100-240V T8

MASTER, LEDtube, T8, Mains, Double-ended, 600 mm, 100-240 V, 6.5 W, 18W TL-D, 4000 K, 1050 lm, 50000 hour(s)

The Philips MASTER LEDtube integrates a LED light source into a traditional fluorescent form factor. Its unique design creates a perfectly uniform visual appearance, which cannot be distinguished from traditional fluorescent. These T8 LED tubes are the right choice for absolute performance and are designed to stand up to everyday conditions. Unparalleled savings thanks to low energy consumption and an exceptionally long lifetime ensure this tube masters every demanding application.

### Warnings and Safety

· NOTE: The overall energy efficiency and light distribution of any installation that uses these lamps will be determined by the design of the installation.

### Product data

General Information		Luminous Efficacy (rated) (Nom)	
Cap-Base	G13		161.00 lm/W
Nominal lifetime	50,000 hour(s)	Color Consistency	<6
Switching Cycle	200,000	Color rendering index (CRI)	80
Lighting Technology	LEDtube	LLMF At End Of Nominal Lifetime (Nom)	70 %
Light Technical		Operating and Electrical	
Color Code	840 [CCT of 4000K]	Line Frequency	50 to 60 Hz
Beam Angle (Nom)	240 degree(s)	Input Frequency	50 to 60 Hz
Luminous Flux	1,050 lm	Power Consumption	6.5 W
Color Designation	Cool White (CW)	Lamp Current (Max)	73 mA
Correlated Color Temperature (Nom)	4000 K	Lamp Current (Min)	26 mA
		Starting Time (Nom)	0.5 s

# MASTER LEDtube T8

Warm-up time to 60% light	0.5 s
Power Factor (Fraction)	0.9
Voltage (Nom)	100-240 V
LED alternative to fluorescent lamp power	18W TL-D
Ballast Compatibility	Mains

## Temperature

T-Case Maximum (Nom)	65 °C
----------------------	-------

## Controls and Dimming

Dimmable	No
----------	----

## Mechanical and Housing

Bulb Finish	Frosted
Bulb Material	Glass
Product Length	600 mm
Bulb Shape	T8
Net Weight (Piece)	0.120 kg

## Approval and Application

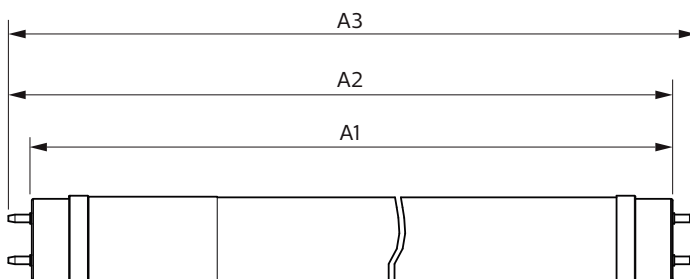
Energy Saving Product	Yes
-----------------------	-----

Approval Marks	RoHS compliance KEMA Keur certificate
EU RoHS compliant	Yes
Ambient temperature range	-20 °C to 45 °C

## Product Data

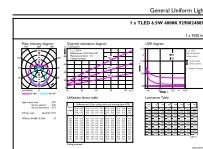
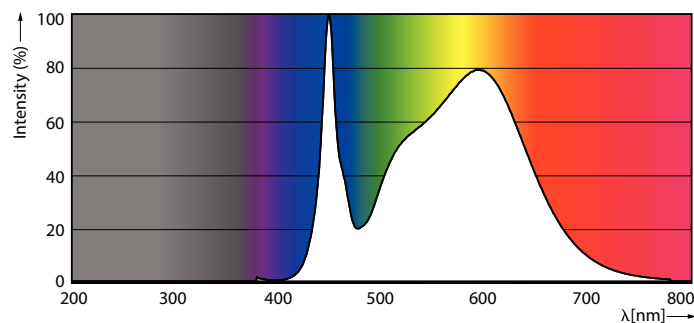
Order product name	MAS LEDtube DE 580mm 6.5W840 100-240V T8
Full product name	MAS LEDtube DE 580mm 6.5W840 100-240V T8
Full product code	871951430114600
Order code	929002488908
Material Nr. (12NC)	929002488908
Numerator - Quantity Per Pack	1
EAN/UPC - Product/Case	8719514301146
Numerator - Packs per outer box	20
EAN/UPC - Case	8719514301153

## Dimensional drawing



Product	D1	D2	A1	A2	A3
MAS LEDtube DE 580mm 6.5W840 100-240V T8	26 mm	28 mm	580 mm	587 mm	594 mm

## Photometric data

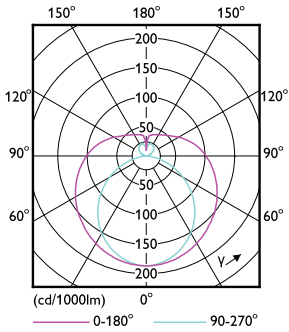


Spectral Power Distribution Colour - MAS LEDtube DE 580mm 6.5W840  
100-240V T8

General uniform lighting - MAS LEDtube DE 580mm 6.5W840 100-240V T8

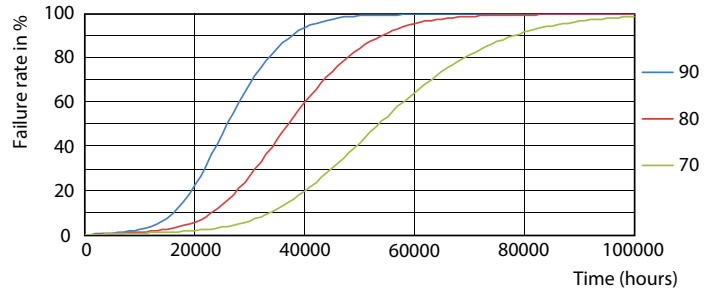
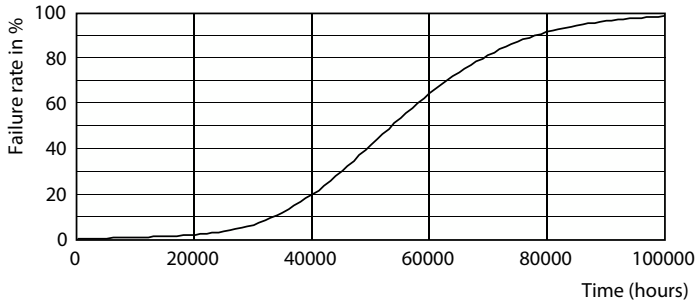
# MASTER LEDtube T8

## Photometric data



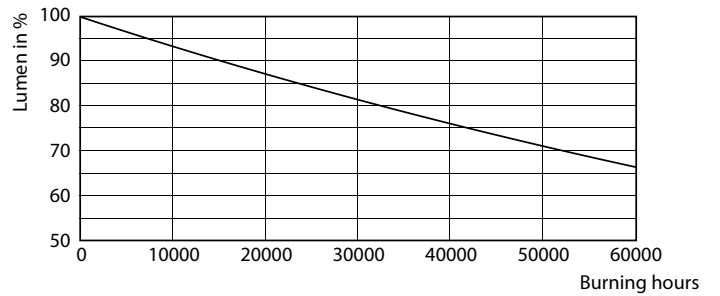
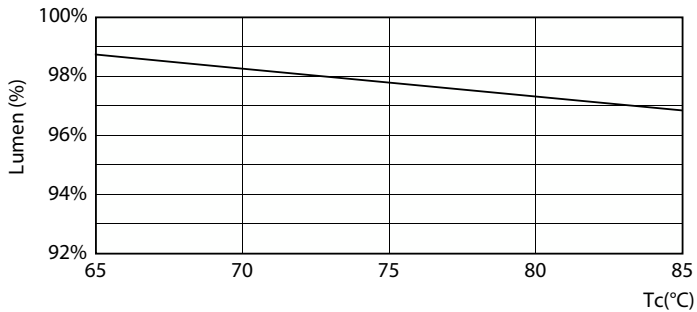
Light Distribution Diagram - MAS LEDtube DE 580mm 6.5W840 100-240V T8

## Lifetime



Life Expectancy Diagram

LEDtube 50K 7090 FailureRate-LED

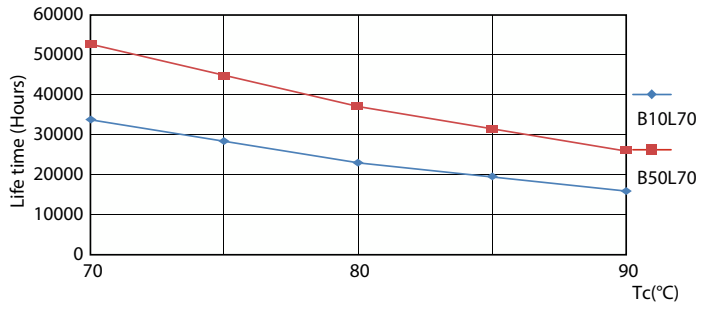


Lumen Maintenance Diagram - MAS LEDtube DE 580mm 6.5W840 100-240V T8

Lumen Maintenance Diagram - MAS LEDtube DE 580mm 6.5W840 100-240V T8

# MASTER LEDtube T8

## Lifetime



LifetimeVsTc

