



MASTER LED tube Mains T5



MAS LEDtube 1500mm UO 36W 840 T5

MASTER, LEDtube, T5, Mains, 1500 mm, 36 W, 80W TL5 HO, 4000 K, 5600 lm, CRI 80, 50000 hour(s)

The new Philips Master LEDtube Mains T5 brings simplicity to your lighting project. You don't need to pay attention to the driver technology anymore. Thanks to a unique design, Philips MASTER LEDtube Mains T5 installs in luminaires operating on mains power connection. So simple to operate! . Perfectly safe, reliable & easy to install Philips MASTER LEDtube Mains T5 is the ideal alternative to standard fluorescent tubes to maximize value over lifetime with high energy saving and lower maintenance costs.

Product data

General Information		Luminous Efficacy (rated) (Nom)	
Cap-Base	G5		155 lm/W
Nominal lifetime	50,000 hour(s)	Color Consistency	<6
Switching Cycle	200,000	Color rendering index (CRI)	80
Lighting Technology	LEDtube	LLMF At End Of Nominal Lifetime (Nom)	70 %
Flux measurement reference	Sphere	Photobiological safety according to EN 62471	RG0
Warranty period	5 years		
Light Technical		Operating and Electrical	
Color Code	840 [CCT of 4000K]	Line Frequency	50 to 60 Hz
Beam Angle (Nom)	200 degree(s)	Input Frequency	50 to 60 Hz
Luminous Flux	5,600 lm	Power Consumption	36 W
Color Designation	Cool White (CW)	Lamp Current (Nom)	160 mA
Correlated Color Temperature (Nom)	4000 K	Starting Time (Nom)	0.5 s
		Warm-up time to 60% light	0.5 s
		Power Factor (Fraction)	0.92

MASTER LED tube Mains T5

Voltage (Nom)	220-240 V
LED alternative to fluorescent lamp power	80W TL5 HO
Inrush current at mains	10.1
Max. lamp no. on MCB B type 10A – Mains	21
Max. lamp no. on MCB B type 10A – EM ballast without Compensation Capacitor.	-
Max. lamp no. on MCB B type 10A – EM ballast with Compensation Capacitor.	-
Max. lamp no. on MCB B type 16A – Mains	34
Max. lamp no. on MCB B type 16A – EM ballast without Compensation Capacitor.	-
Max. lamp no. on MCB B type 16A – EM ballast with Compensation Capacitor.	-
Ballast Compatibility	Mains

Temperature

T-Case Maximum (Nom)	75 °C
----------------------	-------

Controls and Dimming

Dimmable	No
----------	----

Mechanical and Housing

Bulb Finish	Frosted
Bulb Material	Glass
Product Length	1,500 mm
Bulb Shape	T5
Net Weight (Piece)	0.196 kg

Approval and Application

Energy Efficiency Class	D
-------------------------	---

Energy Saving Product	Yes
Approval Marks	RoHS compliance KEMA Keur certificate
Energy Consumption kWh/1000 h	36 kWh
EPREL Registration Number	403647
CE mark	Yes
EU RoHS compliant	Yes
Flickering value (PstLM) - Flickering value as per EN 61000-3-3	1
Stroboscopic effect visibility measure (SVM)	0.4
Ambient temperature range	-20 °C to 45 °C

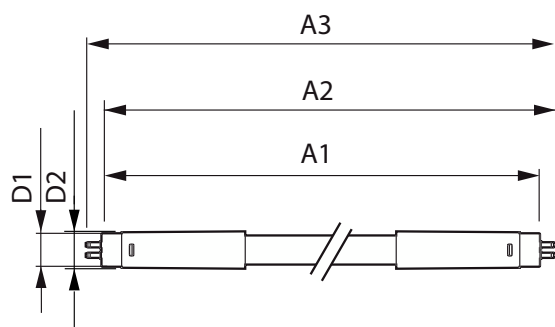
Application Conditions

Wireless Technology	Not applicable
---------------------	----------------

Product Data

Order product name	MAS LEDtube 1500mm UO 36W 840 T5
Full product name	MAS LEDtube 1500mm UO 36W 840 T5
Full product code	871951429052500
Order code	929002474902
Material Nr. (12NC)	929002474902
Numerator - Quantity Per Pack	1
EAN/UPC - Product/Case	8719514290525
Numerator - Packs per outer box	10
EAN/UPC - Case	8719514290532

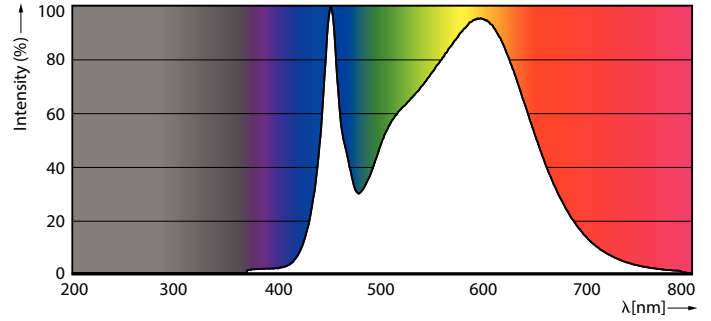
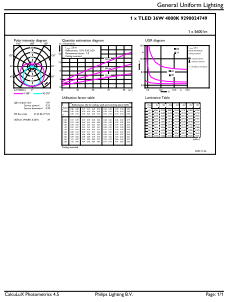
Dimensional drawing



Product	D1	D2	A1	A2	A3
MAS LEDtube 1500mm UO 36W 840 T5	15.5 mm	18.8 mm	1,449 mm	1,456.1 mm	1,463.2 mm

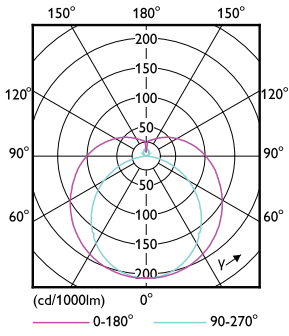
MASTER LED tube Mains T5

Photometric data



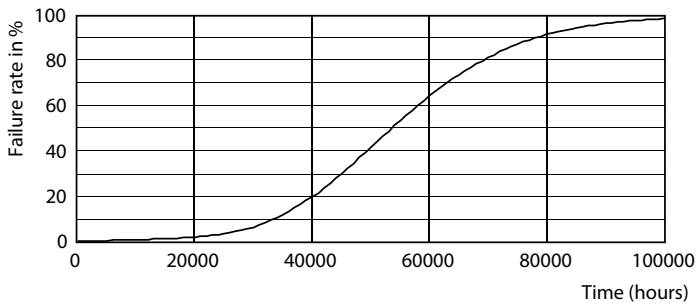
General uniform lighting - MAS LEDtube 1500mm UO 36W 840 T5

Spectral Power Distribution Colour - MAS LEDtube 1500mm UO 36W 840 T5

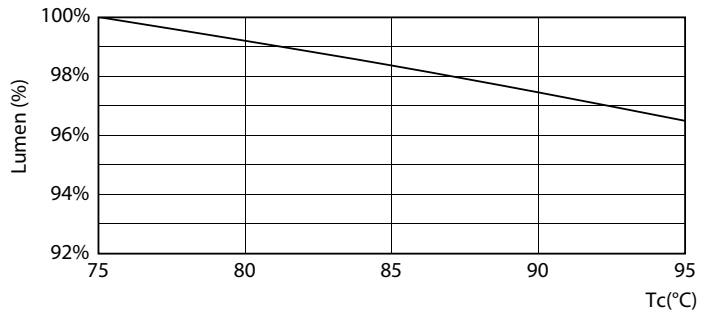


Light Distribution Diagram - MAS LEDtube 1500mm UO 36W 840 T5

Lifetime



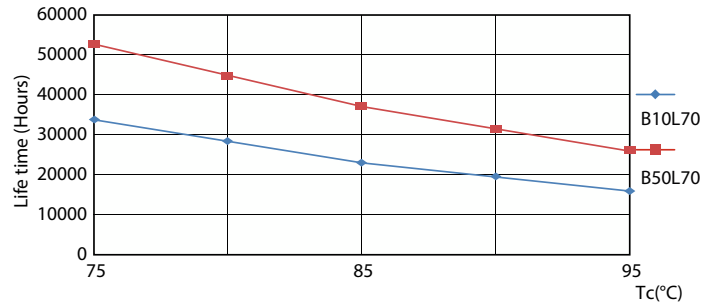
Life Expectancy Diagram



Lumen Maintenance Diagram - MAS LEDtube 1500mm UO 36W 840 T5

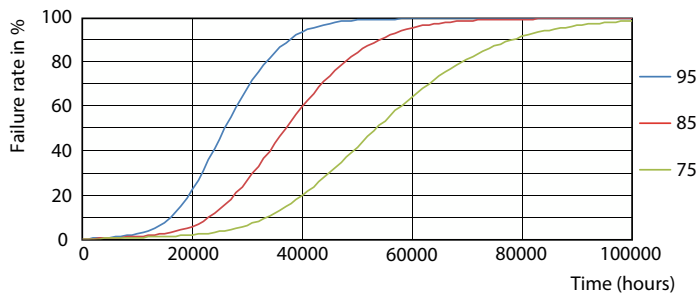
MASTER LED tube Mains T5

Lifetime



Lumen Maintenance Diagram - MAS LEDtube 1500mm UO 36W 840 T5

LEDtube 50K 7595 LifetimeVsTc-LED



LEDtube 50K 7595 FailureRate-LED

