



# CorePro LED PLC 2P

## LED PLC 11W 830 2P G24D

LED, PL-C, EM/Mains, 113 mm, 220-240 V, 11 W, 26W PL-C, 3000 K, 1250 lm, 15000 hour(s)

CorePro LED PLC 2P integrates a LED light source into a traditional fluorescent form factor. This product is the ideal solution for uplampping in general lighting applications: it meets basic lighting requirements, offers significant energy savings, and is environmentally friendly.

### Product data

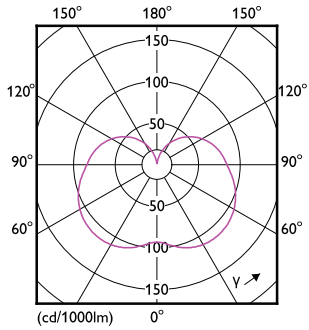
General Information	
Cap-Base	G24d
Nominal lifetime	15,000 hour(s)
Switching Cycle	50,000
Lighting Technology	LED
Light Technical	
Color Code	830 [CCT of 3000K]
Beam Angle (Nom)	240 degree(s)
Luminous Flux	1,250 lm
Color Designation	White (WH)
Correlated Color Temperature (Nom)	3000 K
Luminous Efficacy (rated) (Nom)	113.00 lm/W
Color Consistency	<6
Color rendering index (CRI)	80
LLMF At End Of Nominal Lifetime (Nom)	70 %
Operating and Electrical	
Line Frequency	50 to 60 Hz

Input Frequency	50 to 60 Hz
Power Consumption	11 W
Lamp Current (Max)	86 mA
Lamp Current (Min)	86 mA
Lamp Current (Nom)	86 mA
Starting Time (Nom)	0.5 s
Warm-up time to 60% light	0.5 s
Power Factor (Fraction)	0.5
Voltage (Nom)	220-240 V
LED alternative to fluorescent lamp power	26W PL-C
Ballast Compatibility	EM/Mains
Temperature	
T-Case Maximum (Nom)	67 °C
Controls and Dimming	
Dimmable	No



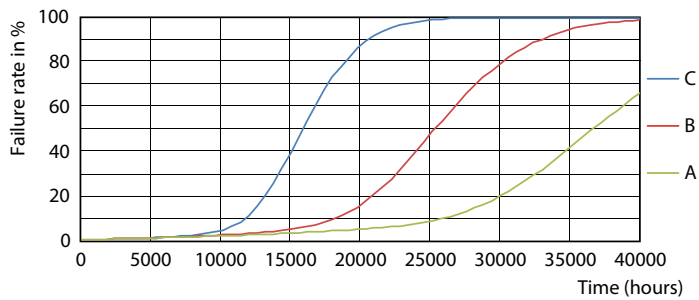
# CorePro LED PLC 2P

## Photometric data

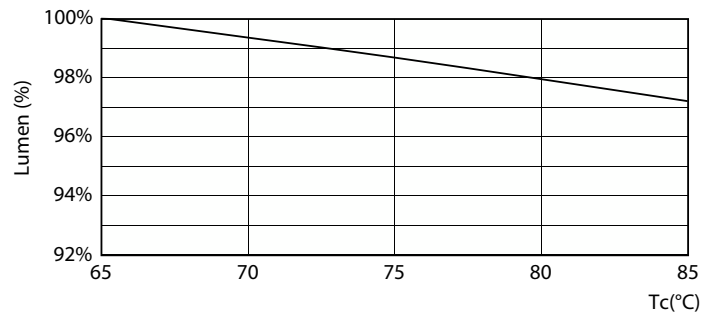


Light Distribution Diagram - LED PLC 11W 830 2P G24D

## Lifetime



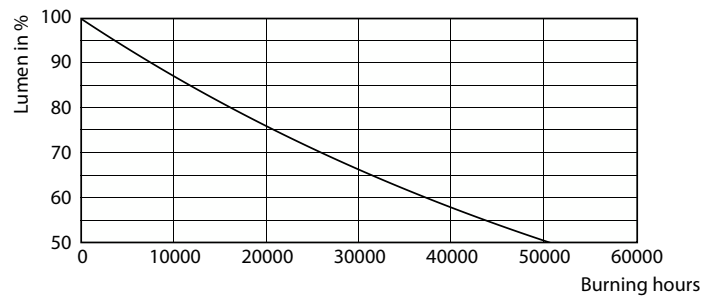
LEDtube 25K FailureRate



Lumen Maintenance Diagram - LED PLC 11W 830 2P G24D



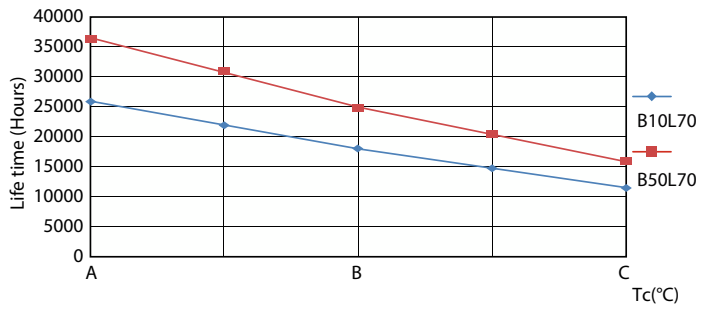
Life Expectancy Diagram



Lumen Maintenance Diagram - LED PLC 11W 830 2P G24D

# CorePro LED PLC 2P

## Lifetime



LEDtube 25K LifetimeVsTc

