



MASTER LED tube Mains T5

MAS LEDtube 1500mm HE 20W 840 T5 EU

MASTER, LEDtube, T5, Mains, 1500 mm, 20 W, 35W TL5 HE, 4000 K, 3000 lm, CRI 80, 60000 hour(s)

The new Philips Master LEDtube Mains T5 brings simplicity to your lighting project. You don't need to pay attention to the driver technology anymore. Thanks to a unique design, Philips MASTER LEDtube Mains T5 installs in luminaires operating on mains power connection. So simple to operate! . Perfectly safe, reliable & easy to install Philips MASTER LEDtube Mains T5 is the ideal alternative to standard fluorescent tubes to maximize value over lifetime with high energy saving and lower maintenance costs.

Product data

General Information	
Cap-Base	G5
Nominal lifetime	60,000 hour(s)
Switching Cycle	200,000
Lighting Technology	LEDtube
Flux measurement reference	Sphere
Warranty period	5 years

Light Technical	
Color Code	840 [CCT of 4000K]
Beam Angle (Nom)	200 degree(s)
Luminous Flux	3,000 lm
Color Designation	Cool White (CW)
Correlated Color Temperature (Nom)	4000 K

Luminous Efficacy (rated) (Nom)	150 lm/W
Color Consistency	<6
Color rendering index (CRI)	80
LLMF At End Of Nominal Lifetime (Nom)	70 %
Photobiological safety according to EN 62471	RG0

Operating and Electrical	
Line Frequency	50 to 60 Hz
Input Frequency	50 to 60 Hz
Power Consumption	20 W
Lamp Current (Nom)	99 mA
Starting Time (Nom)	0.5 s
Warm-up time to 60% light	0.5 s
Power Factor (Fraction)	0.9

MASTER LED tube Mains T5

Voltage (Nom)	220-240 V
LED alternative to fluorescent lamp power	35W TL5 HE
Inrush current at mains	7
Max. lamp no. on MCB B type 10A – Mains	63
Max. lamp no. on MCB B type 10A – EM ballast without Compensation Capacitor.	-
Max. lamp no. on MCB B type 10A – EM ballast with Compensation Capacitor.	-
Max. lamp no. on MCB B type 16A – Mains	100
Max. lamp no. on MCB B type 16A – EM ballast without Compensation Capacitor.	-
Max. lamp no. on MCB B type 16A – EM ballast with Compensation Capacitor.	-
Ballast Compatibility	Mains

Temperature

T-Case Maximum (Nom)	55 °C
----------------------	-------

Controls and Dimming

Dimmable	No
----------	----

Mechanical and Housing

Bulb Finish	Frosted
Bulb Material	Glass
Product Length	1,500 mm
Bulb Shape	T5
Net Weight (Piece)	0.176 kg

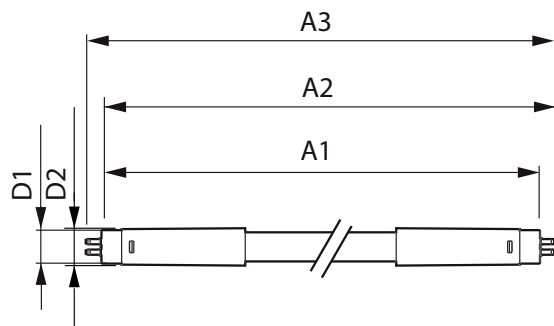
Approval and Application

Energy Efficiency Class	D
Energy Saving Product	Yes
Approval Marks	RoHS compliance CE marking KEMA Keur certificate
Energy Consumption kWh/1000 h	20 kWh
EPREL Registration Number	1476404
CE mark	Yes
EU RoHS compliant	Yes
Flickering value (PstLM) - Flickering value as per EN 61000-3-3	1
Stroboscopic effect visibility measure (SVM)	0.4
Ambient temperature range	-20 to +45 °C

Product Data

Order product name	MAS LEDtube 1500mm HE 20W 840 T5 EU
Full product name	MAS LEDtube 1500mm HE 20W 840 T5 EU
Full product code	871951433439700
Order code	929002421302
Material Nr. (12NC)	929002421302
Numerator - Quantity Per Pack	1
EAN/UPC - Product/Case	8719514334397
Numerator - Packs per outer box	10
EAN/UPC - Case	8719514334403

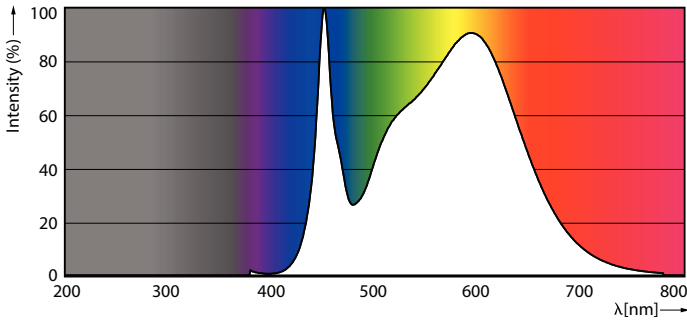
Dimensional drawing



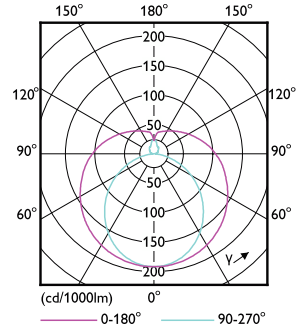
Product	D1	D2	A1	A2	A3
MAS LEDtube 1500mm HE 20W 840 T5 EU	15.7 mm	19 mm	1,449 mm	1,456.1 mm	1,463.2 mm

MASTER LED tube Mains T5

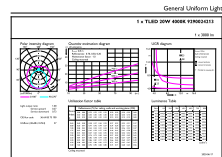
Photometric data



Spectral Power Distribution Colour - MAS LEDtube 1500mm HE 20W 840 T5 EU

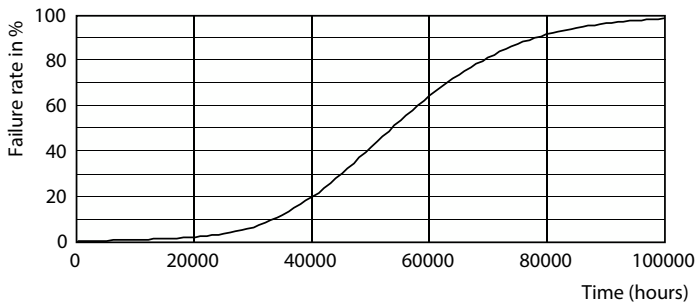


Light Distribution Diagram - MAS LEDtube 1500mm HE 20W 840 T5 EU

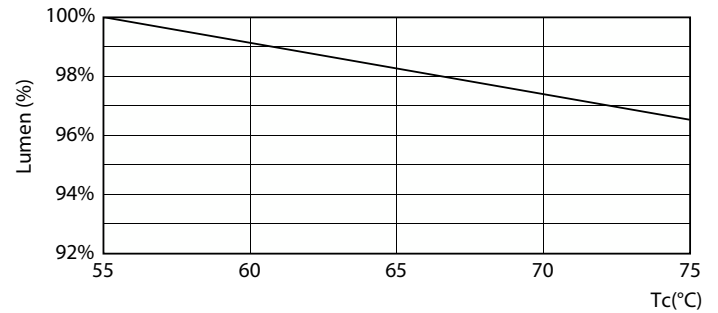


General uniform lighting - MAS LEDtube 1500mm HE 20W 840 T5 EU

Lifetime



Life Expectancy Diagram



Lumen Maintenance Diagram - MAS LEDtube 1500mm HE 20W 840 T5 EU

MASTER LED tube Mains T5

Lifetime



FailureRate

Lumen Maintenance Diagram - MAS LEDtube 1500mm HE 20W 840 T5 EU



LifetimeVsTc

