



# MASTER LED tube Mains T5

## MAS LEDtube 1500mm HE 20W 830 T5 EU

MASTER, LEDtube, T5, Mains, 1500 mm, 20 W, 35W TL5 HE, 3000 K, 2800 lm, CRI 80, 60000 hour(s)

The new Philips Master LEDtube Mains T5 brings simplicity to your lighting project. You don't need to pay attention to the driver technology anymore. Thanks to a unique design, Philips MASTER LEDtube Mains T5 installs in luminaires operating on mains power connection. So simple to operate! . Perfectly safe, reliable & easy to install, the Philips MASTER LEDtube Mains T5 is the ideal alternative to standard fluorescent tubes to maximise value over lifetime with high energy savings and lower maintenance costs.

### Product data

General Information		Luminous Efficacy (rated) (Nom)	
Cap-Base	G5		140 lm/W
Nominal lifetime	60,000 hour(s)	Color Consistency	<6
Switching Cycle	200,000	Color rendering index (CRI)	80
Lighting Technology	LEDtube	LLMF At End Of Nominal Lifetime (Nom)	70 %
Flux measurement reference	Sphere	Photobiological safety according to EN 62471	RG0
Warranty period	5 years		
Light Technical		Operating and Electrical	
Color Code	830 [CCT of 3000K]	Line Frequency	50 to 60 Hz
Beam Angle (Nom)	200 degree(s)	Input Frequency	50 to 60 Hz
Luminous Flux	2,800 lm	Power Consumption	20 W
Color Designation	White (WH)	Lamp Current (Nom)	99 mA
Correlated Color Temperature (Nom)	3000 K	Starting Time (Nom)	0.5 s
		Warm-up time to 60% light	0.5 s
		Power Factor (Fraction)	0.9

# MASTER LED tube Mains T5

Voltage (Nom)	220-240 V
LED alternative to fluorescent lamp power	35W TL5 HE
Inrush current at mains	7
Max. lamp no. on MCB B type 10A – Mains	63
Max. lamp no. on MCB B type 10A – EM ballast without Compensation Capacitor.	-
Max. lamp no. on MCB B type 10A – EM ballast with Compensation Capacitor.	-
Max. lamp no. on MCB B type 16A – Mains	100
Max. lamp no. on MCB B type 16A – EM ballast without Compensation Capacitor.	-
Max. lamp no. on MCB B type 16A – EM ballast with Compensation Capacitor.	-
Ballast Compatibility	Mains

## Temperature

T-Case Maximum (Nom)	55 °C
----------------------	-------

## Controls and Dimming

Dimmable	No
----------	----

## Mechanical and Housing

Bulb Finish	Frosted
Bulb Material	Glass
Product Length	1,500 mm
Bulb Shape	T5
Net Weight (Piece)	0.176 kg

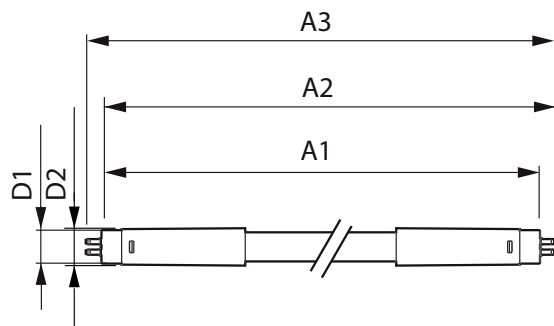
## Approval and Application

Energy Efficiency Class	D
Energy Saving Product	Yes
Approval Marks	RoHS compliance CE marking KEMA Keur certificate
Energy Consumption kWh/1000 h	20 kWh
EPREL Registration Number	1476403
CE mark	Yes
EU RoHS compliant	Yes
Flickering value (PstLM) - Flickering value as per EN 61000-3-3	1
Stroboscopic effect visibility measure (SVM)	0.4
Ambient temperature range	-20 to +45 °C

## Product Data

Order product name	MAS LEDtube 1500mm HE 20W 830 T5 EU
Full product name	MAS LEDtube 1500mm HE 20W 830 T5 EU
Full product code	871951433437300
Order code	929002421202
Material Nr. (12NC)	929002421202
Numerator - Quantity Per Pack	1
EAN/UPC - Product/Case	8719514334373
Numerator - Packs per outer box	10
EAN/UPC - Case	8719514334380

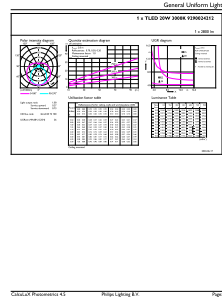
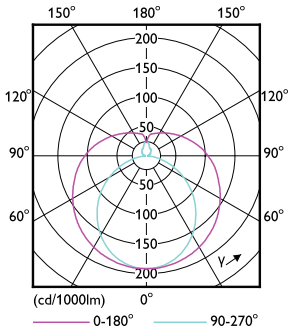
## Dimensional drawing



Product	D1	D2	A1	A2	A3
MAS LEDtube 1500mm HE 20W 830 T5 EU	15.7 mm	19 mm	1,449 mm	1,456.1 mm	1,463.2 mm

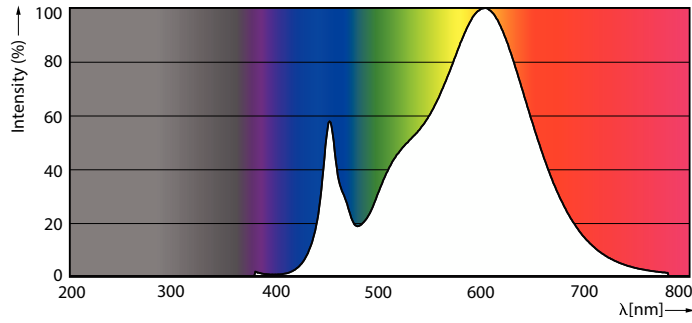
# MASTER LED tube Mains T5

## Photometric data



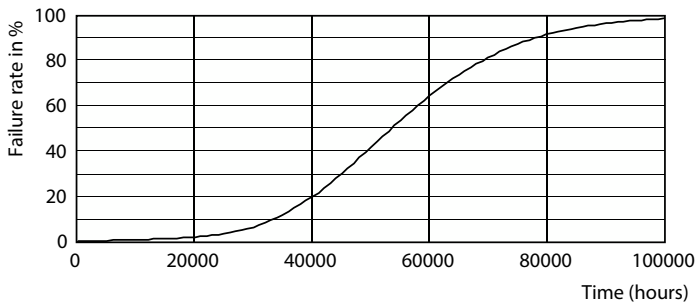
Light Distribution Diagram - MAS LEDtube 1500mm HE 20W 830 T5 EU

General uniform lighting - MAS LEDtube 1500mm HE 20W 830 T5 EU

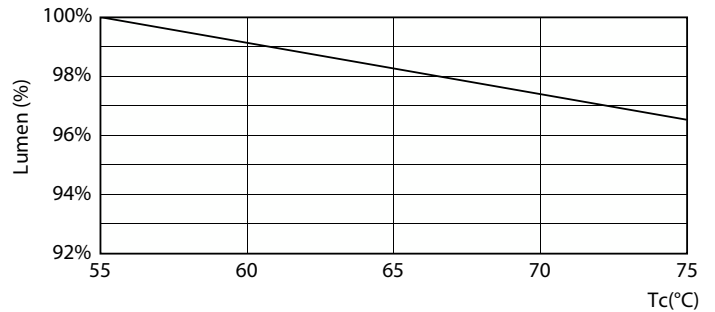


Spectral Power Distribution Colour - MAS LEDtube 1500mm HE 20W 830 T5 EU

## Lifetime



Life Expectancy Diagram



Lumen Maintenance Diagram - MAS LEDtube 1500mm HE 20W 830 T5 EU

# MASTER LED tube Mains T5

## Lifetime



FailureRate

Lumen Maintenance Diagram - MAS LEDtube 1500mm HE 20W 830 T5 EU



LifetimeVsTc

