



MASTER LED tube Mains T5

MAS LEDtube 1200mm HE 16.5W 865 T5 HK

LEDtube, T5, 1200 mm, 16.5 W, 6500 K, 2500 lm, 50000 hour(s)

The new Philips Master LEDtube Mains T5 brings simplicity to your lighting project. You don't need to pay attention to the driver technology anymore. Thanks to a unique design, Philips MASTER LEDtube Mains T5 installs in luminaires operating on mains power connection. So simple to operate! . Perfectly safe, reliable & easy to install, the Philips MASTER LEDtube Mains T5 is the ideal alternative to standard fluorescent tubes to maximise value over lifetime with high energy savings and lower maintenance costs.

Product data

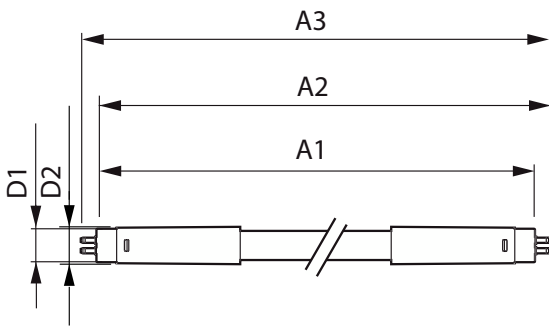
General Information		LLMF At End Of Nominal Lifetime (Nom)		70 %	
Cap-Base	G5	Photobiological safety according to EN 62471 RGO			
Nominal lifetime	50,000 hour(s)	Sustainability Data			
Switching Cycle	200,000	Product non-virgin material ratio	0 %		
Lighting Technology	LEDtube	Operating and Electrical			
Light Technical		Input Frequency	50 to 60 Hz		
Color Code	865 [CCT of 6500K]	Power Consumption	16.5 W		
Beam Angle (Nom)	200 degree(s)	Lamp Current (Max)	180 mA		
Luminous Flux	2,500 lm	Lamp Current (Min)	70 mA		
Color Designation	Cool Daylight	Wattage Equivalent	28 W		
Correlated Color Temperature (Nom)	6500 K	Starting Time (Nom)	0.5 s		
Luminous Efficacy (rated) (Nom)	151 lm/W	Warm-up time to 60% light	0.5 s		
Color Consistency	<6	Power Factor (Fraction)	0.9		
Color rendering index (CRI)	80				

MASTER LED tube Mains T5

Voltage (Nom)	100-240 V
Temperature	
T-Case Maximum (Nom)	70 °C
Controls and Dimming	
Dimmable	No
Mechanical and Housing	
Bulb Finish	Frosted
Bulb Material	Glass
Product Length	1,200 mm
Bulb Shape	T5
Net Weight (Piece)	0.143 kg
Approval and Application	
Energy Saving Product	Yes
Approval Marks	RoHS compliance KEMA Keur certificate

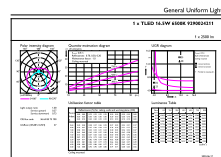
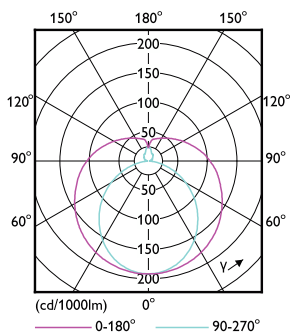
EU RoHS compliant	Yes
Ambient temperature range	-20 to +45 °C
Post-consumer recycled plastic material ratio	0 %
Product Data	
Order product name	MAS LEDtube 1200mm HE 16.5W 865 T5 HK
Full product name	MAS LEDtube 1200mm HE 16.5W 865 T5 HK
Full product code	872110314233700
Order code	929002421168
Material Nr. (12NC)	929002421168
Numerator - Quantity Per Pack	1
EAN/UPC - Product/Case	8721103142337
Numerator - Packs per outer box	10
EAN/UPC - Case	8721103142344

Dimensional drawing



Product	D1	D2	A1	A2	A3
MAS LEDtube 1200mm HE 16.5W 865 T5 HK	15.8 mm	19 mm	1,149 mm	1,156.1 mm	1,163.2 mm

Photometric data

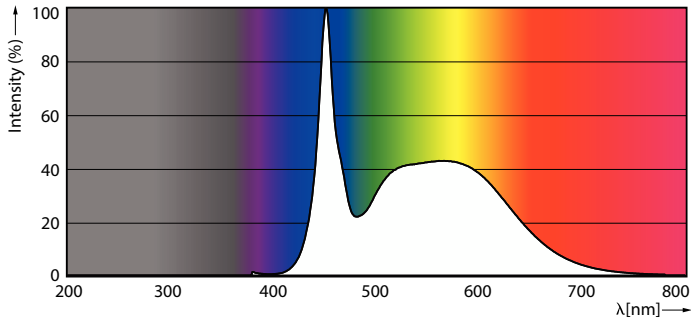


Light Distribution Diagram - MAS LEDtube 1200mm HE 16.5W 865 T5 HK

General uniform lighting - MAS LEDtube 1200mm HE 16.5W 865 T5 HK

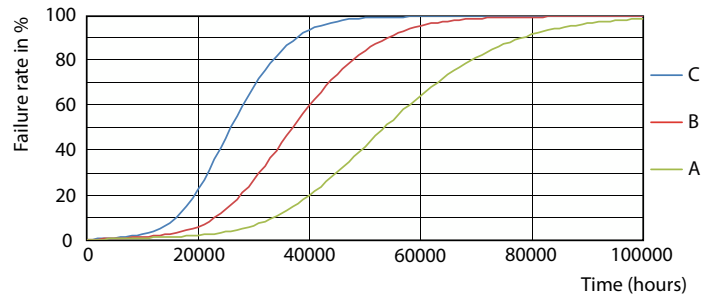
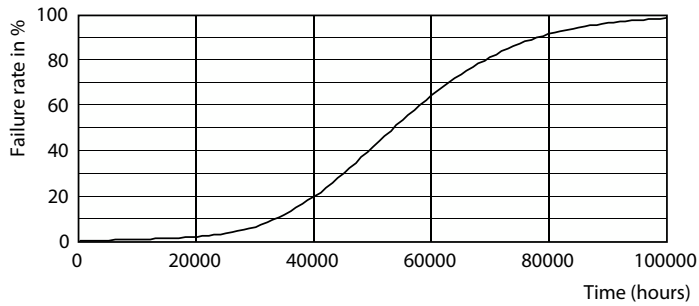
MASTER LED tube Mains T5

Photometric data



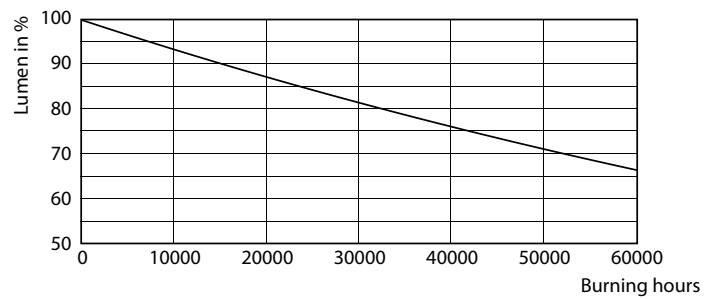
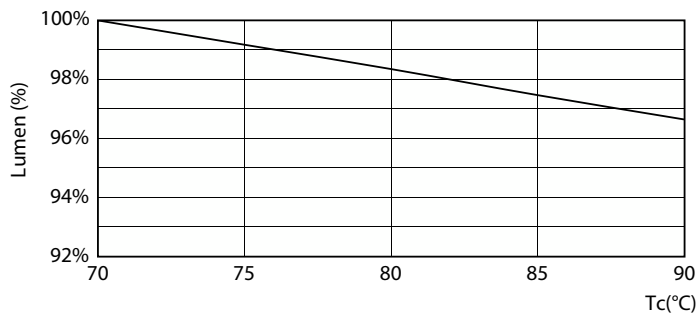
Spectral Power Distribution Colour - MAS LEDtube 1200mm HE 16.5W 865 T5 HK

Lifetime



Life Expectancy Diagram

FailureRate

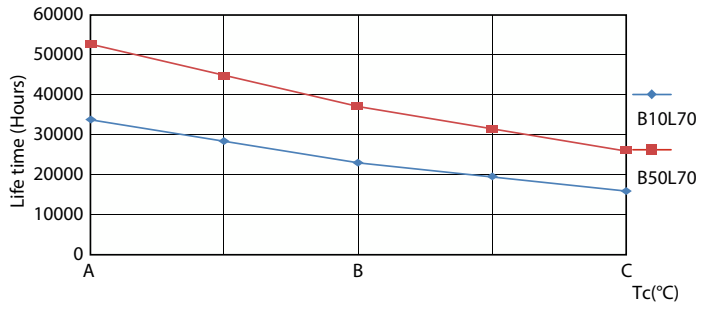


Lumen Maintenance Diagram - MAS LEDtube 1200mm HE 16.5W 865 T5 HK

Lumen Maintenance Diagram - MAS LEDtube 1200mm HE 16.5W 865 T5 HK

MASTER LED tube Mains T5

Lifetime



LifetimeVsTc

