



# MASTER LED tube Mains T5

## MAS LEDtube 1200mm HE 16.5W 865 T5 CN

LEDtube, T5, 1200 mm, 16.5 W, 6500 K, 2500 lm, 50000 hour(s)

The new Philips Master LEDtube Mains T5 brings simplicity to your lighting project. You don't need to pay attention to the driver technology anymore. Thanks to a unique design, Philips MASTER LEDtube Mains T5 installs in luminaires operating on mains power connection. So simple to operate! . Perfectly safe, reliable & easy to install Philips MASTER LEDtube Mains T5 is the ideal alternative to standard fluorescent tubes to maximize value over lifetime with high energy saving and lower maintenance costs.

### Product data

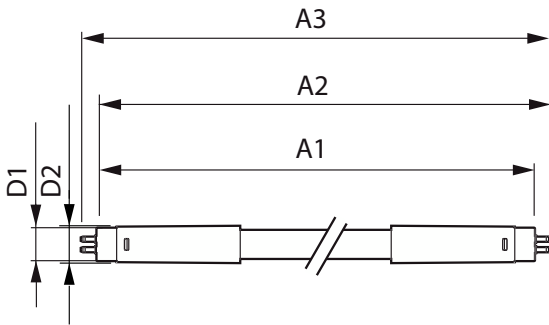
General Information		LLMF At End Of Nominal Lifetime (Nom)		70 %	
Cap-Base	G5	Photobiological safety according to EN 62471 RGO			
Nominal lifetime	50,000 hour(s)				
Switching Cycle	200,000				
Lighting Technology	LEDtube				
Light Technical		Operating and Electrical			
Color Code	865 [CCT of 6500K]	Input Frequency	50 to 60 Hz		
Beam Angle (Nom)	200 degree(s)	Power Consumption	16.5 W		
Luminous Flux	2,500 lm	Lamp Current (Max)	180 mA		
Color Designation	Cool Daylight	Lamp Current (Min)	70 mA		
Correlated Color Temperature (Nom)	6500 K	Wattage Equivalent	28 W		
Luminous Efficacy (rated) (Nom)	151 lm/W	Starting Time (Nom)	0.5 s		
Color Consistency	<6	Warm-up time to 60% light	0.5 s		
Color rendering index (CRI)	80	Power Factor (Fraction)	0.9		
		Voltage (Nom)	100-240 V		

# MASTER LED tube Mains T5

Temperature	
T-Case Maximum (Nom)	70 °C
Controls and Dimming	
Dimmable	No
Mechanical and Housing	
Bulb Finish	Frosted
Bulb Material	Glass
Product Length	1,200 mm
Bulb Shape	T5
Net Weight (Piece)	0.143 kg
Approval and Application	
Energy Saving Product	Yes
Approval Marks	RoHS compliance KEMA Keur certificate
EU RoHS compliant	Yes

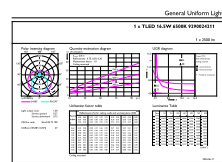
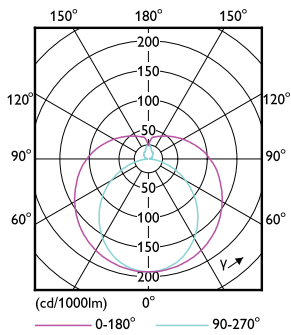
Ambient temperature range	-20 to +45 °C
Product Data	
Order product name	MAS LEDtube 1200mm HE 16.5W 865 T5 CN
Full product name	MAS LEDtube 1200mm HE 16.5W 865 T5 CN
Full product code	872016939015700
Order code	929002421110
Material Nr. (12NC)	929002421110
Numerator - Quantity Per Pack	1
EAN/UPC - Product/Case	8720169390157
Numerator - Packs per outer box	10
EAN/UPC - Case	8720169390164

## Dimensional drawing



Product	D1	D2	A1	A2	A3
MAS LEDtube 1200mm HE 16.5W 865 T5 CN	15.8 mm	19 mm	1,149 mm	1,156.1 mm	1,163.2 mm

## Photometric data

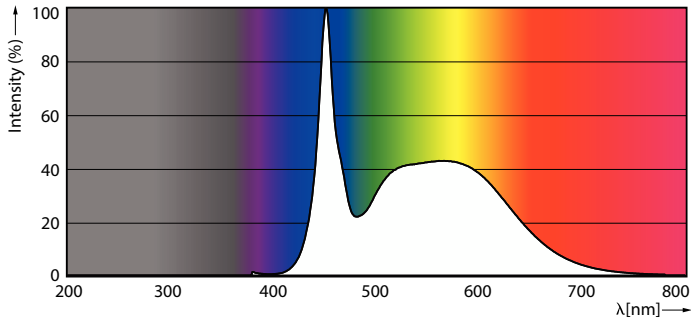


Light Distribution Diagram - MAS LEDtube 1200mm HE 16.5W 865 T5 CN

General uniform lighting - MAS LEDtube 1200mm HE 16.5W 865 T5 CN

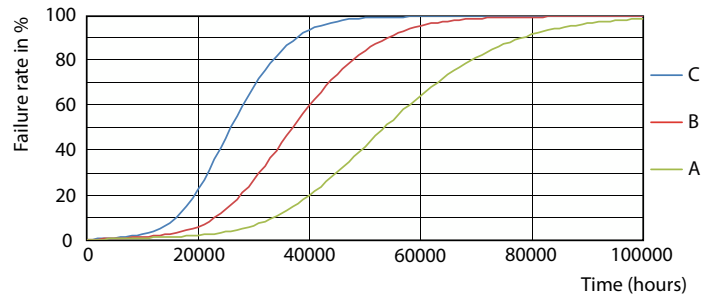
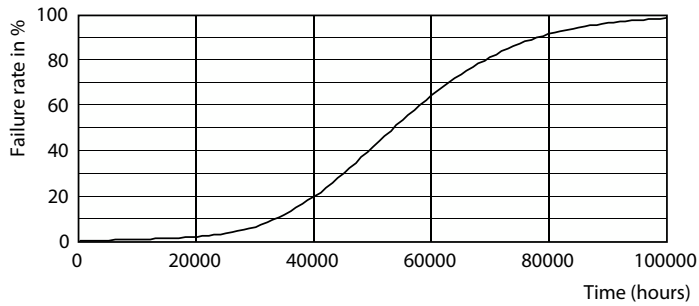
# MASTER LED tube Mains T5

## Photometric data



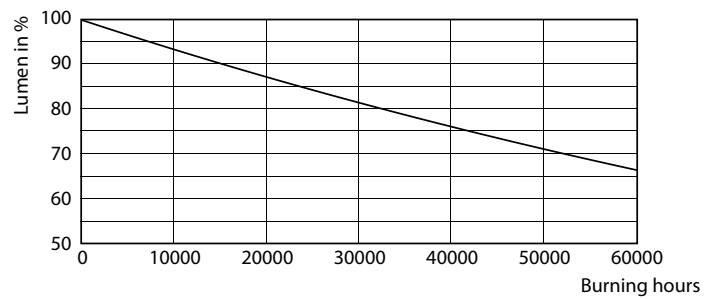
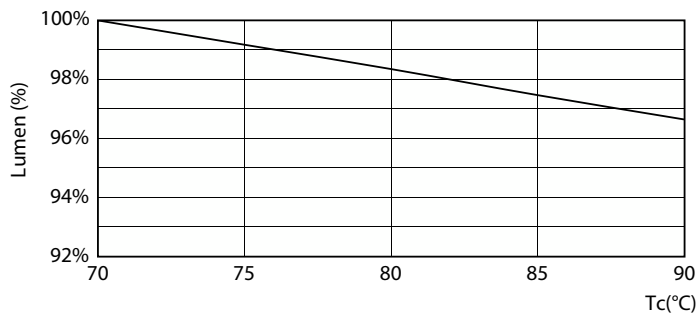
Spectral Power Distribution Colour - MAS LEDtube 1200mm HE 16.5W 865 T5 CN

## Lifetime



Life Expectancy Diagram

FailureRate

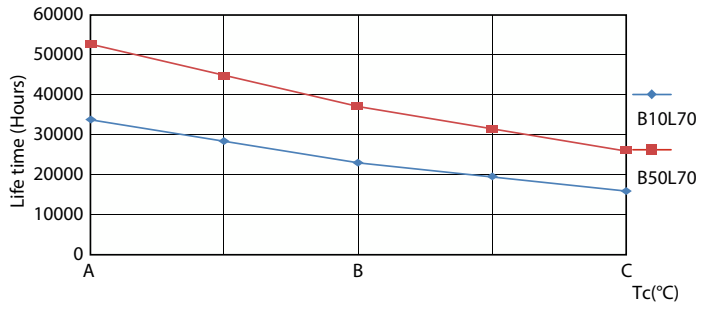


Lumen Maintenance Diagram - MAS LEDtube 1200mm HE 16.5W 865 T5 CN

Lumen Maintenance Diagram - MAS LEDtube 1200mm HE 16.5W 865 T5 CN

# MASTER LED tube Mains T5

## Lifetime



LifetimeVsTc

