



MASTER LED tube Mains T5

MAS LEDtube 600mm HE 8W 840 T5 CN

LEDtube, T5, 600 mm, 8 W, 4000 K, 1050 lm, 50000 hour(s)

The new Philips Master LEDtube Mains T5 brings simplicity to your lighting project. You don't need to pay attention to the driver technology anymore. Thanks to a unique design, Philips MASTER LEDtube Mains T5 installs in luminaires operating on mains power connection. So simple to operate! . Perfectly safe, reliable & easy to install Philips MASTER LEDtube Mains T5 is the ideal alternative to standard fluorescent tubes to maximize value over lifetime with high energy saving and lower maintenance costs.

Product data

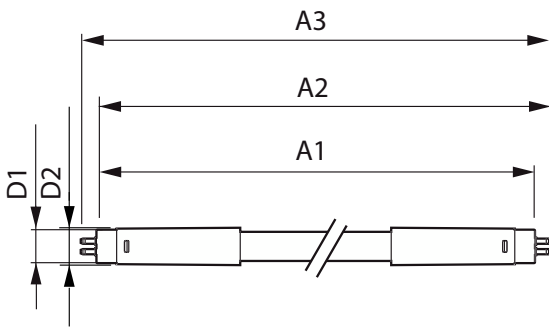
General Information		LLMF At End Of Nominal Lifetime (Nom)		70 %	
Cap-Base	G5	Photobiological safety according to EN 62471 RGO			
Nominal lifetime	50,000 hour(s)				
Switching Cycle	200,000				
Lighting Technology	LEDtube				
Light Technical		Operating and Electrical			
Color Code	840 [CCT of 4000K]	Input Frequency	50 to 60 Hz		
Beam Angle (Nom)	200 degree(s)	Power Consumption	8 W		
Luminous Flux	1,050 lm	Lamp Current (Max)	90 mA		
Color Designation	Cool White (CW)	Lamp Current (Min)	35 mA		
Correlated Color Temperature (Nom)	4000 K	Wattage Equivalent	14 W		
Luminous Efficacy (rated) (Nom)	131 lm/W	Starting Time (Nom)	0.5 s		
Color Consistency	<6	Warm-up time to 60% light	0.5 s		
Color rendering index (CRI)	80	Power Factor (Fraction)	0.9		
		Voltage (Nom)	100-240 V		

MASTER LED tube Mains T5

Temperature	
T-Case Maximum (Nom)	60 °C
Controls and Dimming	
Dimmable	No
Mechanical and Housing	
Bulb Finish	Frosted
Bulb Material	Glass
Product Length	600 mm
Bulb Shape	T5
Net Weight (Piece)	0.077 kg
Approval and Application	
Energy Saving Product	Yes
Approval Marks	RoHS compliance KEMA Keur certificate
EU RoHS compliant	Yes

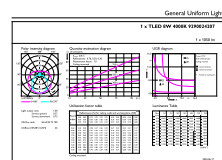
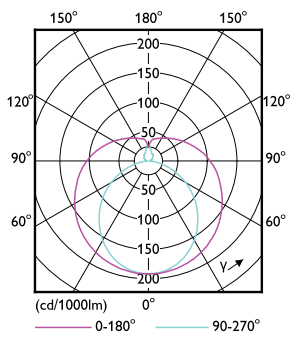
Ambient temperature range	-20 to +45 °C
Application Conditions	
Wireless Technology	Not applicable
Product Data	
Order product name	MAS LEDtube 600mm HE 8W 840 T5 CN
Full product name	MAS LEDtube 600mm HE 8W 840 T5 CN
Full product code	872016939005800
Order code	929002420710
Material Nr. (12NC)	929002420710
Numerator - Quantity Per Pack	1
EAN/UPC - Product/Case	8720169390058
Numerator - Packs per outer box	10
EAN/UPC - Case	8720169390065

Dimensional drawing



Product	D1	D2	A1	A2	A3
MAS LEDtube 600mm HE 8W 840 T5 CN	15.8 mm	19 mm	549 mm	556.1 mm	563.2 mm

Photometric data

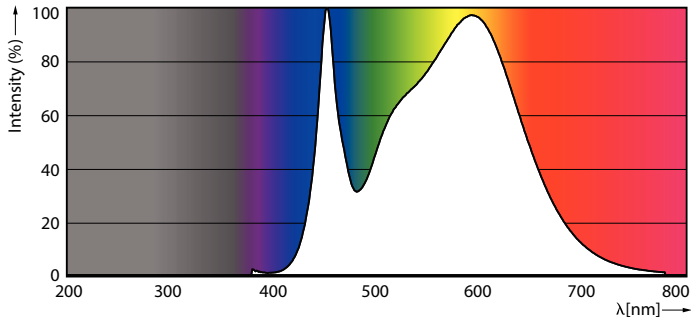


Light Distribution Diagram - MAS LEDtube 600mm HE 8W 840 T5 CN

General uniform lighting - MAS LEDtube 600mm HE 8W 840 T5 CN

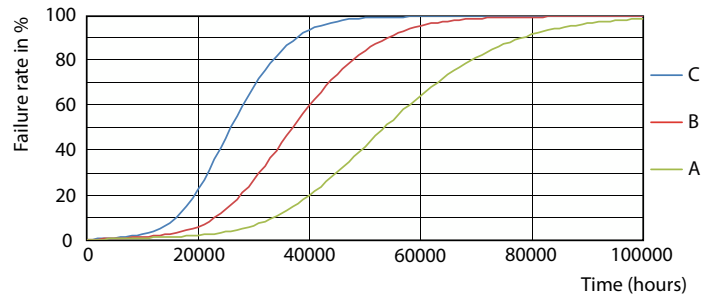
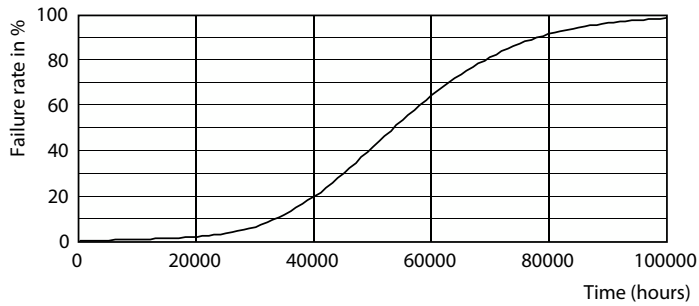
MASTER LED tube Mains T5

Photometric data



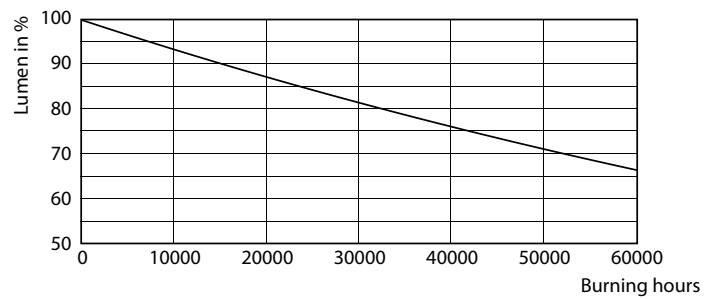
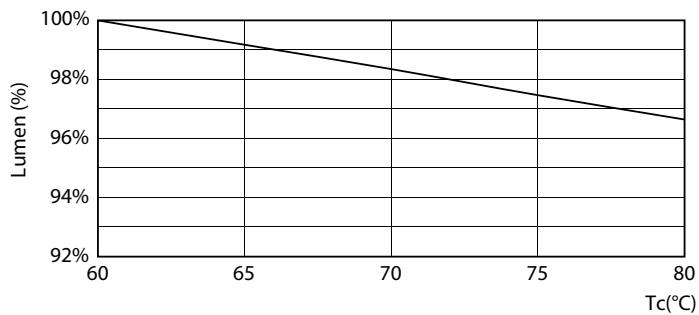
Spectral Power Distribution Colour - MAS LEDtube 600mm HE 8W 840 T5 CN

Lifetime



Life Expectancy Diagram

FailureRate

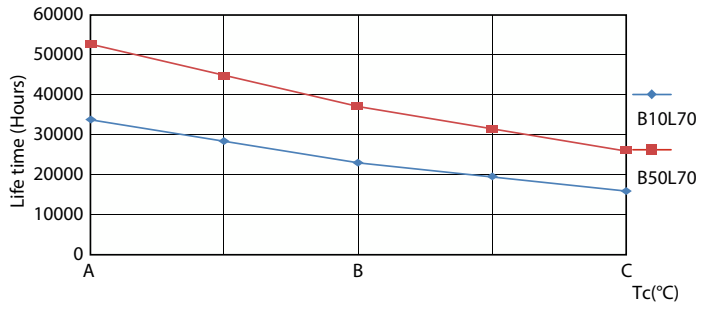


Lumen Maintenance Diagram - MAS LEDtube 600mm HE 8W 840 T5 CN

Lumen Maintenance Diagram - MAS LEDtube 600mm HE 8W 840 T5 CN

MASTER LED tube Mains T5

Lifetime



LifetimeVsTc

