



# MASTER LED tube InstantFit HF T5



## MAS LEDtube HF 1200mm HO 26W 865 T5 OE

MASTER, LEDtube, T5, HF, 1200 mm, 26 W, 54W TL5 HO, 6500 K, 3900 lm, CRI 80, 60000 hour(s)

The Philips MASTER LEDtube integrates a LED light source into a traditional fluorescent form factor. Its unique design creates a perfectly uniform visual appearance, which cannot be distinguished from traditional fluorescent. These T5 lighting tubes are the right choice for absolute performance and are designed to stand up to everyday conditions. Unparalleled savings thanks to low energy consumption and an exceptionally long lifetime make these T5 LED tubes the choice for every demanding application.

### Product data

General Information	
Cap-Base	G5
Nominal lifetime	60,000 hour(s)
Switching Cycle	50,000
Lighting Technology	LEDtube
Flux measurement reference	Sphere
Warranty period	5 years
Light Technical	
Color Code	865 [CCT of 6500K]
Beam Angle (Nom)	200 degree(s)
Luminous Flux	3,900 lm
Color Designation	Cool Daylight
Correlated Color Temperature (Nom)	6500 K

Luminous Efficacy (rated) (Nom)	150 lm/W
Color Consistency	<6
Color rendering index (CRI)	80
LLMF At End Of Nominal Lifetime (Nom)	70 %
Photobiological safety according to EN 62471	RG0
Operating and Electrical	
Line Frequency	30K to 60K Hz
Input Frequency	30K to 60K Hz
Power Consumption	26 W
Lamp Current (Max)	620 mA
Lamp Current (Min)	300 mA
Starting Time (Nom)	0.5 s
Warm-up time to 60% light	0.5 s

## MASTER LED tube InstantFit HF T5

Power Factor (Fraction)	0.92
Voltage (Nom)	20-90 V
LED alternative to fluorescent lamp power	54W TL5 HO
Inrush current at mains	-
Max. lamp no. on MCB B type 10A – Mains	-
Max. lamp no. on MCB B type 10A – EM ballast without Compensation Capacitor.	-
Max. lamp no. on MCB B type 10A – EM ballast with Compensation Capacitor.	-
Max. lamp no. on MCB B type 16A – Mains	-
Max. lamp no. on MCB B type 16A – EM ballast without Compensation Capacitor.	-
Max. lamp no. on MCB B type 16A – EM ballast with Compensation Capacitor.	-
Ballast Compatibility	HF

### Temperature

T-Case Maximum (Nom)	50 °C
----------------------	-------

### Controls and Dimming

Dimmable	Yes - Check ballast compatibility
----------	-----------------------------------

### Mechanical and Housing

Bulb Finish	Frosted
Bulb Material	Glass
Product Length	1,200 mm
Bulb Shape	T5

Net Weight (Piece)	0.160 kg
--------------------	----------

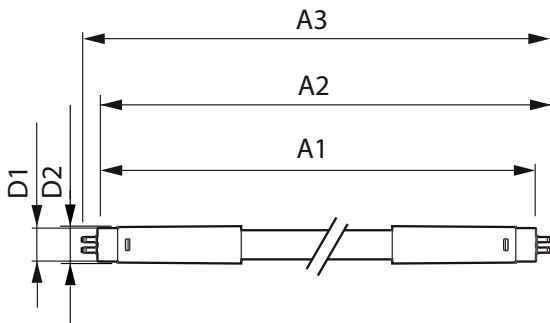
### Approval and Application

Energy Efficiency Class	D
Energy Saving Product	Yes
Approval Marks	RoHS compliance KEMA Keur certificate
Energy Consumption kWh/1000 h	26 kWh
EPREL Registration Number	1384142
CE mark	Yes
EU RoHS compliant	Yes
Ambient temperature range	-20 °C to 45 °C

### Product Data

Order product name	MAS LEDtube HF 1200mm HO 26W 865 T5 OE
Full product name	MAS LEDtube HF 1200mm HO 26W 865 T5 OE
Full product code	87186997495200
Order code	929002352202
Material Nr. (12NC)	929002352202
Numerator - Quantity Per Pack	1
EAN/UPC - Product/Case	8718699749552
Numerator - Packs per outer box	10
EAN/UPC - Case	8718699749569

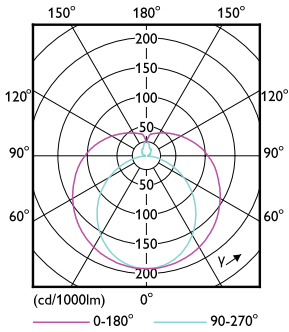
## Dimensional drawing



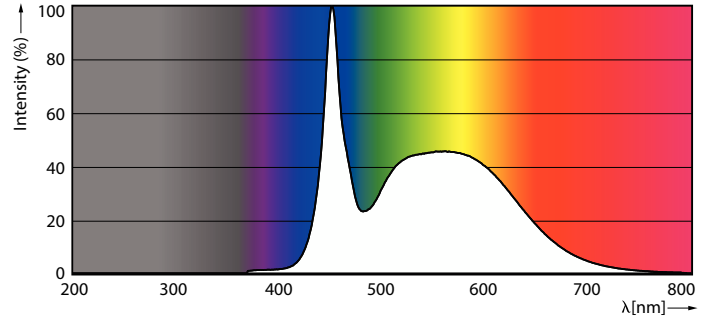
Product	D1	D2	A1	A2	A3
MAS LEDtube HF 1200mm HO 26W 865 T5 OE	15.5 mm	19 mm	1,149 mm	1,156 mm	1,163 mm

# MASTER LED tube InstantFit HF T5

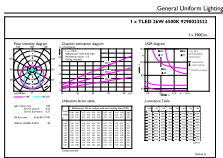
## Photometric data



Light Distribution Diagram - MAS LEDtube HF 1200mm HO 26W 865 T5 OE



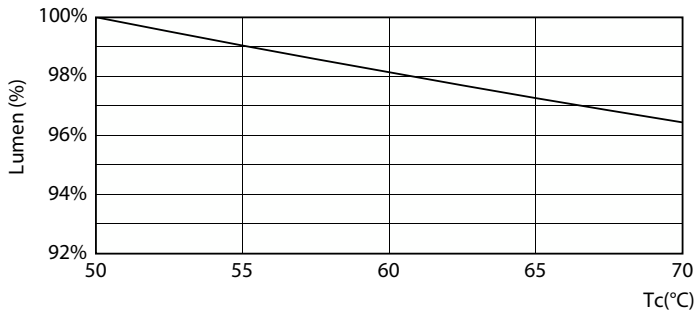
Spectral Power Distribution Colour - MAS LEDtube HF 1200mm HO 26W 865 T5 OE



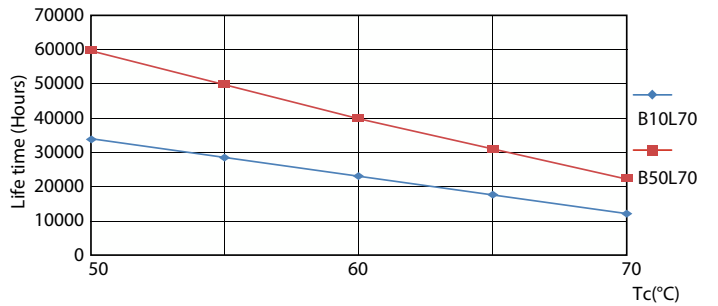
Standard Parameters (1) | High Lighting (2) | Page 1/1

General uniform lighting - MAS LEDtube HF 1200mm HO 26W 865 T5 OE

## Lifetime



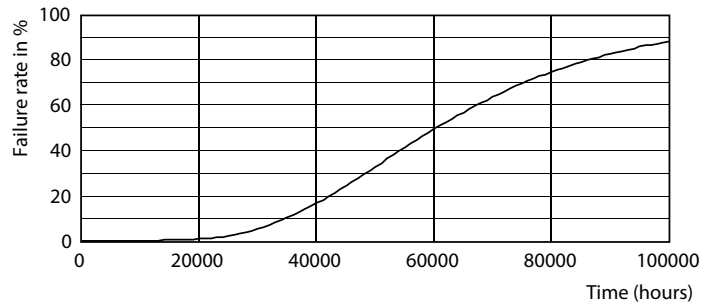
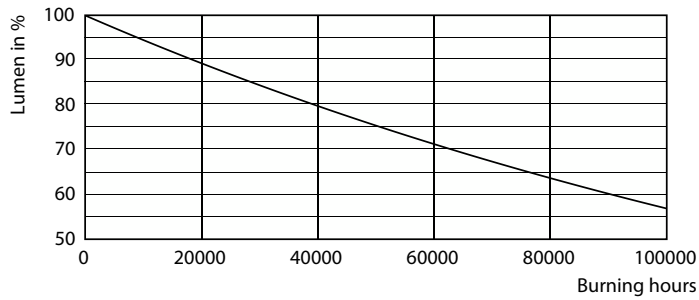
Lumen Maintenance Diagram - MAS LEDtube HF 1200mm HO 26W 865 T5 OE



LEDtube 60K 5070 LifetimeVsTc-LED

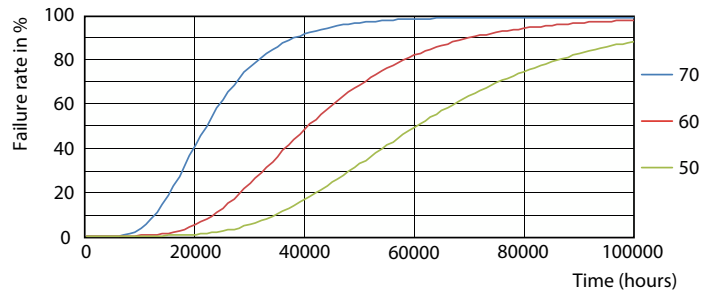
# MASTER LED tube InstantFit HF T5

## Lifetime



Lumen Maintenance Diagram - MAS LEDtube HF 1200mm HO 26W 865 T5 OE

Life Expectancy Diagram



LEDtube 60K 5070 FailureRate-LED

