



MASTER LED tube InstantFit HF T5



MAS LEDtube HF 1200mm HO 26W 840 T5 OE

MASTER, LEDtube, T5, HF, 1200 mm, 26 W, 54W TL5 HO, 4000 K, 3900 lm, CRI 80, 60000 h

The Philips MASTER LEDtube integrates an LED light source into a traditional fluorescent form factor. Its unique design creates a perfectly uniform visual appearance, which cannot be distinguished from traditional fluorescents. These T5 lighting tubes are the right choice for absolute performance and are designed to stand up to everyday conditions. Unparalleled savings, thanks to low energy consumption and an exceptionally long lifetime, make these T5 LED tubes the choice for every demanding applications.

Product data

General Information		Luminous efficacy (rated) (nom.)	
Cap base	G5		150 lm/W
Nominal lifetime	60,000 h	Colour consistency	<6
Switching Cycle	50,000	Colour rendering index (CRI)	80
Lighting Technology	LEDtube	LLMF at end of nominal lifetime (nom.)	70 %
Flux measurement reference	Sphere	Photobiological safety according to EN 62471	RG0
Warranty period	5 years		
Light Technical		Operating and Electrical	
Colour Code	840 [CCT of 4000K]	Line Frequency	30K to 60K Hz
Beam angle (nom.)	200 degree(s)	Input frequency	30 K to 60 K Hz
Luminous Flux	3,900 lm	Power Consumption	26 W
Colour designation	Cool White (CW)	Lamp current (max.)	620 mA
Correlated Colour Temperature (Nom)	4000 K	Lamp current (min.)	300 mA
		Starting time (nom.)	0.5 s
		Warm-up time to 60% light	0.5 s

MASTER LED tube InstantFit HF T5

Power Factor (Fraction)	0.92
Voltage (nom.)	20-90 V
LED alternative to fluorescent lamp power	54W TL5 HO
Inrush current at mains	-
Max. lamp no. on MCB B type 10A – Mains	-
Max. lamp no. on MCB B type 10A – EM ballast without Compensation Capacitor.	-
Max. lamp no. on MCB B type 10A – EM ballast with Compensation Capacitor.	-
Max. lamp no. on MCB B type 16A – Mains	-
Max. lamp no. on MCB B type 16A – EM ballast without Compensation Capacitor.	-
Max. lamp no. on MCB B type 16A – EM ballast with Compensation Capacitor.	-
Ballast Compatibility	HF

Temperature

T-Case maximum (nom.)	50 °C
-----------------------	-------

Controls and Dimming

Dimmable	Yes – Check ballast compatibility
----------	-----------------------------------

Mechanical and Housing

Lamp Finish	Frosted
Bulb material	Glass
Product length	1,200 mm
Bulb shape	T5

Net Weight (Piece)	0.160 kg
--------------------	----------

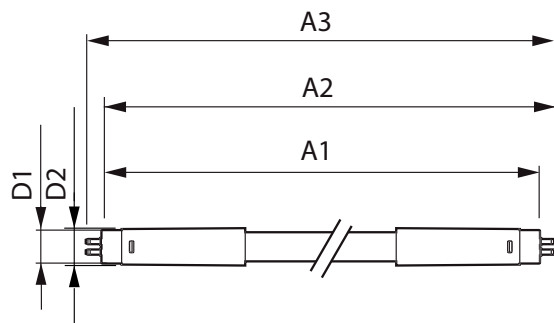
Approval and Application

Energy Efficiency Class	D
Energy-saving product	Yes
Approval marks	RoHS compliance KEMA Keur certificate
Energy consumption kWh/1,000 hours	26 kWh
EPREL Registration Number	1384141
CE mark	Yes
EU RoHS compliant	Yes
Ambient temperature range	-20°C to 45°C

Product Data

Order product name	MAS LEDtube HF 1200mm HO 26W 840 T5 OE
Full product name	MAS LEDtube HF 1200mm HO 26W 840 T5 OE
Full EOC	871869974953800
Order code	929002352102
Material no. (12 NC)	929002352102
Numerator – quantity per pack	1
EAN/UPC – Product/Case	8718699749538
Numerator – packs per outer box	10
EAN/UPC – Case	8718699749545

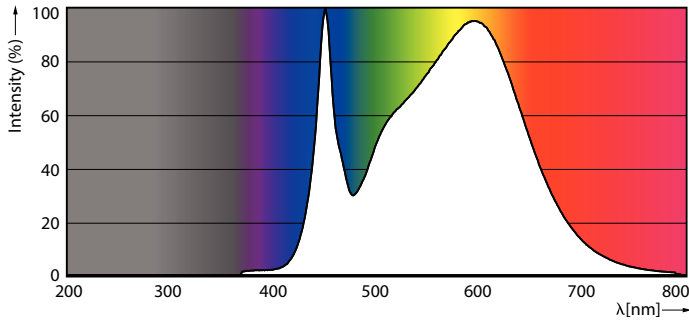
Dimensional drawing



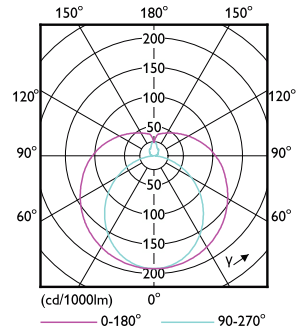
Product	D1	D2	A1	A2	A3
MAS LEDtube HF 1200mm HO 26W 840 T5 OE	15.5 mm	19 mm	1,149 mm	1,156 mm	1,163 mm

MASTER LED tube InstantFit HF T5

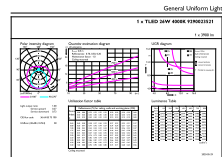
Photometric data



Spectral Power Distribution Colour - MAS LEDtube HF 1200mm HO 26W 840 T5 OE

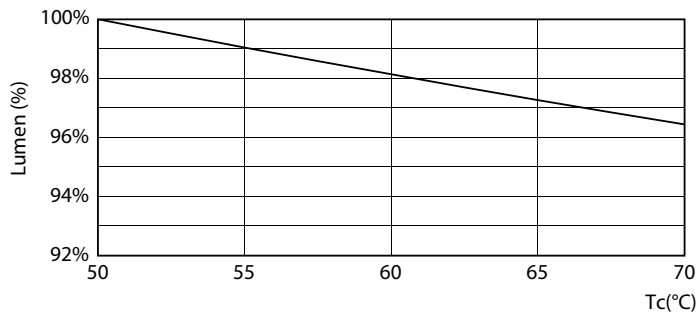


Light Distribution Diagram - MAS LEDtube HF 1200mm HO 26W 840 T5 OE

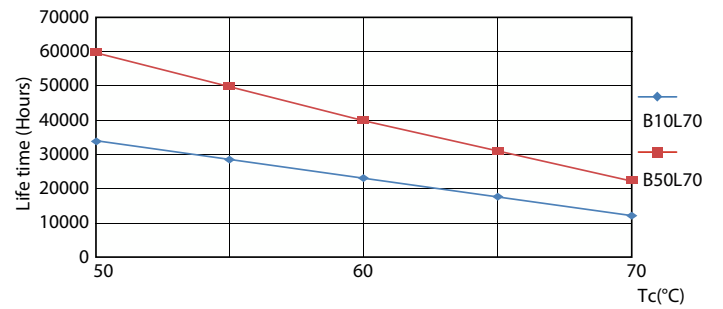


General uniform lighting - MAS LEDtube HF 1200mm HO 26W 840 T5 OE

Lifetime



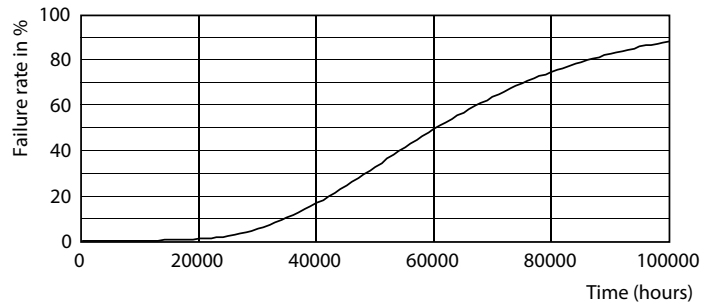
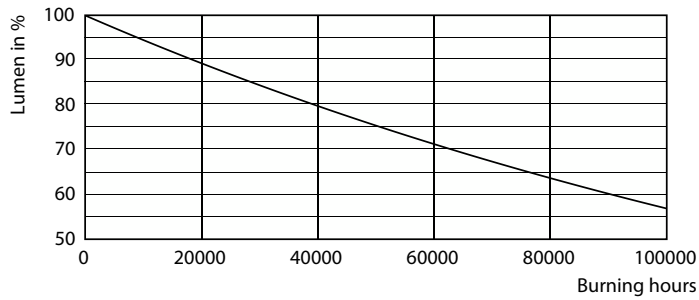
Lumen Maintenance Diagram - MAS LEDtube HF 1200mm HO 26W 840 T5 OE



LEDtube 60K 5070 LifetimeVsTc-LED

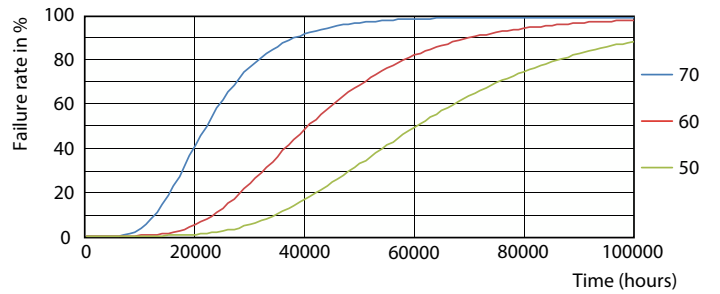
MASTER LED tube InstantFit HF T5

Lifetime



Lumen Maintenance Diagram - MAS LEDtube HF 1200mm HO 26W 840 T5 OE

Life Expectancy Diagram



LEDtube 60K 5070 FailureRate-LED

