



SmartBright LED Downlight DN016

DN016B LED12/WW 15W 127V D125 RD DIM

SmartBright LED Downlight DN016, 15 W, 1200 lm, 3000 K, Wide beam, White

Providing robust & reliable performance. Bright Light with uniform distribution.

Product data

| General Information | |
|------------------------------------|----------------|
| Light source replaceable | No |
| Number of gear units | 1 unit |
| Driver included | Yes |
| Lighting Technology | LED |
| Warranty period | 3 years |
| Light Technical | |
| Luminous Flux | 1,200 lm |
| Correlated Color Temperature (Nom) | 3000 K |
| Luminous Efficacy (rated) (Nom) | 80 lm/W |
| Color rendering index (CRI) | 80 |
| Light source color | 830 warm white |
| Optic type | Wide beam |
| Luminaire light beam spread | 110° |
| Operating and Electrical | |
| Input Voltage | 127 V |
| Line Frequency | 60 Hz |
| Input Frequency | 60 Hz |

| Inrush current | 13 A |
|---|----------------------------|
| Inrush time | 0.31 ms |
| Power Consumption | 15 W |
| Power Factor (Fraction) | 0.9 |
| Connection | Flying leads/wires |
| Cable | Cable 0.2 m without plug |
| Number of products on MCB of 16 A type B 31 | |
| Suitable for random switching | Not applicable |
| Protection class IEC | Safety class I |
| Controls and Dimming | |
| Dimmable | Yes |
| Driver/power unit/transformer | Power supply unit (On/Off) |
| Constant light output | No |
| Maximum dim level | 10% |
| Mechanical and Housing | |
| Housing Material | Plastic |
| Reflector material | - |
| Optic material | Polycarbonate |

SmartBright LED Downlight DN016

| | |
|------------------------------|-------------------------|
| Optical cover material | Polycarbonate |
| Fixation material | Aluminum |
| Housing Color | White |
| Optical cover finish | Matte |
| Overall height | 47 mm |
| Overall diameter | 168 mm |
| Ingress protection code | IP20 [Finger-protected] |
| Mech. impact protection code | IK03 [0.3 J] |
| Net Weight (Piece) | 0.206 kg |

Approval and Application

| | |
|---------------------------|---|
| Glow-wire test | Temperature 650 °C, duration 30 s |
| Flammability mark | For mounting on normally flammable surfaces |
| EU RoHS compliant | Yes |
| Ambient temperature range | -20 to +40 °C |

Initial Performance (IEC Compliant)

| | |
|-------------------------|--------|
| Luminous flux tolerance | +/-10% |
|-------------------------|--------|

| | |
|-----------------------------|-----------------------|
| Initial chromaticity | (0.440, 0.4030) 6SDCM |
| Power consumption tolerance | +/-10% |

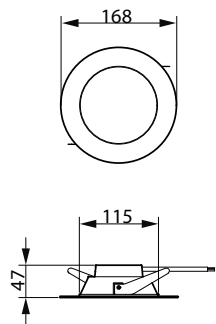
Over Time Performance (IEC Compliant)

| | |
|-------------------------------|----------------|
| Driver failure rate at 5000 h | 0.012 % |
| Median useful life L70B50 | 30,000 hour(s) |

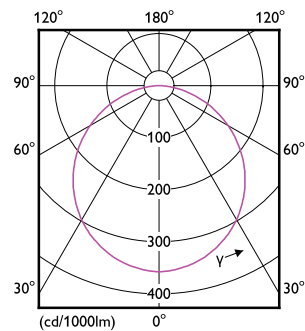
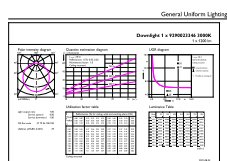
Product Data

| | |
|---------------------------------|--------------------------------------|
| Order product name | DN016B LED12/WW 15W 127V D125 RD DIM |
| Full product name | DN016B LED12/WW 15W 127V D125 RD DIM |
| Order code | 929002334612 |
| Material Nr. (12NC) | 929002334612 |
| Numerator - Quantity Per Pack | 1 |
| EAN/UPC - Product/Case | 046677557775 |
| Numerator - Packs per outer box | 12 |
| EAN/UPC - Case | 50046677557770 |

Dimensional drawing



Photometric data



General uniform lighting - DN016B LED12/WW 15W 127V D125 RD DIM

Light Distribution Diagram - DN016B LED12/WW 15W 127V D125 RD DIM

SmartBright LED Downlight DN016

