



MASTER VALUE LED spot MV



MAS LED spot VLE D 650lm GU10 930 120D

MASTER Value, LEDspot, PAR16, GU10, 3000 K, 650 lm, CRI 90, 25000 h

MASTER Value, LEDspot, PAR16, GU10, 3000 K, 650 lm, CRI 90, 25000 h, 104.00 lm/W, EEL F, PF 0.88, RG1, IP20, SVM 0.4, PstLM 1

Warnings and Safety

- Operating temperature range is between -20° C and 45° C ambient
- Only to apply in dry or damp locations and most of open fixtures with lamp-holders that offer sufficient space (10 mm free air space)
- Not intended for use with emergency light fixtures or exit lights

Product data

General Information	
Cap base	GU10
Nominal lifetime	25,000 h
Switching Cycle	50,000
Lighting Technology	LEDspot
Flux measurement reference	Sphere
Warranty period	5 years

Light Technical	
Colour Code	930 [CCT of 3000K]
Beam angle (nom.)	120 degree(s)
Luminous Flux	650 lm
Luminous intensity (nom.)	200 cd

Colour designation	White (WH)
Correlated Colour Temperature (Nom)	3000 K
Luminous efficacy (rated) (nom.)	104.00 lm/W
Colour consistency	<6
Colour rendering index (CRI)	90
LLMF at end of nominal lifetime (nom.)	70 %
Photobiological safety according to EN 62471	RG1

Operating and Electrical	
Line Frequency	50 to 60 Hz
Input frequency	50 to 60 Hz
Power Consumption	6.2 W
Lamp current (nom.)	33 mA

MASTER VALUE LED spot MV

Starting time (nom.)	0.5 s
Warm-up time to 60% light	0.5 s
Power Factor (Fraction)	0.88
Voltage (nom.)	220-240 V

Temperature	
T-Case maximum (nom.)	80 °C

Controls and Dimming	
Dimmable	Only with specific dimmers

Mechanical and Housing	
Bulb shape	PAR16
Net Weight (Piece)	0.038 kg

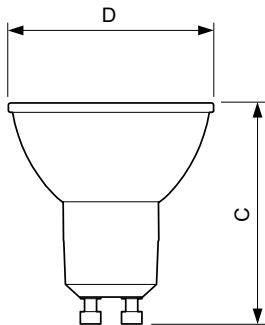
Approval and Application	
Energy Efficiency Class	F
Suitable for accent lighting	No
Energy consumption kWh/1,000 hours	7 kWh
EPREL Registration Number	391917
EU RoHS compliant	Yes
EyeComfort	Yes

Flickering value (PstLM)	1
Stroboscopic effect	0.4
Ambient temperature range	-20 to +45 °C

Application Conditions	
Wireless Technology	Not applicable

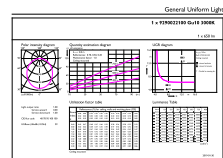
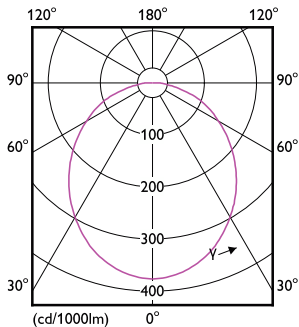
Product Data	
Order product name	MAS LED spot VLE D 650lm GU10 930 120D
Full product name	MAS LED spot VLE D 650lm GU10 930 120D
Full EOC	871869970609800
Order code	929002210002
Material no. (12 NC)	929002210002
Numerator – quantity per pack	1
EAN/UPC – Product/Case	8718699706098
Numerator – packs per outer box	10
EAN/UPC - Case	8718699706531

Dimensional drawing



Product	D	C
MAS LED spot VLE D 650lm GU10 930 120D	50 mm	54 mm

Photometric data



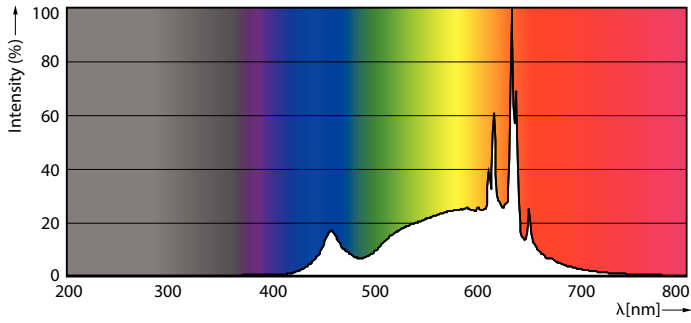
002027 Photometric 11 11/2019 Lighting 11 Page 1/1

Light Distribution Diagram - MAS LED spot VLE D 650lm GU10 930 120D

Accent Lighting Spots - MAS LED spot VLE D 650lm GU10 930 120D

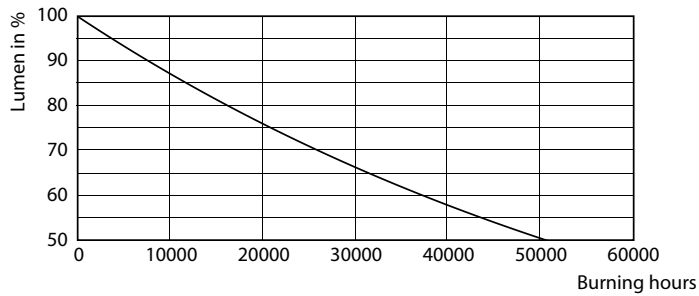
MASTER VALUE LED spot MV

Photometric data

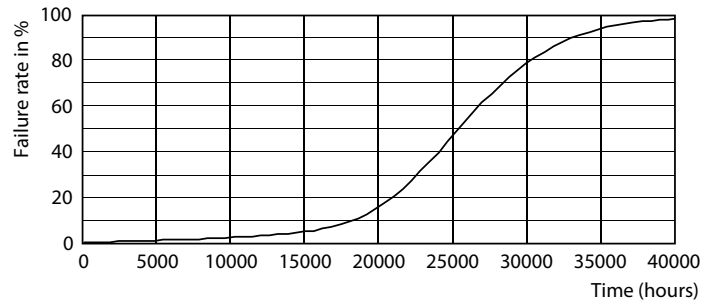


Spectral Power Distribution Colour - MAS LED spot VLE D 650lm GU10 930 120D

Lifetime



Lumen Maintenance Diagram - MAS LED spot VLE D 650lm GU10 930 120D



25K LED

