



MASTER Value LED tube EM/Mains T8

MAS LEDtube VLE 1500mm HO 20.5W 865 T8

MASTER Value, LEDtube, T8, EM/Mains, 1500 mm, 220-240 V, 20.5 W, 58W TL-D, 6500 K, 3100 lm, CRI 80, 60000 hour(s)

A high-performance LED solution, the professional MASTER Value LED tube is ideal for replacing T8 fluorescent lamps using EM ballast or installing directly on the mains. This product provides an optimal combination of value and performance – for use in all general lighting, office, industry, retail, and hospitality applications. The unique design of this LED T8 tube light offers wide compatibility, safety and fast installation, as well as instant energy savings.

Product data

General Information		Color rendering index (CRI)	
Cap-Base	G13		80
Nominal lifetime	60,000 hour(s)	LLMF At End Of Nominal Lifetime (Nom)	70 %
Switching Cycle	200,000	Photobiological safety according to EN 62471	RG0
Lighting Technology	LEDtube	Operating and Electrical	
Flux measurement reference	Sphere	Line Frequency	50 to 60 Hz
Light Technical		Input Frequency	50 to 60 Hz
Color Code	865 [CCT of 6500K]	Power Consumption	20.5 W
Beam Angle (Nom)	190 degree(s)	Lamp Current (Max)	97 mA
Luminous Flux	3,100 lm	Lamp Current (Min)	89 mA
Color Designation	Cool Daylight	Starting Time (Nom)	0.5 s
Correlated Color Temperature (Nom)	6500 K	Warm-up time to 60% light	0.5 s
Luminous Efficacy (rated) (Nom)	151 lm/W	Power Factor (Fraction)	0.9
Color Consistency	<6	Voltage (Nom)	220-240 V
		LED alternative to fluorescent lamp power	58W TL-D

MASTER Value LED tube EM/Mains T8

Inrush current at mains	8.2
Max. lamp no. on MCB B type 10A - Mains	75
Max. lamp no. on MCB B type 10A – EM ballast without Compensation Capacitor.	75
Max. lamp no. on MCB B type 10A – EM ballast with Compensation Capacitor.	10
Max. lamp no. on MCB B type 16A - Mains	120
Max. lamp no. on MCB B type 16A – EM ballast without Compensation Capacitor.	120
Max. lamp no. on MCB B type 16A – EM ballast with Compensation Capacitor.	16
Ballast Compatibility	EM/Mains

Temperature

T-Case Maximum (Nom)	65 °C
----------------------	-------

Controls and Dimming

Dimmable	No
----------	----

Mechanical and Housing

Bulb Finish	Frosted
Bulb Material	Glass
Product Length	1,500 mm
Bulb Shape	T8
Net Weight (Piece)	0.270 kg

Approval and Application

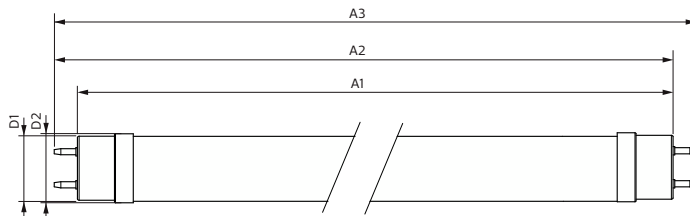
Energy Efficiency Class	D
-------------------------	---

Energy Saving Product	Yes
Approval Marks	RoHS compliance TUV CE marking KEMA Keur certificate
Energy Consumption kWh/1000 h	21 kWh
EPREL Registration Number	1095870
CE mark	Yes
EU RoHS compliant	Yes
Flickering value (PstLM) - Flickering value as per EN 61000-3-3	1
Stroboscopic effect visibility measure (SVM)	0.4
Ambient temperature range	-20 °C to 45 °C

Product Data

Order product name	MAS LEDtube VLE 1500mm HO 20.5W 865 T8
Full product name	MAS LEDtube VLE 1500mm HO 20.5W 865 T8
Full product code	871869964695000
Order code	929002021902
Material Nr. (12NC)	929002021902
Numerator - Quantity Per Pack	1
EAN/UPC - Product/Case	8718699646950
Numerator - Packs per outer box	10
EAN/UPC - Case	8718699646967

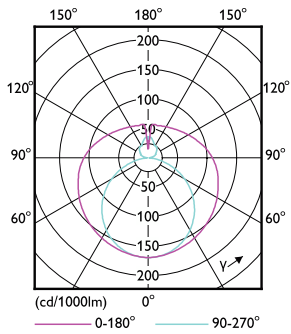
Dimensional drawing



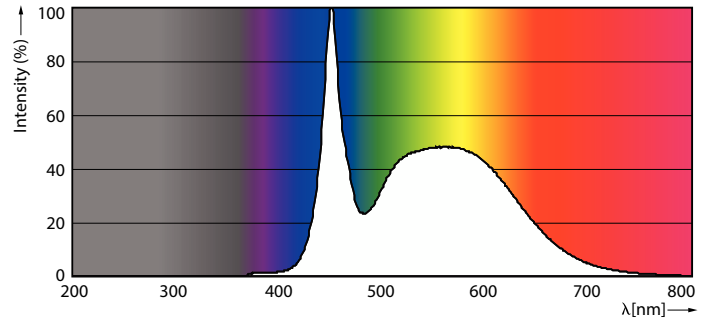
Product	D1	D2	A1	A2	A3
MAS LEDtube VLE 1500mm HO 20.5W 865 T8	25.8 mm	28 mm	1,498.7 mm	1,505.8 mm	1,512.9 mm

MASTER Value LED tube EM/Mains T8

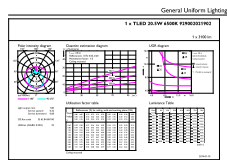
Photometric data



Light Distribution Diagram - MAS LEDtube VLE 1500mm HO 20.5W 865 T8

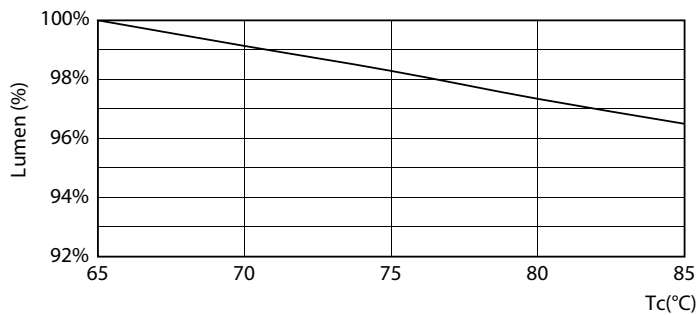


Spectral Power Distribution Colour - MAS LEDtube VLE 1500mm HO 20.5W 865 T8

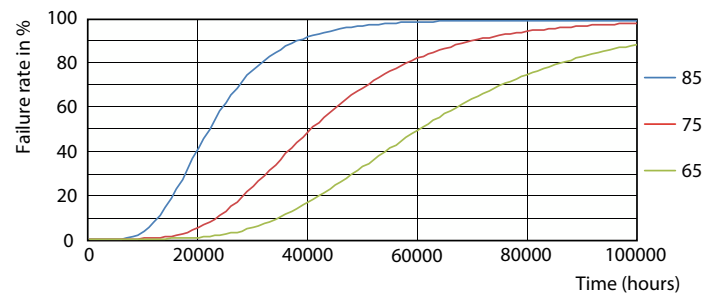


General uniform lighting - MAS LEDtube VLE 1500mm HO 20.5W 865 T8

Lifetime



Lumen Maintenance Diagram - MAS LEDtube VLE 1500mm HO 20.5W 865 T8



FailureRate

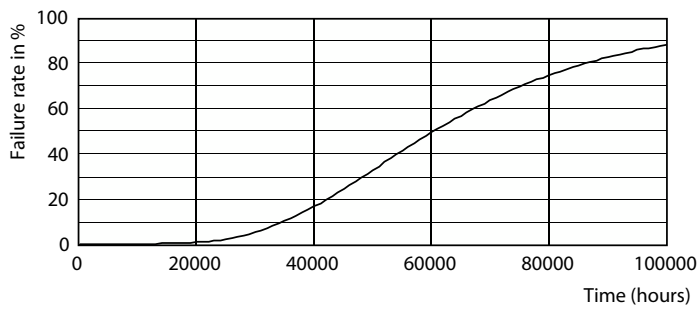
MASTER Value LED tube EM/Mains T8

Lifetime



LifetimeVsTc

Lumen Maintenance Diagram - MAS LEDtube VLE 1500mm HO 20.5W 865 T8



Life Expectancy Diagram

