



CorePro LED tube EM/ Mains T8

CorePro LEDtube 600mm 8.6W 840 T8 KSA

CorePro, LEDtube, T8, Mains, 600 mm, 220-240 V, 8.6 W, 18W TL-D, 4000 K, 950 lm, 30000 hour(s)

Philips CorePro LEDtubes are the quick and easy way to replace T8 fluorescent or other LED tubes with a fast pay back time. Not only does the Core range of LEDtubes require a low initial investment, but LED energy efficiency also delivers instant savings that you can bank on over a long and reliable lifetime. Plus, with the same lamp size and light distribution as fluorescent alternatives, you'll never know the difference. There are two ways to install these LED tubes: Rewire your existing fluorescent-based luminaires so the CorePro LEDtubes work directly on the Mains. Or simply change the fluorescent starter to an LED starter that can be used with your Electromagnetic ballasts.

Warnings and Safety

- NOTE: The overall energy efficiency and light distribution of any installation that uses these lamps will be determined by the design of the installation.
- Installation must be done according to the installation diagrams provided with the lamp or available online. Installation must be done by a certified professional.

Product data

General Information		Light Technical	
Cap-Base	G13	Color Code	840 [CCT of 4000K]
Nominal lifetime	30,000 hour(s)	Beam Angle (Nom)	240 degree(s)
Switching Cycle	50,000	Luminous Flux	950 lm
Lighting Technology	LEDtube	Color Designation	Cool White (CW)
		Correlated Color Temperature (Nom)	4000 K

CorePro LED tube EM/Mains T8

Luminous Efficacy (rated) (Nom)	110 lm/W
Color Consistency	<6
Color rendering index (CRI)	80
LLMF At End Of Nominal Lifetime (Nom)	70 %
Photobiological safety according to EN 62471	RG0

Operating and Electrical

Input Frequency	50 to 60 Hz
Power Consumption	8.6 W
Lamp Current (Nom)	40 mA
Wattage Equivalent	18 W
Starting Time (Nom)	0.5 s
Warm-up time to 60% light	0.5 s
Power Factor (Fraction)	0.92
Voltage (Nom)	220-240 V
LED alternative to fluorescent lamp power	18W TL-D
Ballast Compatibility	Mains

Temperature

T-Case Maximum (Nom)	55 °C
----------------------	-------

Controls and Dimming

Dimmable	No
----------	----

Mechanical and Housing

Product Length	600 mm
----------------	--------

Bulb Shape	T8
Net Weight (Piece)	0.095 kg

Approval and Application

Energy Saving Product	Yes
Approval Marks	RoHS compliance KEMA Keur certificate
EU RoHS compliant	Yes
Ambient temperature range	-20 to +45 °C

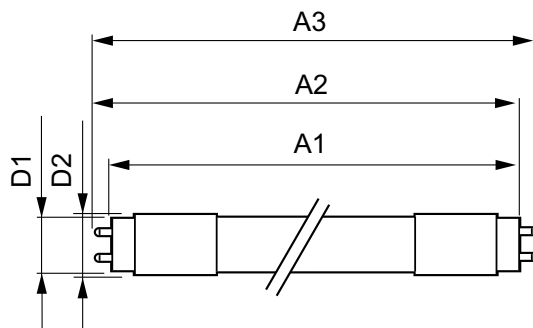
Application Conditions

Wireless Technology	Not applicable
---------------------	----------------

Product Data

Order product name	CorePro LEDtube 600mm 8.6W 840 T8 KSA
Full product name	CorePro LEDtube 600mm 8.6W 840 T8 KSA
Full product code	872016934578200
Order code	929002000468
Material Nr. (12NC)	929002000468
Numerator - Quantity Per Pack	1
EAN/UPC - Product/Case	8720169345782
Numerator - Packs per outer box	25
EAN/UPC - Case	8720169345799

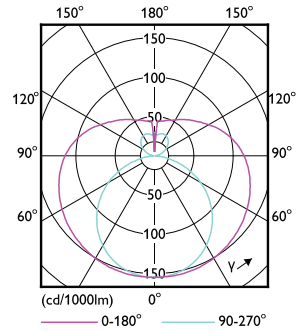
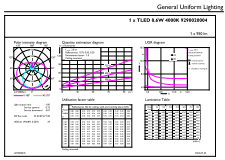
Dimensional drawing



Product	D1	D2	A1	A2	A3
CorePro LEDtube 600mm 8.6W 840 T8 KSA	25.6 mm	27.8 mm	589.8 mm	595.7 mm	604 mm

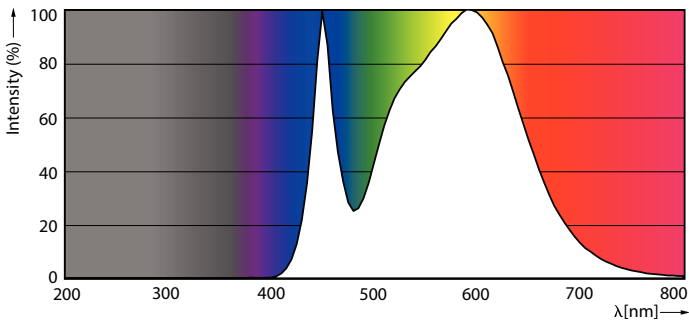
CorePro LED tube EM/Mains T8

Photometric data



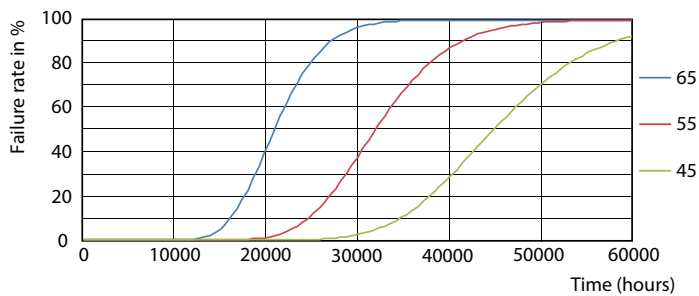
General uniform lighting - CorePro LEDtube 600mm 8.6W 840 T8 KSA

Light Distribution Diagram - CorePro LEDtube 600mm 8.6W 840 T8 KSA

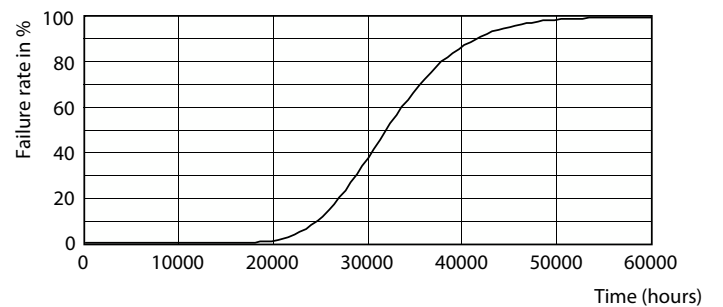


Spectral Power Distribution Colour - CorePro LEDtube 600mm 8.6W 840 T8 KSA

Lifetime



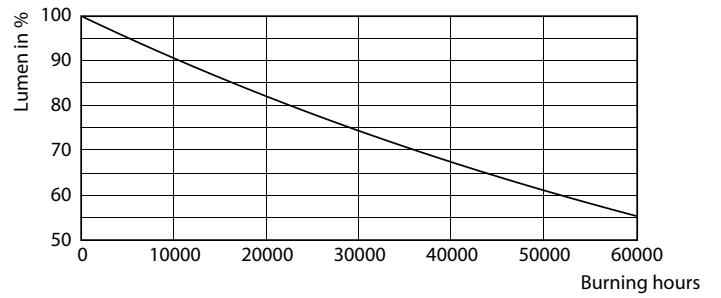
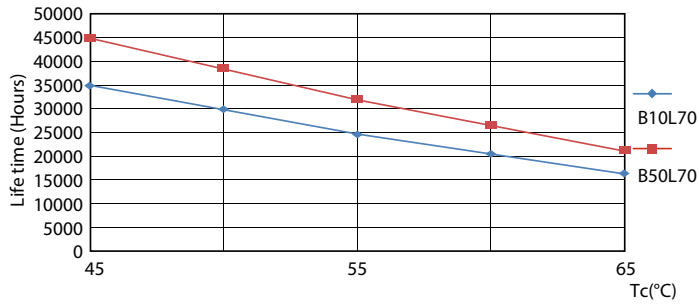
FailureRate



Life Expectancy Diagram

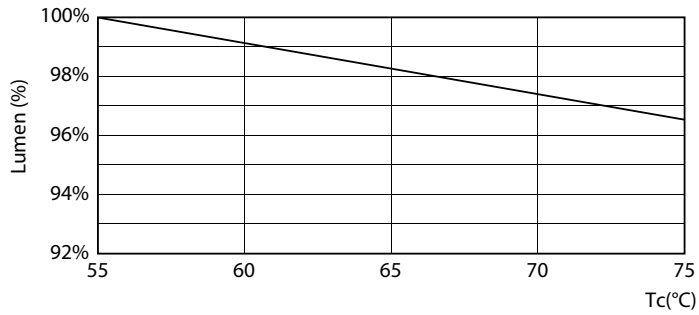
CorePro LED tube EM/Mains T8

Lifetime



LifetimeVsTc

Lumen Maintenance Diagram - CorePro LEDtube 600mm 8.6W 840 T8 KSA



Lumen Maintenance Diagram - CorePro LEDtube 600mm 8.6W 840 T8 KSA

