

# Contractor Grade LED tube T8

## COR CNG LEDtube HO 1200mm 18W 865 T8 I

CorePro, LEDtube, T8, Mains, Single-end, 1200 mm, 100-240 V, 18 W, 32-36W TL-D, 6500 K, 2100 lm, 30000 hour(s)

Philips Contractor Grade LEDtubes are the quick and easy way to replace T8 fluorescent or other LED tubes with a fast pack back time. Not only does the range of LEDtubes require a low initial investment, but LED energy efficiency also delivers instant savings that you can bank on over a long and reliable lifetime. Plus, with the same lamp size and light distribution as fluorescent alternatives, you'll never know the difference. You don't need to pay attention to the driver technology anymore, Contractor Grade LEDtube installs in luminaires operating on mains power connection. So simple to operate!

### Product data

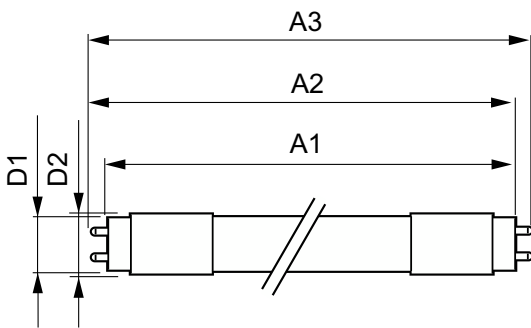
General Information		Color Consistency	
Cap-Base	G13	Color rendering index (CRI)	80
Nominal lifetime	30,000 hour(s)	LLMF At End Of Nominal Lifetime (Nom)	0.7 %
Switching Cycle	50,000	Photobiological safety according to EN 62471	RG0
Lighting Technology	LEDtube		
Light Technical		Operating and Electrical	
Color Code	865 [CCT of 6500K]	Input Frequency	50 to 60 Hz
Beam Angle (Nom)	240 degree(s)	Power Consumption	18 W
Luminous Flux	2,100 lm	Lamp Current (Nom)	134.72 mA
Color Designation	Cool Daylight	Wattage Equivalent	36 W
Correlated Color Temperature (Nom)	6500 K	Starting Time (Nom)	0.5 s
Luminous Efficacy (rated) (Nom)	116 lm/W	Warm-up time to 60% light	0.5 s
		Power Factor (Fraction)	0.92

# Contractor Grade LED tube T8

Voltage (Nom)	100-240 V
LED alternative to fluorescent lamp power	32-36W TL-D
Ballast Compatibility	Mains
<b>Temperature</b>	
T-Case Maximum (Nom)	65 °C
<b>Controls and Dimming</b>	
Dimmable	No
<b>Mechanical and Housing</b>	
Product Length	1,200 mm
Bulb Shape	T8
Net Weight (Piece)	0.220 kg
<b>Approval and Application</b>	
Energy Saving Product	Yes
Approval Marks	RoHS compliance

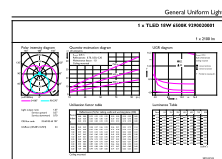
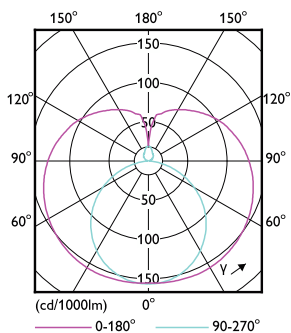
EU RoHS compliant	Yes
Ambient temperature range	-20 to +45 °C
<b>Product Data</b>	
Order product name	COR CNG LEDtube HO 1200mm 18W 865 T8 I
Full product name	COR CNG LEDtube HO 1200mm 18W 865 T8 I
Full product code	872110303548600
Order code	929002000108
Material Nr. (12NC)	929002000108
Numerator - Quantity Per Pack	1
EAN/UPC - Product/Case	8721103035486
Numerator - Packs per outer box	25
EAN/UPC - Case	8721103035493

## Dimensional drawing



Product	D1	D2	A1	A2	A3
COR CNG LEDtube HO 1200mm 18W 865 T8 I	25.6 mm	27.8 mm	1,199.4 mm	1,205.3 mm	1,213.6 mm

## Photometric data

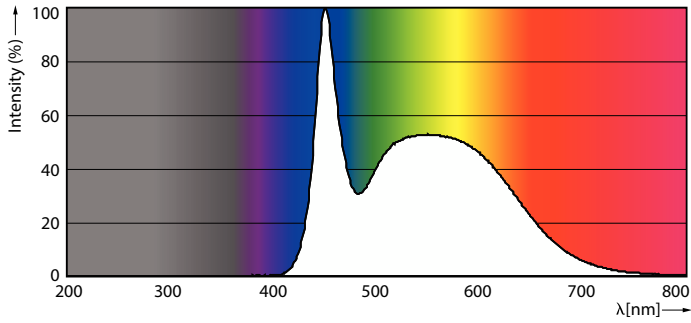


Light Distribution Diagram - COR CNG LEDtube HO 1200mm 18W 865 T8 I

General uniform lighting - COR CNG LEDtube HO 1200mm 18W 865 T8 I

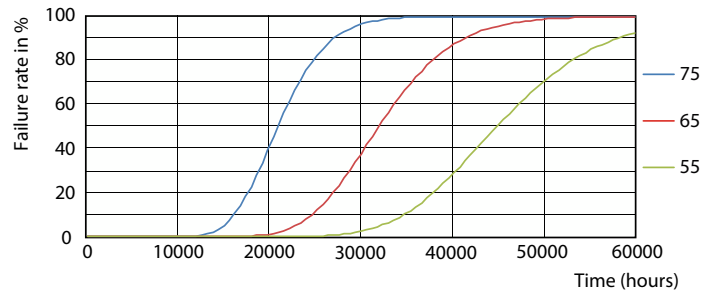
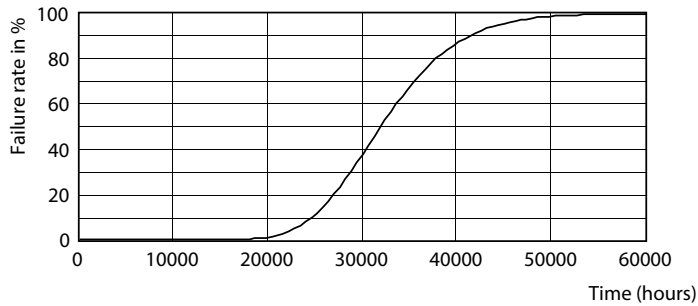
# Contractor Grade LED tube T8

## Photometric data

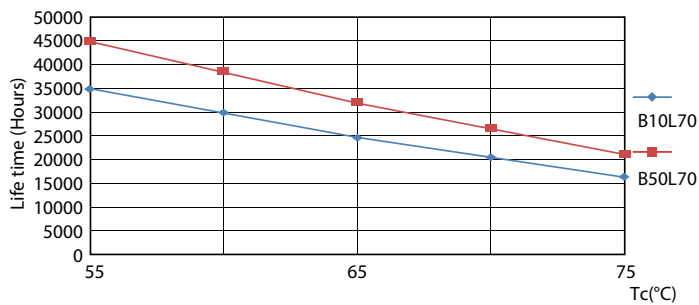


Spectral Power Distribution Colour - COR CNG LEDtube HO 1200mm 18W 865 T8 I

## Lifetime

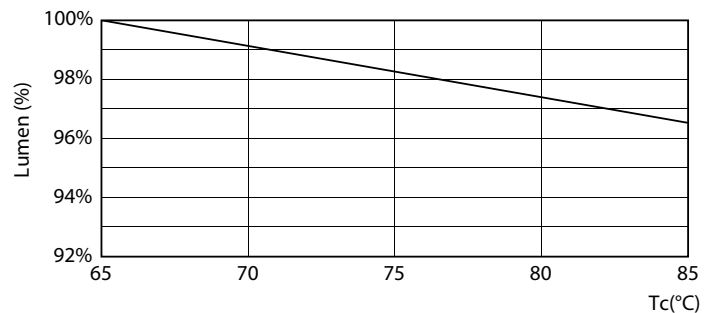


Life Expectancy Diagram



LifetimeVsTc

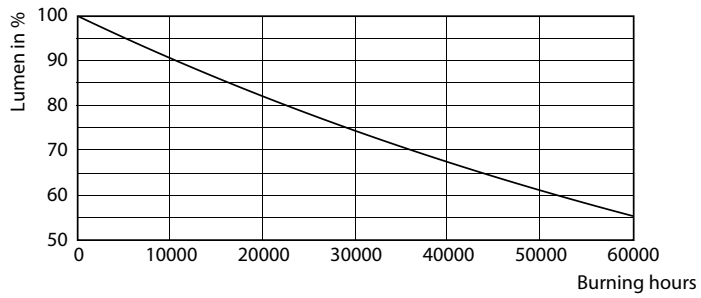
FailureRate



Lumen Maintenance Diagram - COR CNG LEDtube HO 1200mm 18W 865 T8 I

## Contractor Grade LED tube T8

### Lifetime



Lumen Maintenance Diagram - COR CNG LEDtube HO 1200mm 18W 865 T8 I

