



CorePro LED tube EM/ Mains T8

CorePro LEDtube 1200mm HO 18W840 C W G

CorePro, LEDtube, T8, Mains, 1200 mm, 100-240 V, 18 W, 32-36W TL-D, 4000 K, 2100 lm, 25000 hour(s)

Philips CorePro LEDtubes are the quick and easy way to replace T8 fluorescent or other LED tubes with a fast pack back time. Not only does the Core range of LEDtubes require a low initial investment, but LED energy efficiency also delivers instant savings that you can bank on over a long and reliable lifetime. Plus, with the same lamp size and light distribution as fluorescent alternatives, you'll never know the difference. There are two ways to install these LED tubes: Rewire your existing fluorescent-based luminaires so the CorePro LEDtubes work directly on the Mains. Or simply change the fluorescent starter to an LED starter that can be used with your Electromagnetic ballasts.

Warnings and Safety

- NOTE: The overall energy efficiency and light distribution of any installation that uses these lamps will be determined by the design of the installation.
- Installation must be done according to the installation diagrams provided with the lamp or available online. Installation must be done by a certified professional.

Product data

General Information		Warranty period	
Cap-Base	G13		3 years
Nominal lifetime	25,000 hour(s)	Light Technical	
Switching Cycle	50,000	Color Code	840 [CCT of 4000K]
Lighting Technology	LEDtube	Beam Angle (Nom)	240 degree(s)
		Luminous Flux	2,100 lm

CorePro LED tube EM/Mains T8

Color Designation	Cool White (CW)
Correlated Color Temperature (Nom)	4000 K
Luminous Efficacy (rated) (Nom)	116.00 lm/W
Color Consistency	<6
Color rendering index (CRI)	80
LLMF At End Of Nominal Lifetime (Nom)	70 %

Operating and Electrical

Line Frequency	50 to 60 Hz
Input Frequency	50 to 60 Hz
Power Consumption	18 W
Lamp Current (Max)	160 mA
Lamp Current (Min)	95 mA
Starting Time (Nom)	0.5 s
Warm-up time to 60% light	0.5 s
Power Factor (Fraction)	0.92
Voltage (Nom)	100-240 V
LED alternative to fluorescent lamp power	32-36W TL-D
Ballast Compatibility	Mains

Temperature

T-Case Maximum (Nom)	65 °C
----------------------	-------

Controls and Dimming

Dimmable	No
----------	----

Mechanical and Housing

Product Length	1,200 mm
----------------	----------

Bulb Shape	T8
Net Weight (Piece)	0.225 kg

Approval and Application

Energy Saving Product	Yes
Approval Marks	RoHS compliance
Energy Consumption kWh/1000 h	18 kWh
EU RoHS compliant	Yes
Ambient temperature range	-20 °C to 45 °C

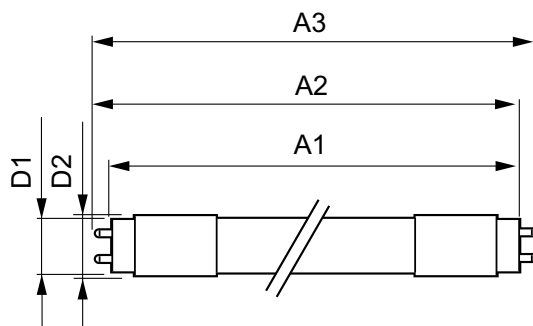
Application Conditions

Wireless Technology	Not applicable
---------------------	----------------

Product Data

Order product name	CorePro LEDtube 1200mm HO 18W840 C W G
Full product name	CorePro LEDtube 1200mm HO 18W840 C W G
Full product code	871869963761300
Order code	929002000072
Material Nr. (12NC)	929002000072
Numerator - Quantity Per Pack	1
EAN/UPC - Product/Case	8718699637613
Numerator - Packs per outer box	25
EAN/UPC - Case	8718699637620

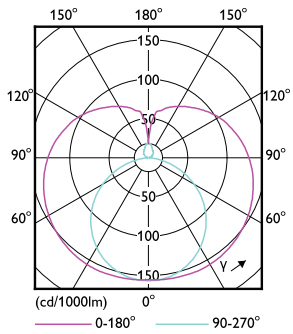
Dimensional drawing



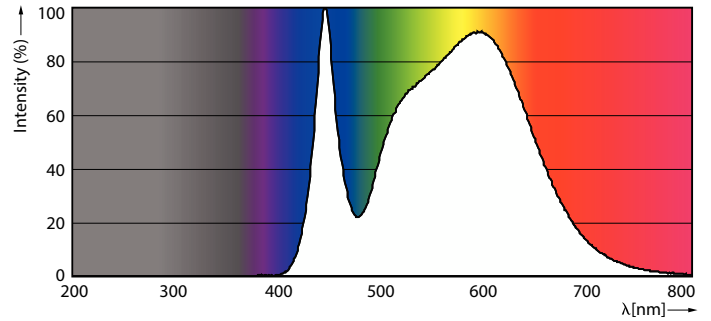
Product	D1	D2	A1	A2	A3
CorePro LEDtube 1200mm HO 18W840 C W G	25.6 mm	27.8 mm	1,199.4 mm	1,205.3 mm	1,213.6 mm

CorePro LED tube EM/Mains T8

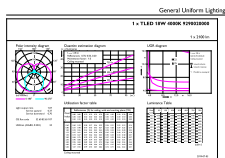
Photometric data



Light Distribution Diagram - CorePro LEDtube 1200mm HO 18W840 C W G



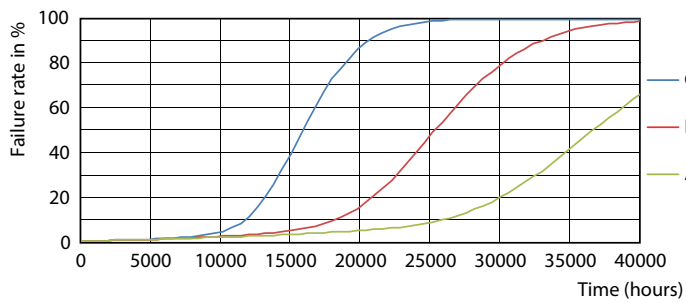
Spectral Power Distribution Colour - CorePro LEDtube 1200mm HO 18W840 C W G



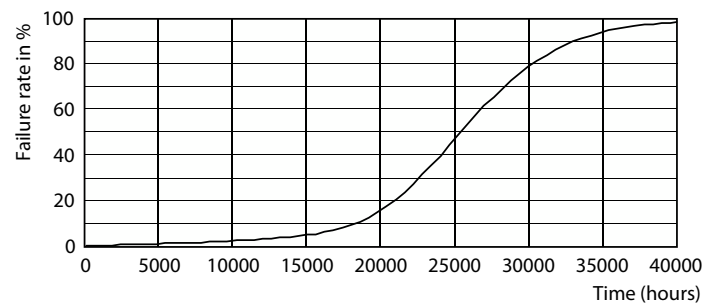
Technical Drawing 01 Page Lighting 01 Page 1/1

General uniform lighting - CorePro LEDtube 1200mm HO 18W840 C W G

Lifetime



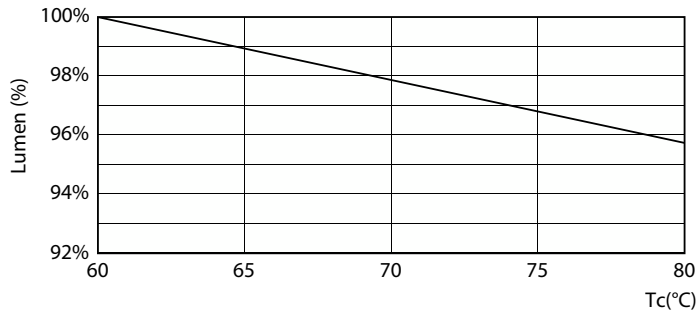
LEDtube 25K FailureRate



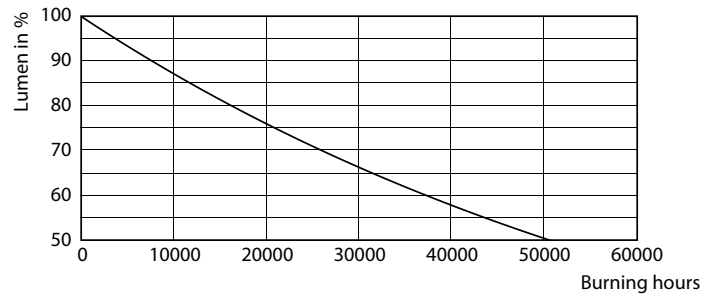
Life Expectancy Diagram

CorePro LED tube EM/Mains T8

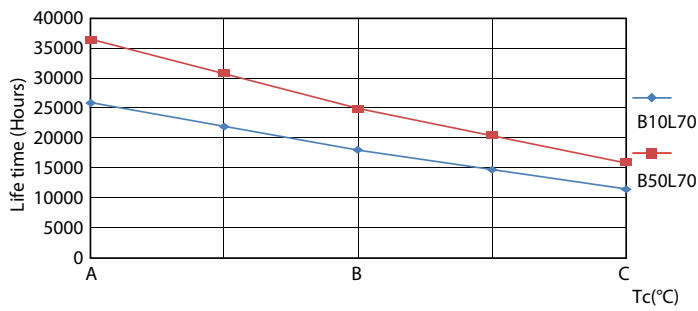
Lifetime



Lumen Maintenance Diagram - CorePro LEDtube 1200mm HO 18W840 C W G



Lumen Maintenance Diagram - CorePro LEDtube 1200mm HO 18W840 C W G



LEDtube 25K LifetimeVsTc

