



# Contractor Grade LED tube T8

## COR CNG LEDtube 1200mm 16W 865 T8 I

CorePro, LEDtube, T8, Mains, Single-end, 1200 mm, 127-240 V, 16 W, 32-36W TL-D, 6500 K, 1800 lm, 30000 hour(s)

Philips Contractor Grade LEDtubes are the quick and easy way to replace T8 fluorescent or other LED tubes with a fast pack back time. Not only does the range of LEDtubes require a low initial investment, but LED energy efficiency also delivers instant savings that you can bank on over a long and reliable lifetime. Plus, with the same lamp size and light distribution as fluorescent alternatives, you'll never know the difference. You don't need to pay attention to the driver technology anymore, Contractor Grade LEDtube installs in luminaires operating on mains power connection. So simple to operate!

### Product data

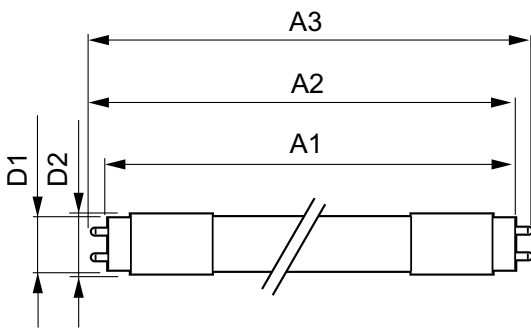
General Information		Color Consistency	
Cap-Base	G13	Color rendering index (CRI)	80
Nominal lifetime	30,000 hour(s)	LLMF At End Of Nominal Lifetime (Nom)	0.7 %
Switching Cycle	50,000	Operating and Electrical	
Lighting Technology	LEDtube	Input Frequency	50 to 60 Hz
Light Technical		Power Consumption	16 W
Color Code	865 [CCT of 6500K]	Lamp Current (Nom)	134.72 mA
Beam Angle (Nom)	240 degree(s)	Wattage Equivalent	36 W
Luminous Flux	1,800 lm	Starting Time (Nom)	0.5 s
Color Designation	Cool Daylight	Warm-up time to 60% light	0.5 s
Correlated Color Temperature (Nom)	6500 K	Power Factor (Fraction)	0.92
Luminous Efficacy (rated) (Nom)	112 lm/W	Voltage (Nom)	127-240 V

# Contractor Grade LED tube T8

LED alternative to fluorescent lamp power	32-36W TL-D
Ballast Compatibility	Mains
<b>Temperature</b>	
T-Case Maximum (Nom)	65 °C
<b>Controls and Dimming</b>	
Dimmable	No
<b>Mechanical and Housing</b>	
Product Length	1,200 mm
Bulb Shape	T8
Net Weight (Piece)	0.220 kg
<b>Approval and Application</b>	
Energy Saving Product	Yes
Approval Marks	RoHS compliance
EU RoHS compliant	Yes

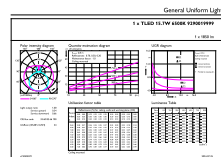
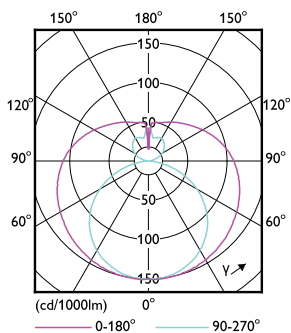
Ambient temperature range	-20 to +45 °C
<b>Application Conditions</b>	
Wireless Technology	Not applicable
<b>Product Data</b>	
Order product name	COR CNG LEDtube 1200mm 16W 865 T8 I
Full product name	COR CNG LEDtube 1200mm 16W 865 T8 I
Full product code	872110303544800
Order code	03544800
Material Nr. (12NC)	929001999908
Numerator - Quantity Per Pack	1
EAN/UPC - Product/Case	8721103035448
Numerator - Packs per outer box	25
EAN/UPC - Case	8721103035455

## Dimensional drawing



Product	D1	D2	A1	A2	A3
COR CNG LEDtube 1200mm 16W 865 T8 I	25.6 mm	27.8 mm	1,199.4 mm	1,205.3 mm	1,213.6 mm

## Photometric data

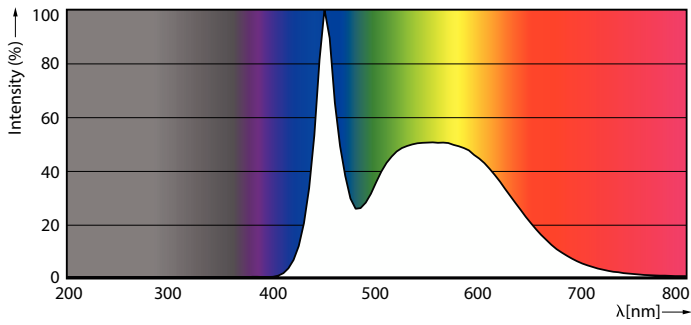


Light Distribution Diagram - COR CNG LEDtube 1200mm 16W 865 T8 I

General uniform lighting - COR CNG LEDtube 1200mm 16W 865 T8 I

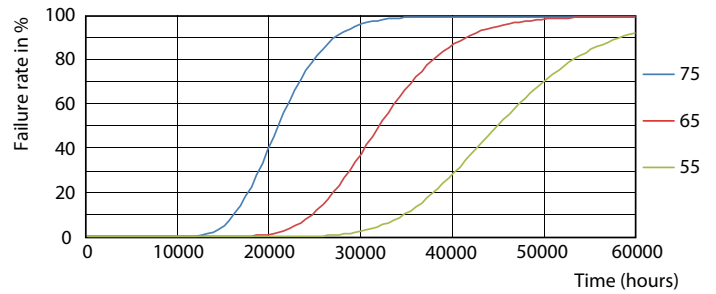
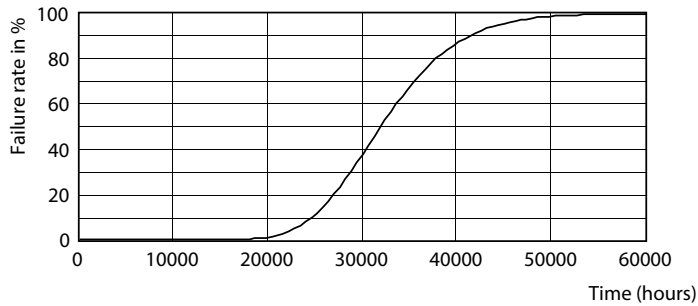
# Contractor Grade LED tube T8

## Photometric data

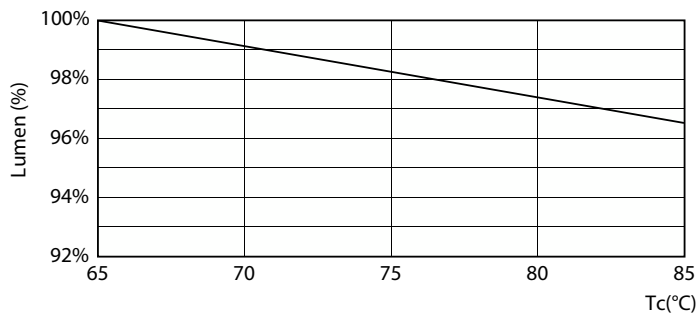


Spectral Power Distribution Colour - COR CNG LEDtube 1200mm 16W 865 T8 I

## Lifetime

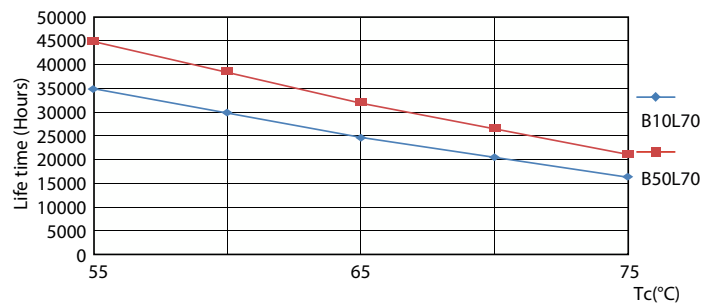


## Life Expectancy Diagram



Lumen Maintenance Diagram - COR CNG LEDtube 1200mm 16W 865 T8 I

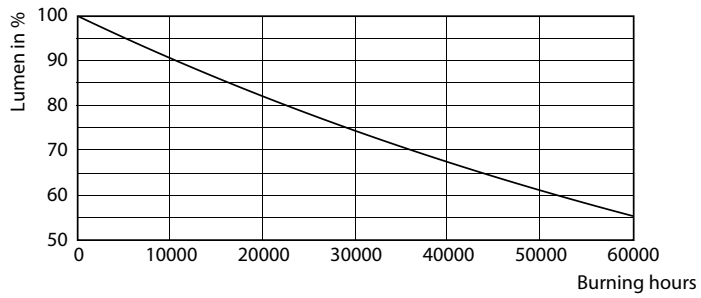
## FailureRate



LifetimeVsTc

## Contractor Grade LED tube T8

### Lifetime



Lumen Maintenance Diagram - COR CNG LEDtube 1200mm 16W 865 T8 I

