

Contractor Grade LED tube T8

COR CNG LEDtube 1200mm 16W 840 T8 I

CorePro, LEDtube, T8, Mains, Single-end, 1200 mm, 127-240 V, 16 W, 32-36W TL-D, 4000 K, 1800 lm, 30000 hour(s)

Philips Contractor Grade LEDtubes are the quick and easy way to replace T8 fluorescent or other LED tubes with a fast pack back time. Not only does the range of LEDtubes require a low initial investment, but LED energy efficiency also delivers instant savings that you can bank on over a long and reliable lifetime. Plus, with the same lamp size and light distribution as fluorescent alternatives, you'll never know the difference. You don't need to pay attention to the driver technology anymore, Contractor Grade LEDtube installs in luminaires operating on mains power connection. So simple to operate!

Product data

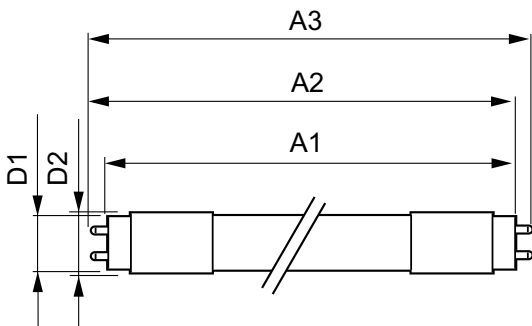
General Information		Color Consistency	
Cap-Base	G13	Color rendering index (CRI)	80
Nominal lifetime	30,000 hour(s)	LLMF At End Of Nominal Lifetime (Nom)	0.7 %
Switching Cycle	50,000		
Lighting Technology	LEDtube		
Light Technical		Operating and Electrical	
Color Code	840 [CCT of 4000K]	Input Frequency	50 to 60 Hz
Beam Angle (Nom)	240 degree(s)	Power Consumption	16 W
Luminous Flux	1,800 lm	Lamp Current (Nom)	134.72 mA
Color Designation	Cool White (CW)	Wattage Equivalent	36 W
Correlated Color Temperature (Nom)	4000 K	Starting Time (Nom)	0.5 s
Luminous Efficacy (rated) (Nom)	112 lm/W	Warm-up time to 60% light	0.5 s
		Power Factor (Fraction)	0.92
		Voltage (Nom)	127-240 V

Contractor Grade LED tube T8

LED alternative to fluorescent lamp power	32-36W TL-D
Ballast Compatibility	Mains
Temperature	
T-Case Maximum (Nom)	65 °C
Controls and Dimming	
Dimmable	No
Mechanical and Housing	
Product Length	1,200 mm
Bulb Shape	T8
Net Weight (Piece)	0.220 kg
Approval and Application	
Energy Saving Product	Yes

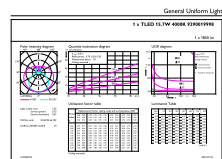
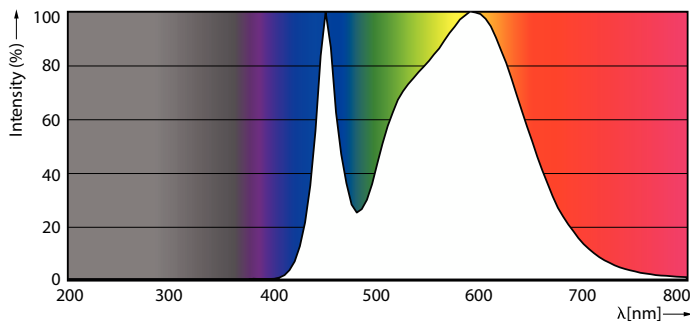
Approval Marks	RoHS compliance
EU RoHS compliant	Yes
Ambient temperature range	-20 to +45 °C
Product Data	
Order product name	COR CNG LEDtube 1200mm 16W 840 T8 I
Full product name	COR CNG LEDtube 1200mm 16W 840 T8 I
Full product code	872110303542400
Order code	929001999808
Material Nr. (12NC)	929001999808
Numerator - Quantity Per Pack	1
EAN/UPC - Product/Case	8721103035424
Numerator - Packs per outer box	25
EAN/UPC - Case	8721103035431

Dimensional drawing



Product	D1	D2	A1	A2	A3
COR CNG LEDtube 1200mm 16W 840 T8 I	25.6 mm	27.8 mm	1,199.4 mm	1,205.3 mm	1,213.6 mm

Photometric data

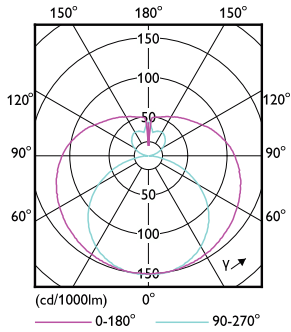


Spectral Power Distribution Colour - COR CNG LEDtube 1200mm 16W 840 T8 I

General uniform lighting - COR CNG LEDtube 1200mm 16W 840 T8 I

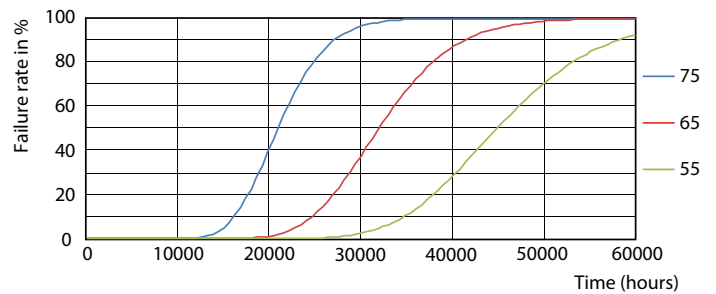
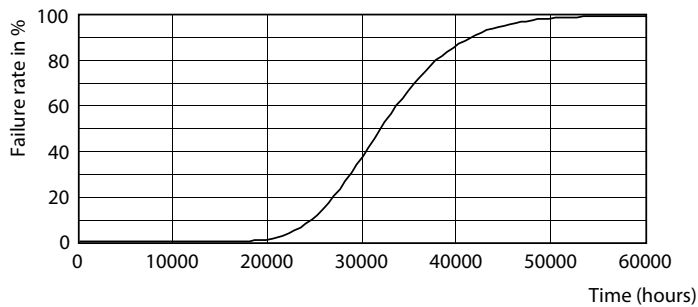
Contractor Grade LED tube T8

Photometric data

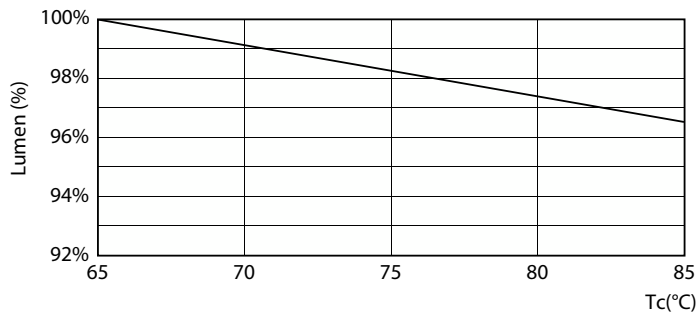


Light Distribution Diagram - COR CNG LEDtube 1200mm 16W 840 T8 I

Lifetime

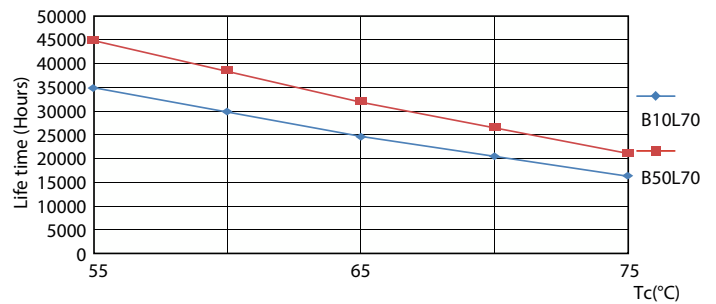


Life Expectancy Diagram



Lumen Maintenance Diagram - COR CNG LEDtube 1200mm 16W 840 T8 I

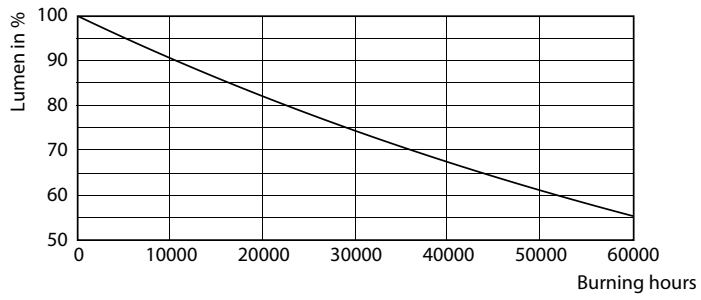
FailureRate



LifetimeVsTc

Contractor Grade LED tube T8

Lifetime



Lumen Maintenance Diagram - COR CNG LEDtube 1200mm 16W 840 T8 I

