

MASTER LEDtube T8

Master LEDTube 1200mm 12.5W 840 T8 W JP

MASTER, LEDtube, T8, Mains, 1200 mm, 100-242 V, 12.5 W, 36W TL-D, 4000 K, 2000 lm, 50000 hour(s)

The Philips MASTER LEDtube integrates a LED light source into a traditional fluorescent form factor. Its unique design creates a perfectly uniform visual appearance, which cannot be distinguished from traditional fluorescent. These T8 LED tubes are the right choice for absolute performance and are designed to stand up to everyday conditions. Unparalleled savings thanks to low energy consumption and an exceptionally long lifetime ensure this tube masters every demanding application.

Warnings and Safety

· NOTE: The overall energy efficiency and light distribution of any installation that uses these lamps will be determined by the design of the installation.

Product data

General Information		Luminous Efficacy (rated) (Nom)	
Cap-Base	G13	Luminous Efficacy (rated) (Nom)	160.00 lm/W
Nominal lifetime	50,000 hour(s)	Color Consistency	<6
Switching Cycle	200,000	Color rendering index (CRI)	83
Lighting Technology	LEDtube	LLMF At End Of Nominal Lifetime (Nom)	70 %
Light Technical		Operating and Electrical	
Color Code	840 [CCT of 4000K]	Line Frequency	50 to 60 Hz
Beam Angle (Nom)	160 degree(s)	Input Frequency	50 to 60 Hz
Luminous Flux	2,000 lm	Power Consumption	12.5 W
Color Designation	Cool White (CW)	Lamp Current (Max)	128 mA
Correlated Color Temperature (Nom)	4000 K	Lamp Current (Min)	55 mA
		Starting Time (Nom)	0.5 s

MASTER LEDtube T8

Warm-up time to 60% light	0.5 s
Power Factor (Fraction)	0.9
Voltage (Nom)	100-242 V
LED alternative to fluorescent lamp power	36W TL-D
Ballast Compatibility	Mains

Temperature

T-Case Maximum (Nom)	55 °C
----------------------	-------

Controls and Dimming

Dimmable	No
----------	----

Mechanical and Housing

Bulb Finish	Frosted
Bulb Material	Plastic
Product Length	1,200 mm
Bulb Shape	T8
Net Weight (Piece)	0.210 kg

Approval and Application

Energy Saving Product	Yes
-----------------------	-----

Approval Marks	RoHS compliance KEMA Keur certificate
EU RoHS compliant	Yes
Ambient temperature range	-20 °C to 45 °C

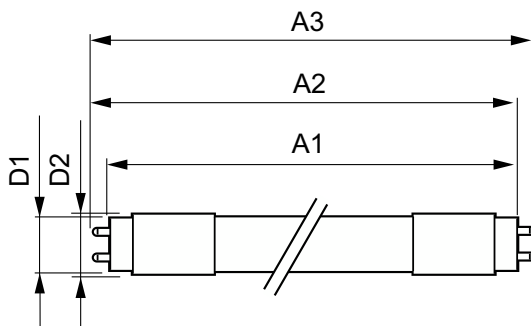
Application Conditions

Wireless Technology	Not applicable
---------------------	----------------

Product Data

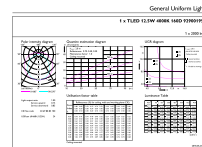
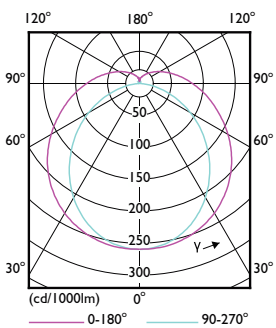
Order product name	Master LEDTube 1200mm 12.5W 840 T8 W JP
Full product name	Master LEDTube 1200mm 12.5W 840 T8 W JP
Full product code	871951442180600
Order code	929001952848
Material Nr. (12NC)	929001952848
Numerator - Quantity Per Pack	1
EAN/UPC - Product/Case	8719514421806
Numerator - Packs per outer box	20
EAN/UPC - Case	8719514421813

Dimensional drawing



Product	D1	D2	A1	A2	A3
Master LEDTube 1200mm 12.5W 840 T8 W JP	25.7 mm	28 mm	1,198.2 mm	1,205.3 mm	1,212.4 mm

Photometric data

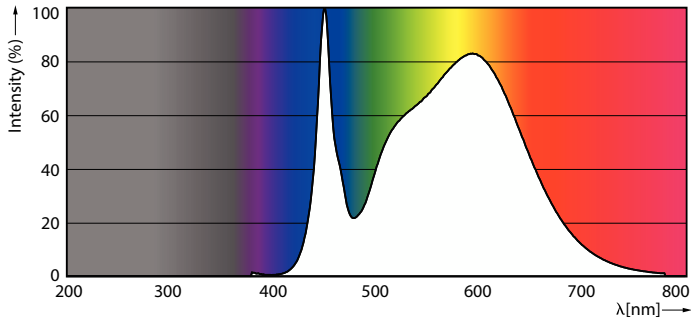


Light Distribution Diagram - Master LEDTube 1200mm 12.5W 840 T8 W JP

General uniform lighting - Master LEDTube 1200mm 12.5W 840 T8 W JP

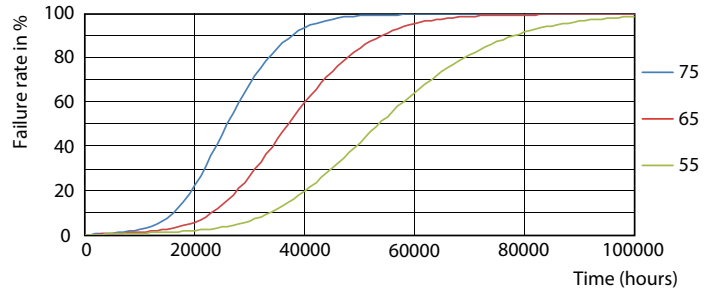
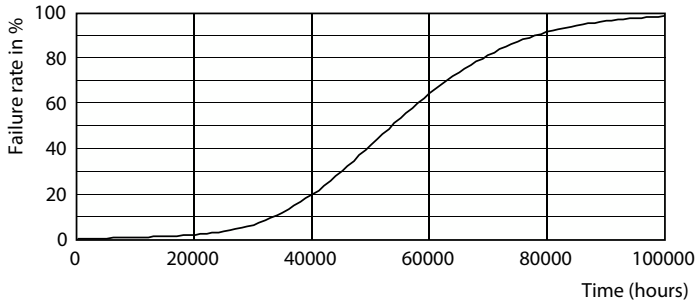
MASTER LEDtube T8

Photometric data

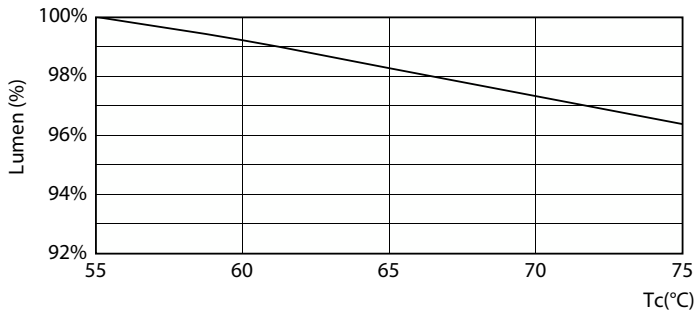


Spectral Power Distribution Colour - Master LEDTube 1200mm 12.5W 840 T8 W JP

Lifetime

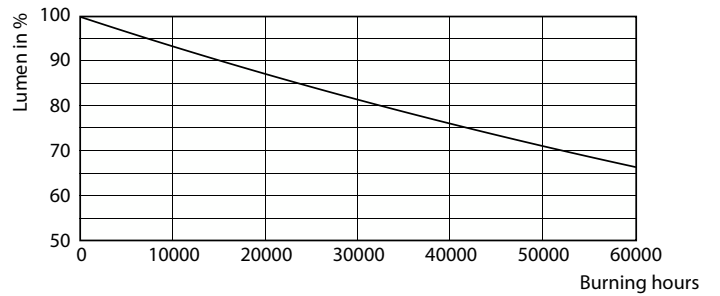


Life Expectancy Diagram



Lumen Maintenance Diagram - Master LEDTube 1200mm 12.5W 840 T8 W JP

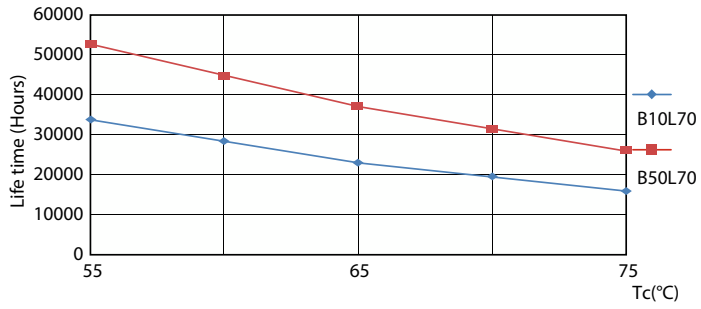
FailureRate



Lumen Maintenance Diagram - Master LEDTube 1200mm 12.5W 840 T8 W JP

MASTER LEDtube T8

Lifetime



LifetimeVsTc

