



MASTER LED tube Mains T5

MAS LEDtube 1500mm HO 26W 840 T5

MASTER, LEDtube, T5, Mains, 1500 mm, 26 W, 49W TL5 HO, 4000 K, 3900 lm, CRI 80, 60000 hour(s)

MASTER, LEDtube, T5, Mains, 1500 mm, 26 W, LED alternative to 49W TL5 HO, 4000 K, 3900 lm, CRI 80, 60000 hour(s), 150 lm/W, EEL D, G5, Beam angle 200 degree(s), Glass, 1500 mm, RG0, SDCM 6, PF 0.92, IP20, SVM 0.4, PstLM 1

Product data

| General Information | | Photobiological safety according to EN 62471 | |
|---------------------------------------|--------------------|--|-------------|
| Cap-Base | G5 | RG0 | |
| Nominal lifetime | 60,000 hour(s) | | |
| Switching Cycle | 200,000 | | |
| Lighting Technology | LEDtube | | |
| Flux measurement reference | Sphere | | |
| Warranty period | 5 years | | |
| Light Technical | | Operating and Electrical | |
| Color Code | 840 [CCT of 4000K] | Line Frequency | 50 to 60 Hz |
| Beam Angle (Nom) | 200 degree(s) | Input Frequency | 50 to 60 Hz |
| Luminous Flux | 3,900 lm | Power Consumption | 26 W |
| Color Designation | Cool White (CW) | Lamp Current (Nom) | 125 mA |
| Correlated Color Temperature (Nom) | 4000 K | Starting Time (Nom) | 0.5 s |
| Luminous Efficacy (rated) (Nom) | 150 lm/W | Warm-up time to 60% light | 0.5 s |
| Color Consistency | <6 | Power Factor (Fraction) | 0.92 |
| Color rendering index (CRI) | 80 | Voltage (Nom) | 220-240 V |
| LLMF At End Of Nominal Lifetime (Nom) | 70 % | LED alternative to fluorescent lamp power | 49W TL5 HO |
| | | Inrush current at mains | 20 |
| | | Max. lamp no. on MCB B type 10A - Mains | 31 |
| | | Max. lamp no. on MCB B type 10A – EM ballast without Compensation Capacitor. | - |
| | | Max. lamp no. on MCB B type 10A – EM ballast with Compensation Capacitor. | - |

MASTER LED tube Mains T5

| | |
|--|-------|
| Max. lamp no. on MCB B type 16A – Mains | 50 |
| Max. lamp no. on MCB B type 16A – EM ballast without Compensation Capacitor. | - |
| Max. lamp no. on MCB B type 16A – EM ballast with Compensation Capacitor. | - |
| Ballast Compatibility | Mains |

Temperature

| | |
|----------------------|-------|
| T-Case Maximum (Nom) | 65 °C |
|----------------------|-------|

Controls and Dimming

| | |
|----------|----|
| Dimmable | No |
|----------|----|

Mechanical and Housing

| | |
|--------------------|----------|
| Bulb Finish | Frosted |
| Bulb Material | Glass |
| Product Length | 1,500 mm |
| Bulb Shape | T5 |
| Net Weight (Piece) | 0.285 kg |

Approval and Application

| | |
|-------------------------------|-----------------|
| Energy Efficiency Class | D |
| Energy Saving Product | Yes |
| Approval Marks | RoHS compliance |
| Energy Consumption kWh/1000 h | 26 kWh |

| | |
|---|---------------|
| EPREL Registration Number | 1476415 |
| CE mark | Yes |
| EU RoHS compliant | Yes |
| Flickering value (PstLM) - Flickering value as per EN 61000-3-3 | 1 |
| Stroboscopic effect visibility measure (SVM) | 0.4 |
| Ambient temperature range | -20 to +45 °C |

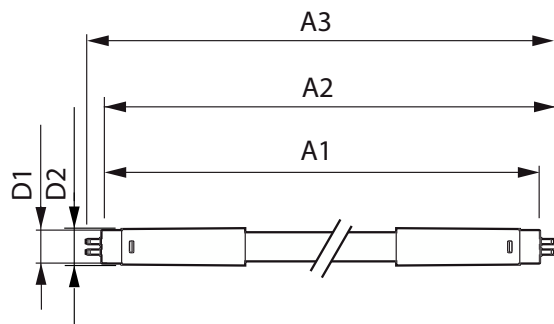
Application Conditions

| | |
|---------------------|----------------|
| Wireless Technology | Not applicable |
|---------------------|----------------|

Product Data

| | |
|---------------------------------|----------------------------------|
| Order product name | MAS LEDtube 1500mm HO 26W 840 T5 |
| Full product name | MAS LEDtube 1500mm HO 26W 840 T5 |
| Full product code | 871869681931900 |
| Order code | 929001908902 |
| Material Nr. (12NC) | 929001908902 |
| Numerator - Quantity Per Pack | 1 |
| EAN/UPC - Product/Case | 8718696819319 |
| Numerator - Packs per outer box | 10 |
| EAN/UPC - Case | 8718696819326 |

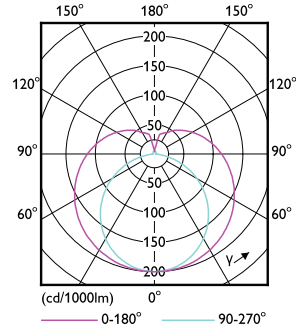
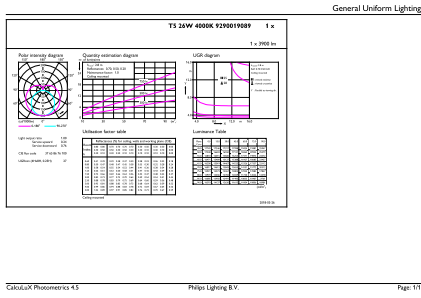
Dimensional drawing



| Product | D1 | D2 | A1 | A2 | A3 |
|----------------------------------|---------|---------|----------|----------|----------|
| MAS LEDtube 1500mm HO 26W 840 T5 | 15.5 mm | 17.1 mm | 1,449 mm | 1,456 mm | 1,463 mm |

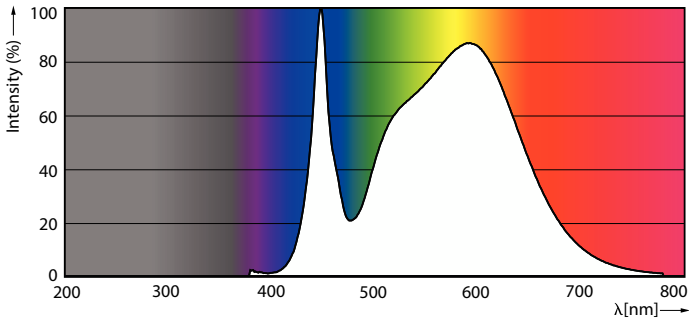
MASTER LED tube Mains T5

Photometric data



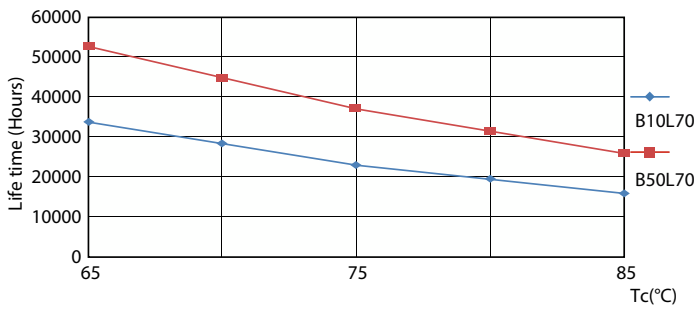
General uniform lighting - MAS LEDtube 1500mm HO 26W 840 T5

Light Distribution Diagram - MAS LEDtube 1500mm HO 26W 840 T5

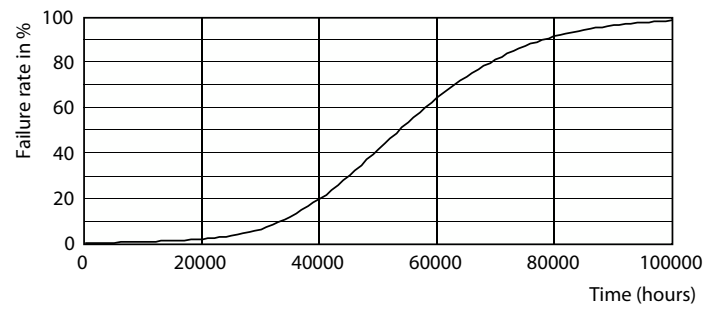


Spectral Power Distribution Colour - MAS LEDtube 1500mm HO 26W 840 T5

Lifetime



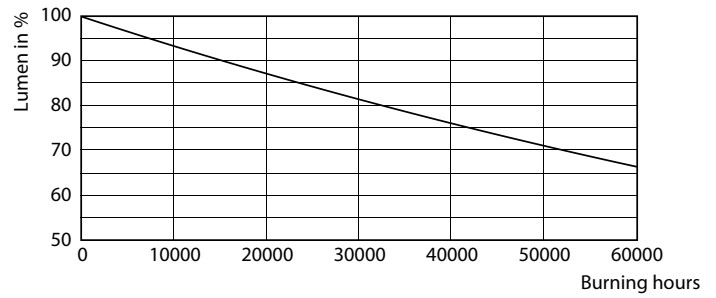
LifetimeVsTc



Life Expectancy Diagram

MASTER LED tube Mains T5

Lifetime



Lumen Maintenance Diagram - MAS LEDtube 1500mm HO 26W 840 T5

Lumen Maintenance Diagram - MAS LEDtube 1500mm HO 26W 840 T5



FailureRate

