



MASTER LED tube Mains T5

MAS LEDtube 1200mm HO 26W 840 T5 HK

LEDtube, T5, 1200 mm, 26 W, 4000 K, 3900 lm, 50000 hour(s)

The new Philips Master LEDtube Mains T5 brings simplicity to your lighting project. You don't need to pay attention to the driver technology anymore. Thanks to a unique design, Philips MASTER LEDtube Mains T5 installs in luminaires operating on mains power connection. So simple to operate! . Perfectly safe, reliable & easy to install Philips MASTER LEDtube Mains T5 is the ideal alternative to standard fluorescent tubes to maximize value over lifetime with high energy saving and lower maintenance costs.

Product data

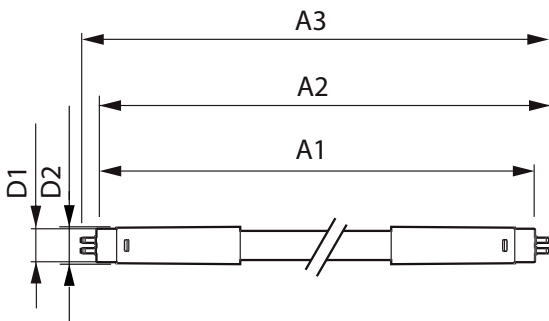
General Information		LLMF At End Of Nominal Lifetime (Nom)		70 %	
Cap-Base	G5	Photobiological safety according to EN 62471 RGO			
Nominal lifetime	50,000 hour(s)	Operating and Electrical			
Switching Cycle	200,000	Input Frequency	50 to 60 Hz		
Lighting Technology	LEDtube	Power Consumption	26 W		
Light Technical		Lamp Current (Nom)	150 mA		
Color Code	840 [CCT of 4000K]	Wattage Equivalent	54 W		
Beam Angle (Nom)	200 degree(s)	Starting Time (Nom)	0.5 s		
Luminous Flux	3,900 lm	Warm-up time to 60% light	0.5 s		
Color Designation	Cool White (CW)	Power Factor (Fraction)	0.92		
Correlated Color Temperature (Nom)	4000 K	Voltage (Nom)	220-240 V		
Luminous Efficacy (rated) (Nom)	150 lm/W				
Color Consistency	<6				
Color rendering index (CRI)	80				

MASTER LED tube Mains T5

Temperature	
T-Case Maximum (Nom)	65 °C
Controls and Dimming	
Dimmable	No
Mechanical and Housing	
Bulb Finish	Frosted
Bulb Material	Glass
Product Length	1,200 mm
Bulb Shape	T5
Net Weight (Piece)	0.155 kg
Approval and Application	
Energy Saving Product	Yes
Approval Marks	RoHS compliance CE marking KEMA Keur certificate
CE mark	Yes
EU RoHS compliant	Yes

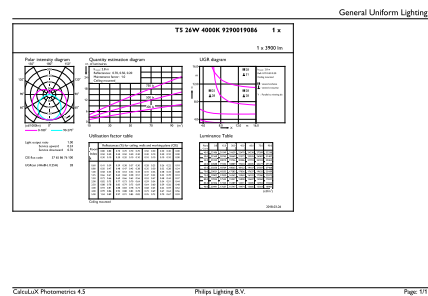
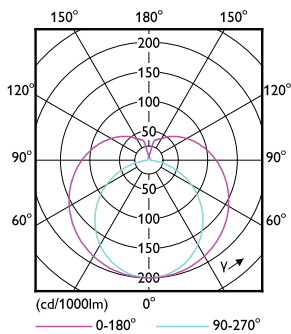
Ambient temperature range	-20 to +45 °C
Application Conditions	
Wireless Technology	Not applicable
Product Data	
Order product name	MAS LEDtube 1200mm HO 26W 840 T5 HK
Full product name	MAS LEDtube 1200mm HO 26W 840 T5 HK
Full product code	872016939169700
Order code	929001908608
Material Nr. (12NC)	929001908608
Numerator - Quantity Per Pack	1
EAN/UPC - Product/Case	8720169391697
Numerator - Packs per outer box	10
EAN/UPC - Case	8720169391703

Dimensional drawing



Product	D1	D2	A1	A2	A3
MAS LEDtube 1200mm HO 26W 840 T5 HK	15.5 mm	17.1 mm	1,149 mm	1,156 mm	1,163 mm

Photometric data

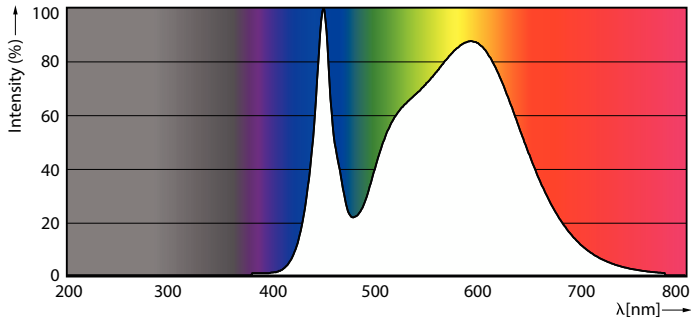


Light Distribution Diagram - MAS LEDtube 1200mm HO 26W 840 T5 HK

General uniform lighting - MAS LEDtube 1200mm HO 26W 840 T5 HK

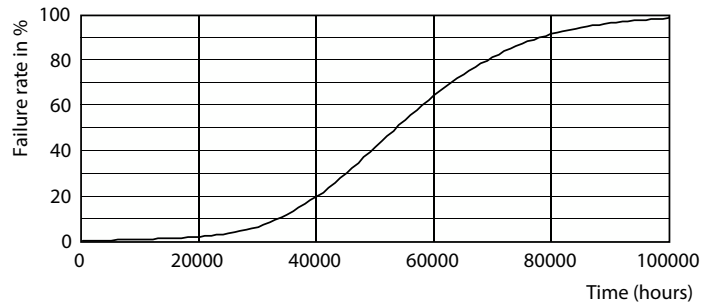
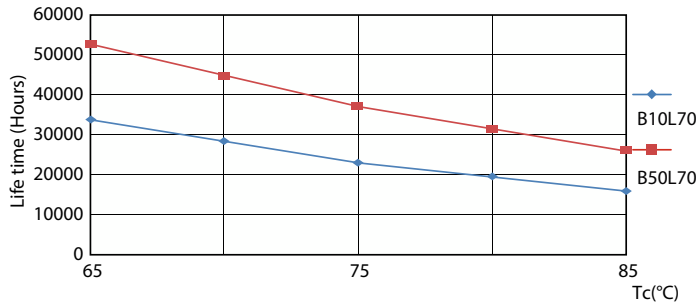
MASTER LED tube Mains T5

Photometric data



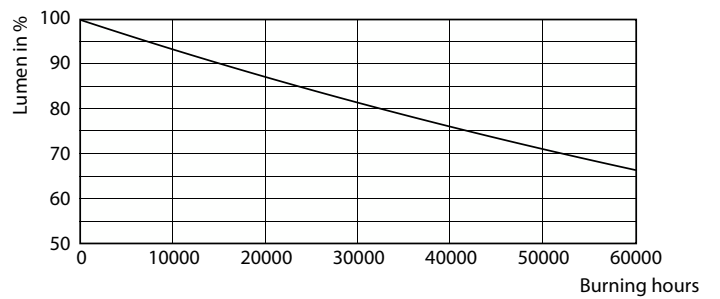
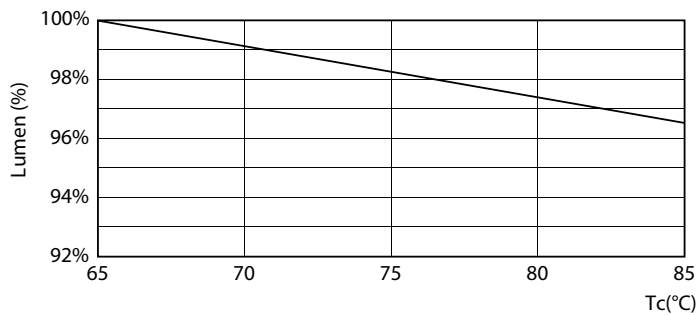
Spectral Power Distribution Colour - MAS LEDtube 1200mm HO 26W 840 T5 HK

Lifetime



LifetimeVsTc

Life Expectancy Diagram

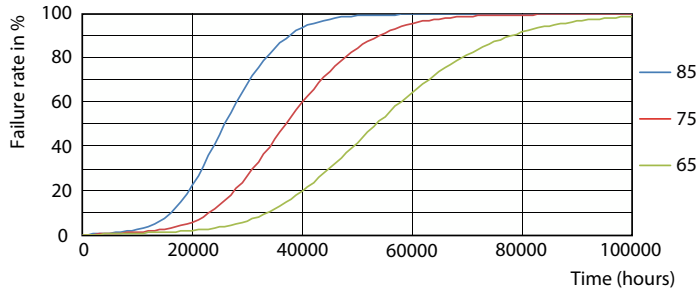


Lumen Maintenance Diagram - MAS LEDtube 1200mm HO 26W 840 T5 HK

Lumen Maintenance Diagram - MAS LEDtube 1200mm HO 26W 840 T5 HK

MASTER LED tube Mains T5

Lifetime



FailureRate

