



# MASTER LED tube Mains T5

## MAS LEDtube 1200mm HO 26W 840 T5

MASTER, LEDtube, T5, Mains, 1200 mm, 26 W, 54W TL5 HO, 4000 K, 3900 lm, CRI 80, 60000 hour(s)

MASTER, LEDtube, T5, Mains, 1200 mm, 26 W, LED alternative to 54W TL5 HO, 4000 K, 3900 lm, CRI 80, 60000 hour(s), 150 lm/W, EEL D, G5, Beam angle 200 degree(s), Glass, 1200 mm, RGO, SDCM 6, PF 0.92, IP20, SVM 0.4, PstLM 1

### Product data

General Information		Photobiological safety according to EN 62471	
Cap-Base	G5		RGO
Nominal lifetime	60,000 hour(s)	<b>Operating and Electrical</b>	
Switching Cycle	200,000	Line Frequency	50 to 60 Hz
Lighting Technology	LEDtube	Input Frequency	50 to 60 Hz
Flux measurement reference	Sphere	Power Consumption	26 W
Warranty period	5 years	Lamp Current (Nom)	125 mA
<b>Light Technical</b>		Starting Time (Nom)	0.5 s
Color Code	840 [CCT of 4000K]	Warm-up time to 60% light	0.5 s
Beam Angle (Nom)	200 degree(s)	Power Factor (Fraction)	0.92
Luminous Flux	3,900 lm	Voltage (Nom)	220-240 V
Color Designation	Cool White (CW)	LED alternative to fluorescent lamp power	54W TL5 HO
Correlated Color Temperature (Nom)	4000 K	Inrush current at mains	20
Luminous Efficacy (rated) (Nom)	150 lm/W	Max. lamp no. on MCB B type 10A - Mains	31
Color Consistency	<6	Max. lamp no. on MCB B type 10A – EM ballast without Compensation Capacitor.	-
Color rendering index (CRI)	80	Max. lamp no. on MCB B type 10A – EM ballast with Compensation Capacitor.	-
LLMF At End Of Nominal Lifetime (Nom)	70 %		

# MASTER LED tube Mains T5

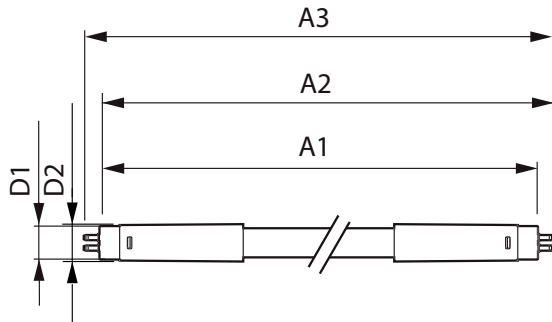
Max. lamp no. on MCB B type 16A – Mains	50
Max. lamp no. on MCB B type 16A – EM ballast without Compensation Capacitor.	-
Max. lamp no. on MCB B type 16A – EM ballast with Compensation Capacitor.	-
Ballast Compatibility	Mains
<b>Temperature</b>	
T-Case Maximum (Nom)	65 °C
<b>Controls and Dimming</b>	
Dimmable	No
<b>Mechanical and Housing</b>	
Bulb Finish	Frosted
Bulb Material	Glass
Product Length	1,200 mm
Bulb Shape	T5
Net Weight (Piece)	0.215 kg
<b>Approval and Application</b>	
Energy Efficiency Class	D
Energy Saving Product	Yes
Approval Marks	RoHS compliance
Energy Consumption kWh/1000 h	26 kWh

EPREL Registration Number	1476416
CE mark	Yes
EU RoHS compliant	Yes
Flickering value (PstLM) - Flickering value as per EN 61000-3-3	1
Stroboscopic effect visibility measure (SVM)	0.4
Ambient temperature range	-20 to +45 °C

<b>Application Conditions</b>	
Wireless Technology	Not applicable

<b>Product Data</b>	
Order product name	MAS LEDtube 1200mm HO 26W 840 T5
Full product name	MAS LEDtube 1200mm HO 26W 840 T5
Full product code	871869681923400
Order code	929001908602
Material Nr. (12NC)	929001908602
Numerator - Quantity Per Pack	1
EAN/UPC - Product/Case	8718696819234
Numerator - Packs per outer box	10
EAN/UPC - Case	8718696819241

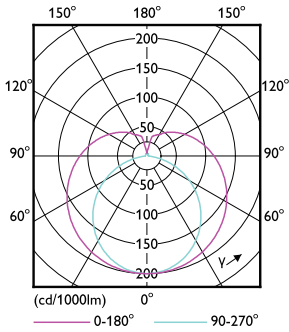
## Dimensional drawing



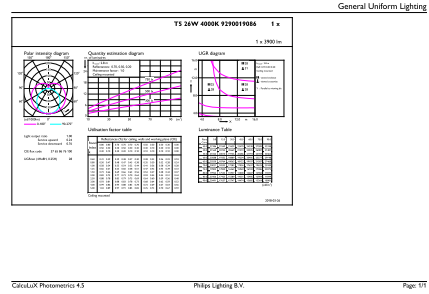
Product	D1	D2	A1	A2	A3
MAS LEDtube 1200mm HO 26W 840 T5	15.5 mm	17.1 mm	1,149 mm	1,156 mm	1,163 mm

# MASTER LED tube Mains T5

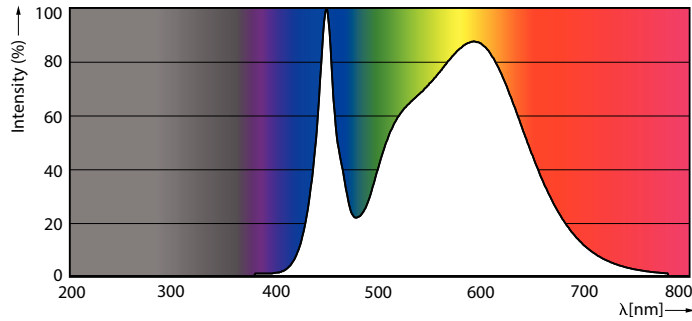
## Photometric data



Light Distribution Diagram - MAS LEDtube 1200mm HO 26W 840 T5

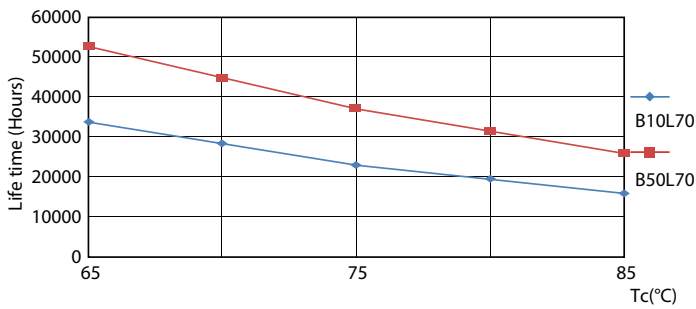


General uniform lighting - MAS LEDtube 1200mm HO 26W 840 T5

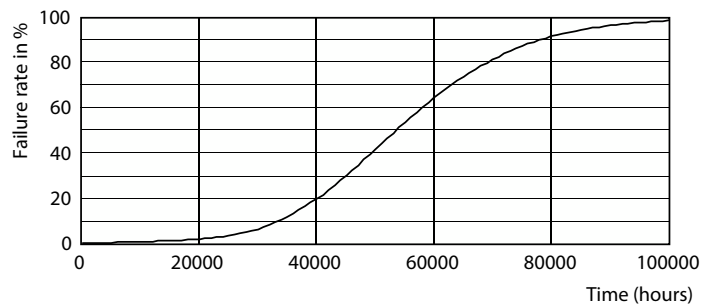


Spectral Power Distribution Colour - MAS LEDtube 1200mm HO 26W 840 T5

## Lifetime



LifetimeVsTc



Life Expectancy Diagram

# MASTER LED tube Mains T5

## Lifetime



Lumen Maintenance Diagram - MAS LEDtube 1200mm HO 26W 840 T5

Lumen Maintenance Diagram - MAS LEDtube 1200mm HO 26W 840 T5



FailureRate

