



MASTER LED tube Mains T5

MASTER LEDtube 1200mm HO 26W 840 T5

MASTER, LEDtube, T5, Mains, 1200 mm, 26 W, 54W TL5 HO, 4000 K, 3900 lm, CRI 80, 60000 hour(s)

The new Philips Master LEDtube Mains T5 brings simplicity to your lighting project. You don't need to pay attention to the driver technology anymore. Thanks to a unique design, Philips MASTER LEDtube Mains T5 installs in luminaires operating on mains power connection. So simple to operate! . Perfectly safe, reliable & easy to install, the Philips MASTER LEDtube Mains T5 is the ideal alternative to standard fluorescent tubes to maximise value over lifetime with high energy savings and lower maintenance costs.

Product data

General Information	
Cap-Base	G5
Nominal lifetime	60,000 hour(s)
Switching Cycle	200,000
Lighting Technology	LEDtube
Flux measurement reference	Sphere
Warranty period	5 years
Light Technical	
Color Code	840 [CCT of 4000K]
Beam Angle (Nom)	200 degree(s)
Luminous Flux	3,900 lm
Color Designation	Cool White (CW)
Correlated Color Temperature (Nom)	4000 K

Luminous Efficacy (rated) (Nom)	150 lm/W
Color Consistency	<6
Color rendering index (CRI)	80
LLMF At End Of Nominal Lifetime (Nom)	70 %
Photobiological safety according to EN 62471	RG0
Operating and Electrical	
Line Frequency	50 to 60 Hz
Input Frequency	50 to 60 Hz
Power Consumption	26 W
Lamp Current (Nom)	125 mA
Starting Time (Nom)	0.5 s
Warm-up time to 60% light	0.5 s
Power Factor (Fraction)	0.92

MASTER LED tube Mains T5

Voltage (Nom)	220-240 V
LED alternative to fluorescent lamp power	54W TL5 HO
Inrush current at mains	20
Max. lamp no. on MCB B type 10A – Mains	31
Max. lamp no. on MCB B type 10A – EM ballast without Compensation Capacitor.	-
Max. lamp no. on MCB B type 10A – EM ballast with Compensation Capacitor.	-
Max. lamp no. on MCB B type 16A – Mains	50
Max. lamp no. on MCB B type 16A – EM ballast without Compensation Capacitor.	-
Max. lamp no. on MCB B type 16A – EM ballast with Compensation Capacitor.	-
Ballast Compatibility	Mains

Temperature

T-Case Maximum (Nom)	65 °C
----------------------	-------

Controls and Dimming

Dimmable	No
----------	----

Mechanical and Housing

Bulb Finish	Frosted
Bulb Material	Glass
Product Length	1,200 mm
Bulb Shape	T5
Net Weight (Piece)	0.215 kg

Approval and Application

Energy Efficiency Class	D
-------------------------	---

Energy Saving Product	Yes
Approval Marks	RoHS compliance
Energy Consumption kWh/1000 h	26 kWh
EPREL Registration Number	1476416
CE mark	Yes
EU RoHS compliant	Yes
Flickering value (PstLM) – Flickering value as per EN 61000-3-3	1
Stroboscopic effect visibility measure (SVM)	0.4
Ambient temperature range	-20 to +45 °C

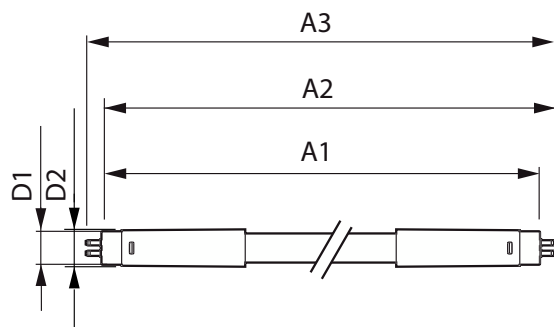
Application Conditions

Wireless Technology	Not applicable
---------------------	----------------

Product Data

Order product name	MAS LEDtube 1200mm HO 26W 840 T5
Full product name	MASTER LEDtube 1200mm HO 26W 840 T5
Full product code	871869681923400
Order code	81923400
Material Nr. (12NC)	929001908602
Numerator - Quantity Per Pack	1
EAN/UPC - Product/Case	8718696819234
Numerator - Packs per outer box	10
EAN/UPC - Case	8718696819241

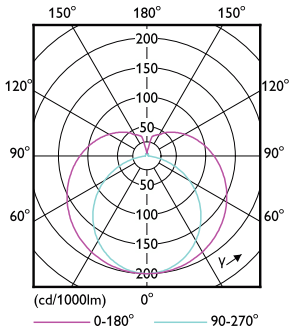
Dimensional drawing



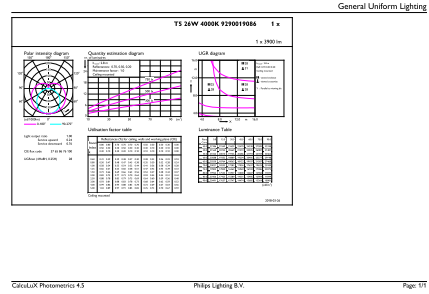
Product	D1	D2	A1	A2	A3
MAS LEDtube 1200mm HO 26W 840 T5	15.5 mm	17.1 mm	1,149 mm	1,156 mm	1,163 mm

MASTER LED tube Mains T5

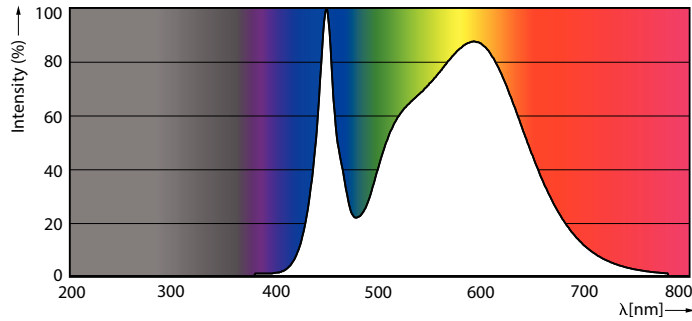
Photometric data



Light Distribution Diagram - MAS LEDtube 1200mm HO 26W 840 T5

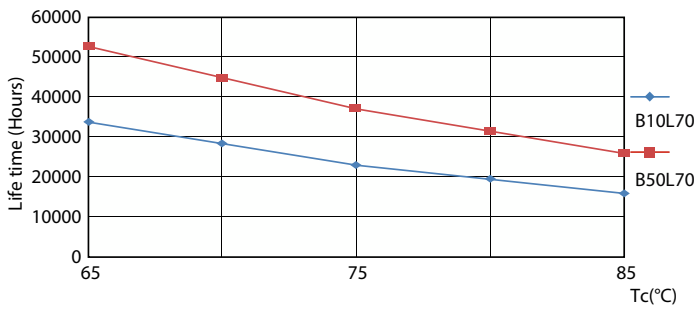


General uniform lighting - MAS LEDtube 1200mm HO 26W 840 T5

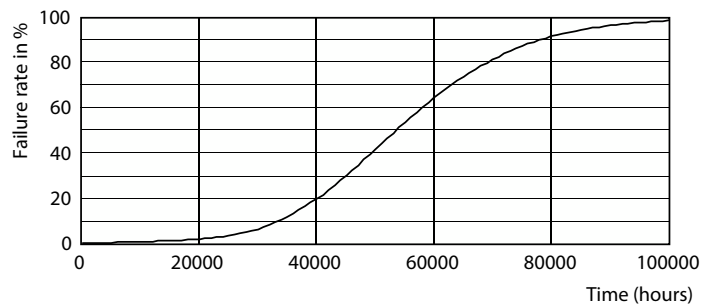


Spectral Power Distribution Colour - MAS LEDtube 1200mm HO 26W 840 T5

Lifetime



LifetimeVsTc



Life Expectancy Diagram

MASTER LED tube Mains T5

Lifetime



Lumen Maintenance Diagram - MAS LEDtube 1200mm HO 26W 840 T5

Lumen Maintenance Diagram - MAS LEDtube 1200mm HO 26W 840 T5



FailureRate

