



# MASTER LEDtube T8

## MAS LEDtube 1500mm UO 24W 840 T8 FF RCA

MASTER, LEDtube, T8, EM, 1500 mm, 220-240 V, 24 W, 58W TL-D, 4000 K, 3700 lm, 50000 hour(s)

The Philips MASTER LEDtube integrates a LED light source into a traditional fluorescent form factor. Its unique design creates a perfectly uniform visual appearance, which cannot be distinguished from traditional fluorescent. These T8 LED tubes are the right choice for absolute performance and are designed to stand up to everyday conditions. Unparalleled savings thanks to low energy consumption and an exceptionally long lifetime ensure this tube masters every demanding application.

### Warnings and Safety

· NOTE: The overall energy efficiency and light distribution of any installation that uses these lamps will be determined by the design of the installation.

### Product data

General Information		Luminous Efficacy (rated) (Nom)	
Cap-Base	G13	Luminous Efficacy (rated) (Nom)	154.00 lm/W
Nominal lifetime	50,000 hour(s)	Color Consistency	<6
Switching Cycle	200,000	Color rendering index (CRI)	83
Lighting Technology	LEDtube	LLMF At End Of Nominal Lifetime (Nom)	70 %
Light Technical		Operating and Electrical	
Color Code	840 [CCT of 4000K]	Line Frequency	50 to 60 Hz
Beam Angle (Nom)	160 degree(s)	Input Frequency	50 to 60 Hz
Luminous Flux	3,700 lm	Power Consumption	24 W
Color Designation	Cool White (CW)	Lamp Current (Max)	112 mA
Correlated Color Temperature (Nom)	4000 K	Lamp Current (Min)	103 mA
		Starting Time (Nom)	0.5 s

# MASTER LEDtube T8

Warm-up time to 60% light	0.5 s
Power Factor (Fraction)	0.9
Voltage (Nom)	220-240 V
LED alternative to fluorescent lamp power	58W TL-D
Ballast Compatibility	EM

## Temperature

T-Case Maximum (Nom)	60 °C
----------------------	-------

## Controls and Dimming

Dimmable	No
----------	----

## Mechanical and Housing

Product Length	1,500 mm
Bulb Shape	T8
Net Weight (Piece)	0.315 kg

## Approval and Application

Energy Saving Product	Yes
Approval Marks	RoHS compliance TUV CE marking KEMA Keur certificate

Energy Consumption kWh/1000 h	24 kWh
EU RoHS compliant	Yes
Ambient temperature range	-20 °C to 45 °C

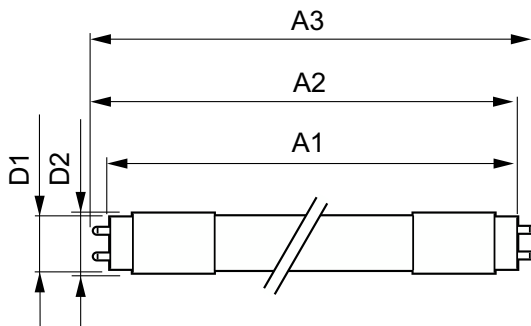
## Application Conditions

Wireless Technology	Not applicable
---------------------	----------------

## Product Data

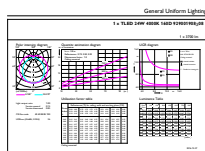
Order product name	MAS LEDtube 1500mm UO 24W 840 T8 FF RCA
Full product name	MAS LEDtube 1500mm UO 24W 840 T8 FF RCA
Full product code	871869681807700
Order code	929001908308
Material Nr. (12NC)	929001908308
Numerator - Quantity Per Pack	1
EAN/UPC - Product/Case	8718696818077
Numerator - Packs per outer box	10
EAN/UPC - Case	8718696818084

## Dimensional drawing

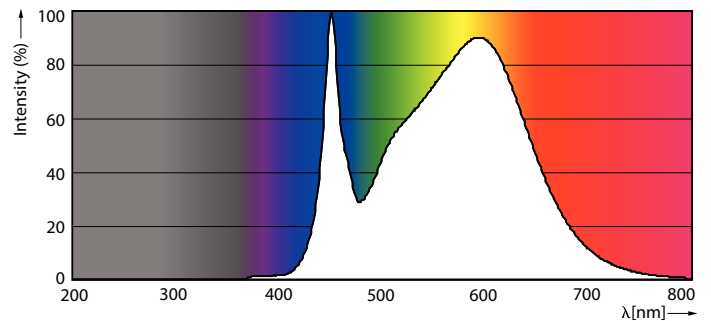


Product	D1	D2	A1	A2	A3
MAS LEDtube 1500mm UO 24W 840 T8 FF RCA	25.8 mm	28 mm	1,498.7 mm	1,505.8 mm	1,498.7 mm

## Photometric data



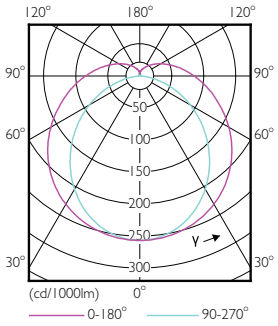
General uniform lighting - MAS LEDtube 1500mm UO 24W 840 T8 FF RCA



Spectral Power Distribution Colour - MAS LEDtube 1500mm UO 24W 840 T8 FF RCA

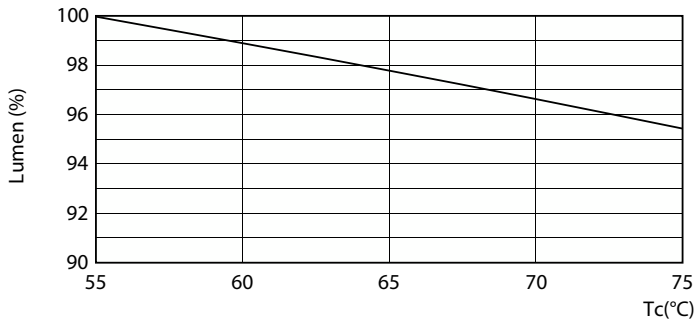
# MASTER LEDtube T8

## Photometric data

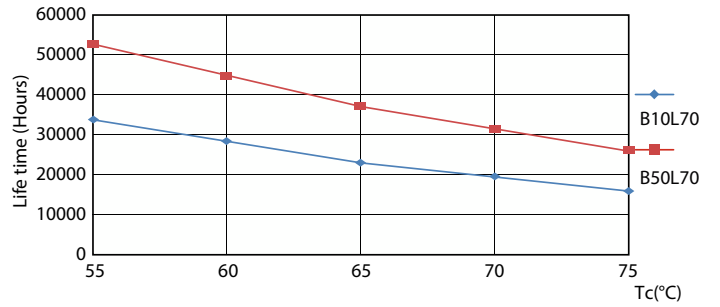


Light Distribution Diagram - MAS LEDtube 1500mm UO 24W 840 T8 FF RCA

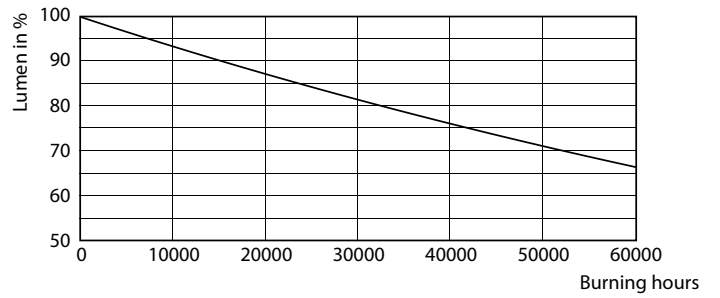
## Lifetime



Lumen Maintenance Diagram - MAS LEDtube 1500mm UO 24W 840 T8 FF RCA



LEDtube G13 16W 3000K 160D LifetimeVsTc



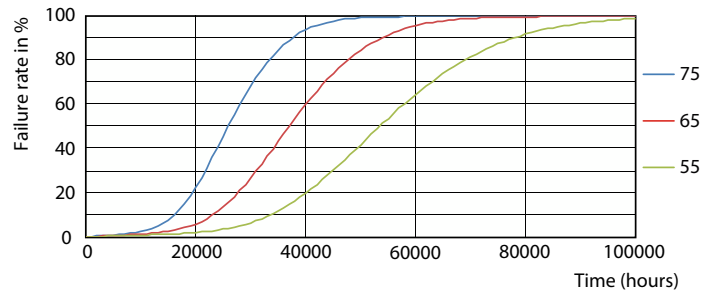
Lumen Maintenance Diagram - MAS LEDtube 1500mm UO 24W 840 T8 FF RCA

# MASTER LEDtube T8

## Lifetime



LEDtube G13 16W 3000K 160D



LEDtube G13 16W 3000K 160D FailureRate

