



MASTER LEDtube T8

MAS LEDtube 600mm HO VWV 10W 865 T8

MASTER, LEDtube, T8, 600 mm, 100–277 V, 10 W, 17–18W TL–D, 6500 K, 1050 lm, 60000 hour(s)

The Philips MASTER LEDtube integrates a LED light source into a traditional fluorescent form factor. Its unique design creates a perfectly uniform visual appearance, which cannot be distinguished from traditional fluorescent. These T8 LED tubes are the right choice for absolute performance and are designed to stand up to everyday conditions. Unparalleled savings thanks to low energy consumption and an exceptionally long lifetime ensure this tube masters every demanding application.

Warnings and Safety

· NOTE: The overall energy efficiency and light distribution of any installation that uses these lamps will be determined by the design of the installation.

Product data

General Information		Luminous Efficacy (rated) (Nom)	
Cap-Base	G13	Luminous Efficacy (rated) (Nom)	105.00 lm/W
Nominal lifetime	60,000 hour(s)	Color Consistency	<6
Switching Cycle	200,000	Color rendering index (CRI)	80
Lighting Technology	LEDtube	LLMF At End Of Nominal Lifetime (Nom)	70 %
Light Technical		Operating and Electrical	
Color Code	865 [CCT of 6500K]	Line Frequency	50 to 60 Hz
Beam Angle (Nom)	160 degree(s)	Input Frequency	50 to 60 Hz
Luminous Flux	1,050 lm	Power Consumption	10 W
Color Designation	Cool Daylight	Lamp Current (Max)	101 mA
Correlated Color Temperature (Nom)	6500 K	Lamp Current (Min)	38 mA
		Starting Time (Nom)	0.5 s

MASTER LEDtube T8

Warm-up time to 60% light	0.5 s
Power Factor (Fraction)	0.90
Voltage (Nom)	100-277 V
LED alternative to fluorescent lamp power	17-18W TL-D

Temperature

T-Case Maximum (Nom)	60 °C
----------------------	-------

Controls and Dimming

Dimmable	No
----------	----

Mechanical and Housing

Bulb Finish	Frosted
Product Length	600 mm
Bulb Shape	T8
Net Weight (Piece)	0.115 kg

Approval and Application

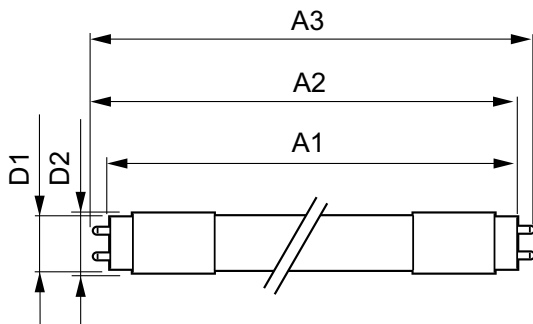
Energy Saving Product	Yes
-----------------------	-----

Approval Marks	RoHS compliance CE marking UL certificate KEMA Keur certificate
Energy Consumption kWh/1000 h	10 kWh
EU RoHS compliant	Yes
Ambient temperature range	-20 °C to 45 °C

Product Data

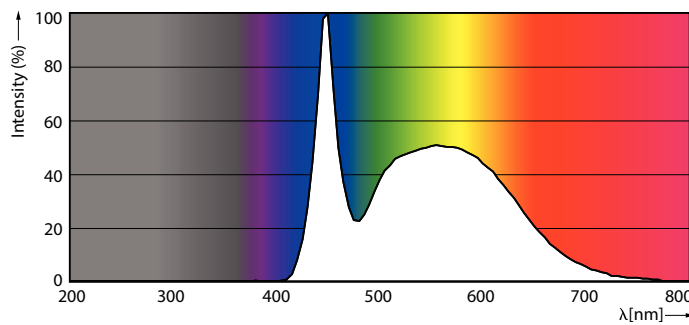
Order product name	MAS LEDtube 600mm HO VWV 10W 865 T8
Full product name	MAS LEDtube 600mm HO VWV 10W 865 T8
Full product code	871869681127600
Order code	929001877612
Material Nr. (12NC)	929001877612
Numerator - Quantity Per Pack	1
EAN/UPC - Product/Case	8718696811276
Numerator - Packs per outer box	10
EAN/UPC - Case	8718696811283

Dimensional drawing

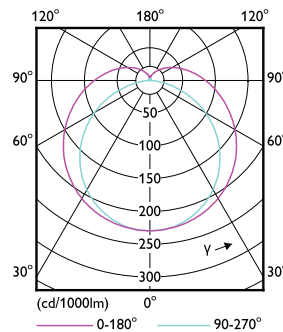


Product	D1	D2	A1	A2	A3
MAS LEDtube 600mm HO VWV 10W 865 T8	25.8 mm	28 mm	588.6 mm	595.6 mm	602.6 mm

Photometric data



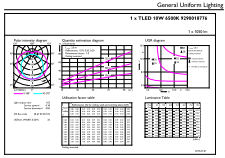
Spectral Power Distribution Colour - MAS LEDtube 600mm HO VWV 10W 865 T8



Light Distribution Diagram - MAS LEDtube 600mm HO VWV 10W 865 T8

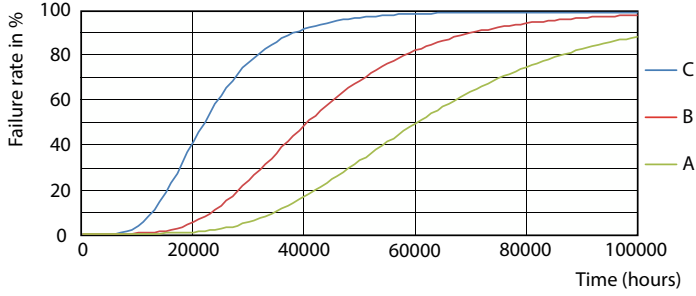
MASTER LEDtube T8

Photometric data

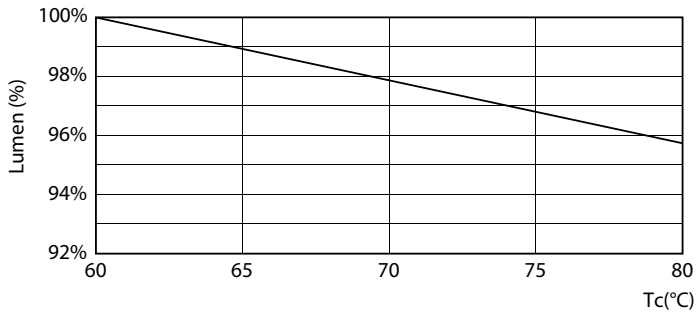


General uniform lighting - MAS LEDtube 600mm HO VVW 10W 865 T8

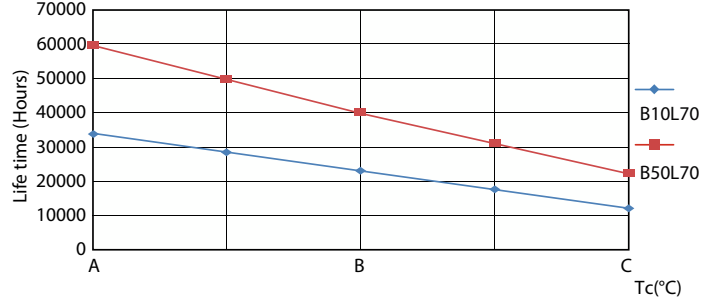
Lifetime



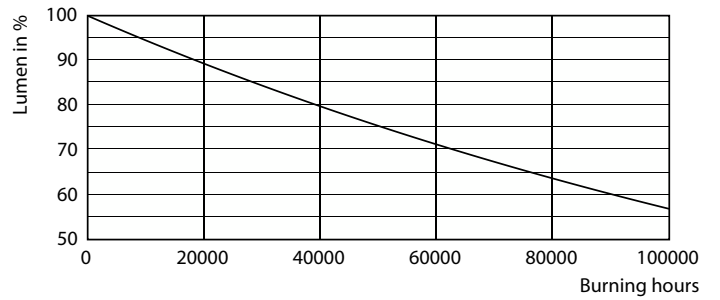
FailureRate



Lumen Maintenance Diagram - MAS LEDtube 600mm HO VVW 10W 865 T8



LifetimeVsTc



Lumen Maintenance Diagram - MAS LEDtube 600mm HO VVW 10W 865 T8

MASTER LEDtube T8

Lifetime



Life Expectancy Diagram

