



MASTER LEDtube T8

MAS LEDtube 600mm HO VWV 10W 840 T8

MASTER, LEDtube, T8, EM/Mains, 600 mm, 100-277 V, 10 W, 17-18W TL-D, 4000 K, 1050 lm, 60000 hour(s)

The Philips MASTER LEDtube integrates a LED light source into a traditional fluorescent form factor. Its unique design creates a perfectly uniform visual appearance, which cannot be distinguished from traditional fluorescent. These T8 LED tubes are the right choice for absolute performance and are designed to stand up to everyday conditions. Unparalleled savings thanks to low energy consumption and an exceptionally long lifetime ensure this tube masters every demanding application.

Warnings and Safety

· NOTE: The overall energy efficiency and light distribution of any installation that uses these lamps will be determined by the design of the installation.

Product data

General Information		Luminous Efficacy (rated) (Nom)	
Cap-Base	G13		105.00 lm/W
Nominal lifetime	60,000 hour(s)	Color Consistency	<6
Switching Cycle	200,000	Color rendering index (CRI)	80
Lighting Technology	LEDtube	LLMF At End Of Nominal Lifetime (Nom)	70 %
Light Technical		Operating and Electrical	
Color Code	840 [CCT of 4000K]	Line Frequency	50 to 60 Hz
Beam Angle (Nom)	160 degree(s)	Input Frequency	50 to 60 Hz
Luminous Flux	1,050 lm	Power Consumption	10 W
Color Designation	Cool White (CW)	Lamp Current (Max)	101 mA
Correlated Color Temperature (Nom)	4000 K	Lamp Current (Min)	38 mA
		Starting Time (Nom)	0.5 s

MASTER LEDtube T8

Warm-up time to 60% light	0.5 s
Power Factor (Fraction)	0.90
Voltage (Nom)	100-277 V
LED alternative to fluorescent lamp power	17-18W TL-D
Ballast Compatibility	EM/Mains

Temperature

T-Case Maximum (Nom)	60 °C
----------------------	-------

Controls and Dimming

Dimmable	No
----------	----

Mechanical and Housing

Bulb Finish	Frosted
Product Length	600 mm
Bulb Shape	T8
Net Weight (Piece)	0.120 kg

Approval and Application

Energy Saving Product	Yes
Approval Marks	RoHS compliance CE marking UL certificate KEMA Keur certificate

Energy Consumption kWh/1000 h	10 kWh
EU RoHS compliant	Yes
Ambient temperature range	-20 °C to 45 °C

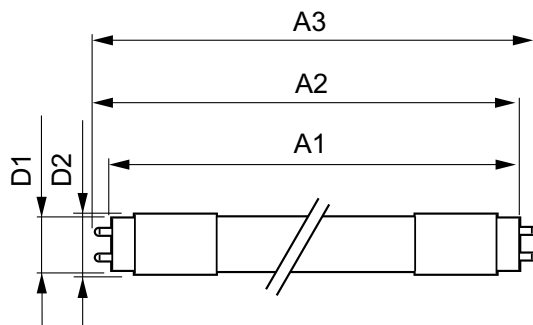
Application Conditions

Wireless Technology	Not applicable
---------------------	----------------

Product Data

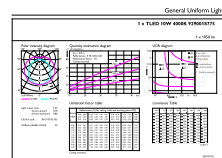
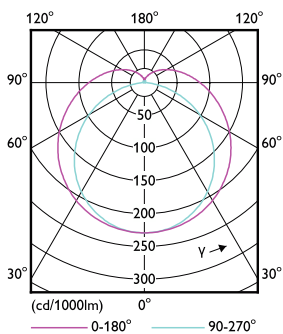
Order product name	MAS LEDtube 600mm HO VWV 10W 840 T8
Full product name	MAS LEDtube 600mm HO VWV 10W 840 T8
Full product code	871869681123800
Order code	929001877512
Material Nr. (12NC)	929001877512
Numerator - Quantity Per Pack	1
EAN/UPC - Product/Case	8718696811238
Numerator - Packs per outer box	10
EAN/UPC - Case	8718696811245

Dimensional drawing



Product	D1	D2	A1	A2	A3
MAS LEDtube 600mm HO VWV 10W 840 T8	25.8 mm	28 mm	588.5 mm	595.5 mm	602.5 mm

Photometric data

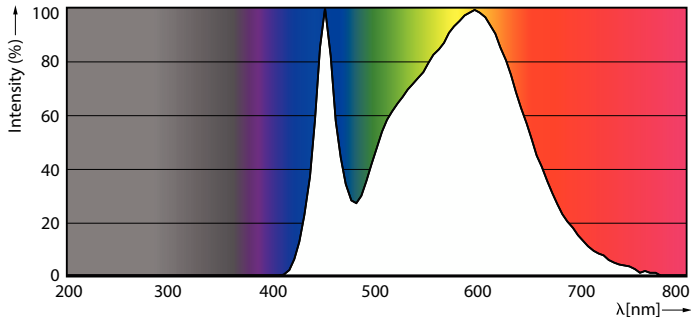


Light Distribution Diagram - MAS LEDtube 600mm HO VWV 10W 840 T8

General uniform lighting - MAS LEDtube 600mm HO VWV 10W 840 T8

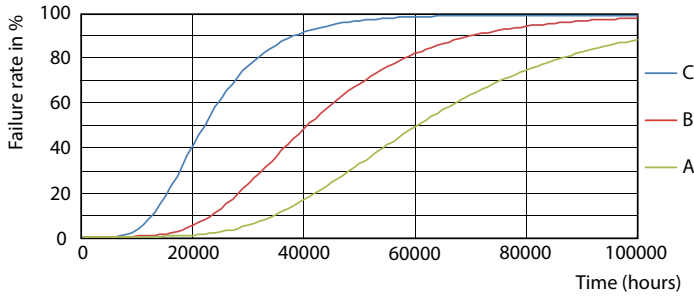
MASTER LEDtube T8

Photometric data

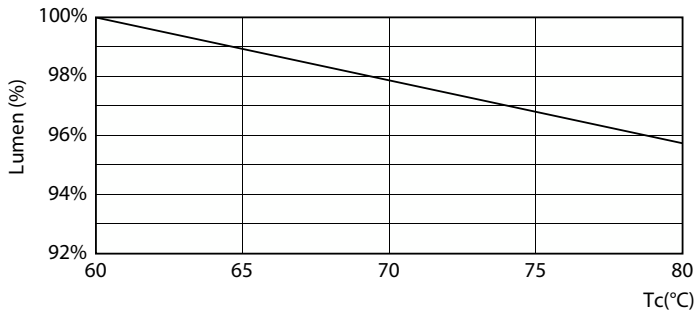


Spectral Power Distribution Colour - MAS LEDtube 600mm HO VWV 10W 840 T8

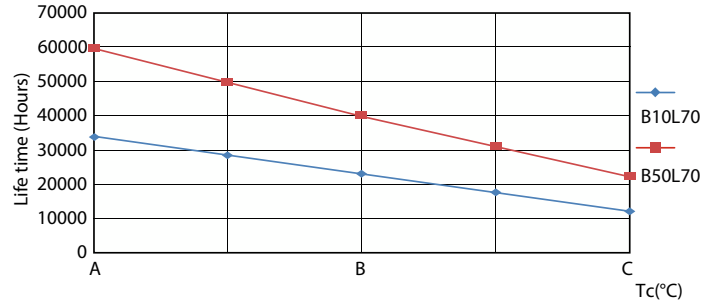
Lifetime



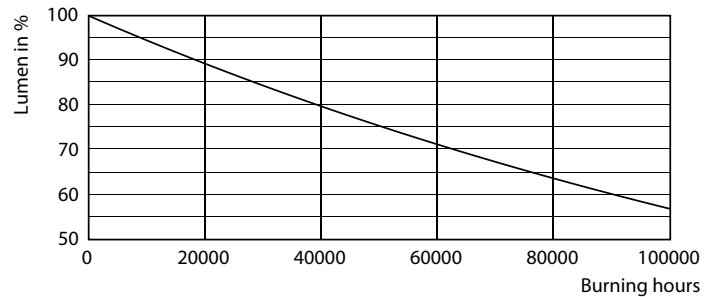
FailureRate



Lumen Maintenance Diagram - MAS LEDtube 600mm HO VWV 10W 840 T8



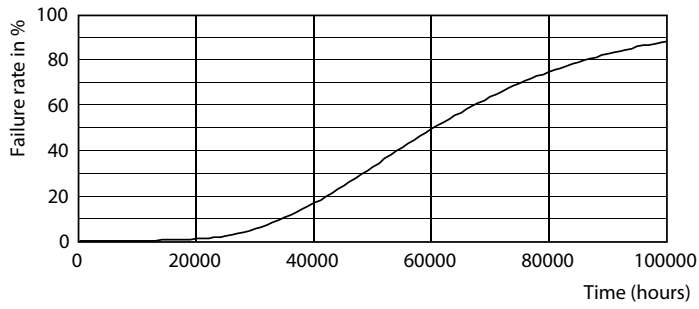
LifetimeVsTc



Lumen Maintenance Diagram - MAS LEDtube 600mm HO VWV 10W 840 T8

MASTER LEDtube T8

Lifetime



Life Expectancy Diagram

