



InstantFit (UL Type-A) T5

14T5HE/46-830/IF20/G/DIM 10/1

CorePro, LEDtube, T5, 1200 mm, 14 W, 3000 K, 2000 lm, 50000 hour(s)

CorePro, LEDtube, T5, 1200 mm, 14 W, 3000 K, 2000 lm, 50000 hour(s), 142.00 lm/W, G5, Glass

Product data

| General Information | | Input Frequency | |
|---------------------------------------|--------------------|---------------------------|-----------------|
| Cap-Base | G5 | | 40000-110000 Hz |
| Nominal lifetime | 50,000 hour(s) | Power Consumption | 14 W |
| Switching Cycle | 50,000 | Lamp Current (Max) | 350 mA |
| Lighting Technology | LEDtube | Lamp Current (Min) | 150 mA |
| Light Technical | | Wattage Equivalent | 28 W |
| Color Code | 830 [CCT of 3000K] | Starting Time (Nom) | 0.5 s |
| Beam Angle (Nom) | 200 degree(s) | Warm-up time to 60% light | 0.5 s |
| Luminous Flux | 2,000 lm | Power Factor (Fraction) | 0.9 |
| Color Designation | White (WH) | Voltage (Nom) | 70-105 V |
| Correlated Color Temperature (Nom) | 3000 K | UL Type | UL Type A |
| Luminous Efficacy (rated) (Nom) | 142.00 lm/W | Temperature | |
| Color Consistency | <6 | T-Case Maximum (Nom) | 70 °C |
| Color rendering index (CRI) | 82 | Controls and Dimming | |
| LLMF At End Of Nominal Lifetime (Nom) | 70 % | Dimmable | Yes |
| Operating and Electrical | | Mechanical and Housing | |
| Line Frequency | 40000-110000 Hz | Bulb Finish | Frosted |

InstantFit (UL Type-A) T5

| | |
|--------------------|----------|
| Bulb Material | Glass |
| Product Length | 1,200 mm |
| Bulb Shape | T5 |
| Net Weight (Piece) | 0.146 kg |

Approval and Application

| | |
|---------------------------|--------------------------------|
| Energy Saving Product | Yes |
| Approval Marks | UL certificate RoHS compliance |
| Energy Certifications | DLC Standard |
| EU RoHS compliant | Yes |
| Ambient temperature range | -20 °C to 45 °C |

Application Conditions

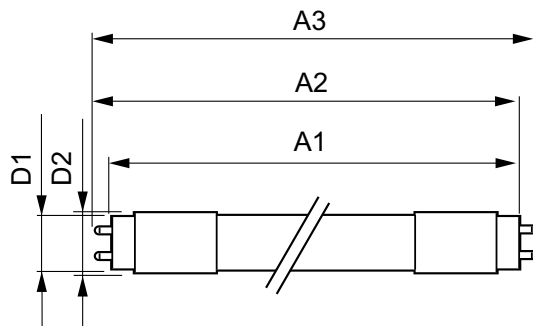
| | |
|-------------------------------------|-----|
| can it be used in closed luminaires | Yes |
|-------------------------------------|-----|

| | |
|---------------------|----------------|
| Wireless Technology | Not applicable |
|---------------------|----------------|

Product Data

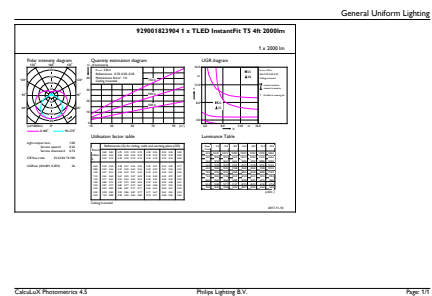
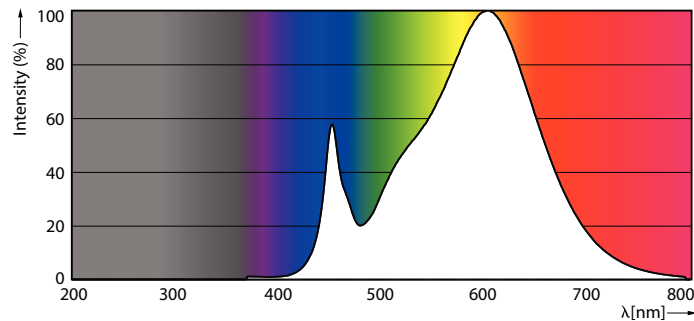
| | |
|---------------------------------|-------------------------------|
| Order product name | 14T5HE/46-830/IF20/G/DIM 10/1 |
| Full product name | 14T5HE/46-830/IF20/G/DIM 10/1 |
| Order code | 929001823904 |
| Material Nr. (12NC) | 929001823904 |
| Numerator - Quantity Per Pack | 1 |
| EAN/UPC - Product/Case | 046677476496 |
| Numerator - Packs per outer box | 10 |
| EAN/UPC - Case | 50046677476491 |

Dimensional drawing



| Product | D1 | D2 | A1 | A2 | A3 |
|-------------------------------|---------|---------|------------|------------|----------|
| 14T5HE/46-830/IF20/G/DIM 10/1 | 15.3 mm | 18.4 mm | 1,147.8 mm | 1,154.9 mm | 1,162 mm |

Photometric data

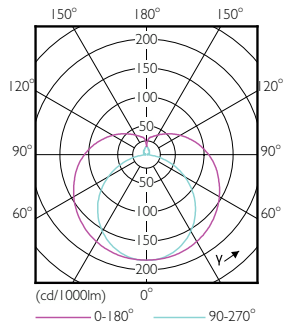


Spectral Power Distribution Colour - 14T5HE/46-830/IF20/G/DIM 10/1

General uniform lighting - 14T5HE/46-830/IF20/G/DIM 10/1

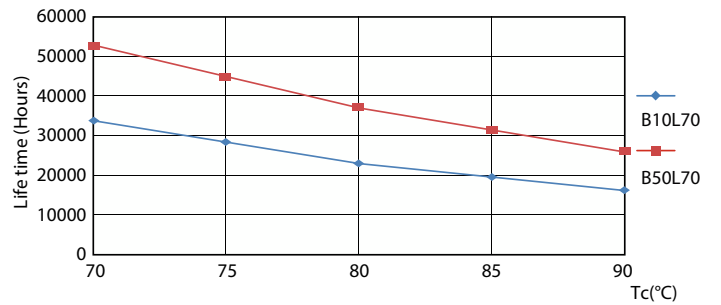
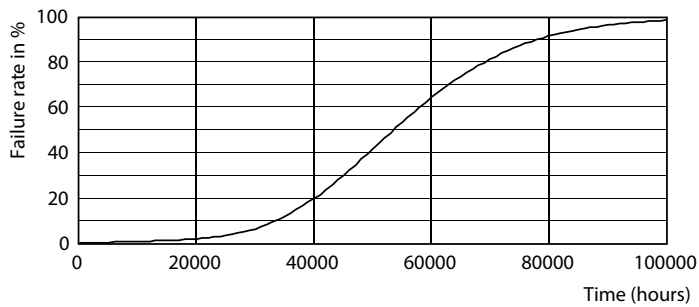
InstantFit (UL Type-A) T5

Photometric data



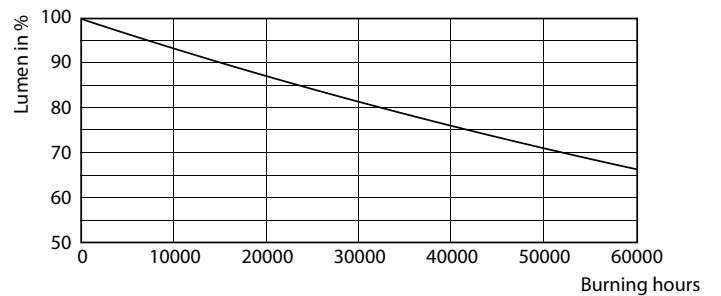
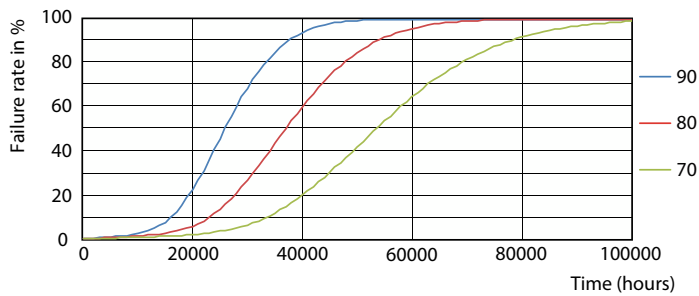
Light Distribution Diagram - 14T5HE/46-830/IF20/G/DIM 10/1

Lifetime



LEDtube 8-14W G5 830-850 200D DIM IF10-21

LEDtube 8-14W G5 830-850 200D DIM IF10-21

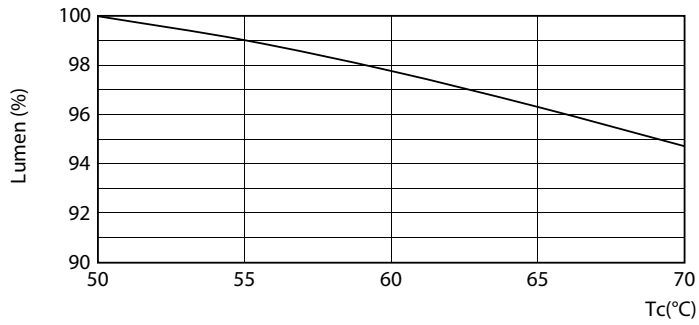


LEDtube 8-14W G5 830-850 200D DIM IF10-21

Lumen Maintenance Diagram - 14T5HE/46-830/IF20/G/DIM 10/1

InstantFit (UL Type-A) T5

Lifetime



Lumen Maintenance Diagram - 14T5HE/46-830/IF20/G/DIM 10/1

