



InstantFit (UL Type-A) T5

11T5HE/34-835/IF14/G/DIM 10/1

CorePro, LEDtube, T5, 900 mm, 11 W, 3500 K, 1400 lm, 50000 hour(s)

The InstantFit TLED lamps provide hassle-free installation with simple lamp-for-lamp replacements. They deliver what we promise, with at least 40% energy savings, flicker-free performance, and the life you would expect. Other lamps claim compatibility but only InstantFit (UL Type-A) has been proven to work with over 200 ballasts and drivers, delivering even light output, with proven energy savings and a long average lifetime. End users will be delighted being under these comfortable and high quality InstantFit lamps with no visible flicker and optimized optics. Energy managers will enjoy the InstantFit lamps too as they can count the savings delivered by our lamps. To enjoy more energy savings, the InstantFit lamps can be paired with the Advance TLED drivers to create a Type C system.

Product data

General Information		Operating and Electrical	
Cap-Base	G5	Correlated Color Temperature (Nom)	3500 K
Nominal lifetime	50,000 hour(s)	Luminous Efficacy (rated) (Nom)	127.00 lm/W
Switching Cycle	50,000	Color Consistency	<6
Lighting Technology	LEDtube	Color rendering index (CRI)	82
		LLMF At End Of Nominal Lifetime (Nom)	70 %
Light Technical			
Color Code	835 [CCT of 3500K]	Line Frequency	40000-110000 Hz
Beam Angle (Nom)	200 degree(s)	Input Frequency	40000-110000 Hz
Luminous Flux	1,400 lm	Power Consumption	11 W
Color Designation	White (WH)	Lamp Current (Max)	400 mA

InstantFit (UL Type-A) T5

Lamp Current (Min)	60 mA
Wattage Equivalent	21 W
Starting Time (Nom)	0.5 s
Warm-up time to 60% light	0.5 s
Power Factor (Fraction)	0.9
Voltage (Nom)	50-80 V
UL Type	UL Type A

Temperature

T-Case Maximum (Nom)	70 °C
----------------------	-------

Controls and Dimming

Dimmable	Yes
----------	-----

Mechanical and Housing

Bulb Finish	Frosted
Bulb Material	Glass
Product Length	900 mm
Bulb Shape	T5
Net Weight (Piece)	0.110 kg

Approval and Application

Energy Saving Product	Yes
Approval Marks	UL certificate RoHS compliance
EU RoHS compliant	Yes
Ambient temperature range	-20 °C to 45 °C

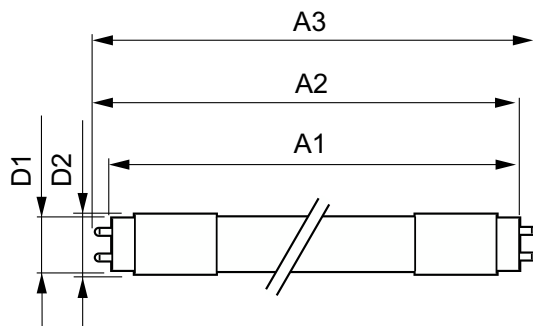
Application Conditions

can it be used in closed luminaires	Yes
-------------------------------------	-----

Product Data

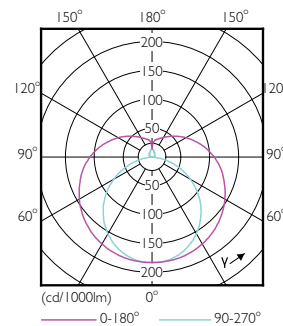
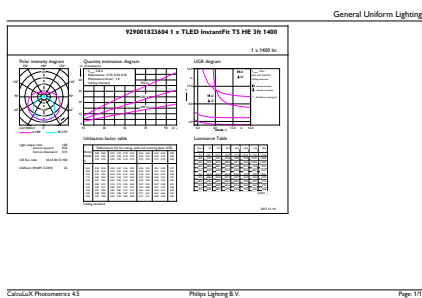
Order product name	11T5HE/34-835/IF14/G/DIM 10/1
Full product name	11T5HE/34-835/IF14/G/DIM 10/1
Order code	929001823604
Material Nr. (12NC)	929001823604
Numerator - Quantity Per Pack	1
EAN/UPC - Product/Case	046677476465
Numerator - Packs per outer box	10
EAN/UPC - Case	50046677476460

Dimensional drawing



Product	D1	D2	A1	A2	A3
11T5HE/34-835/IF14/G/DIM 10/1	15.3 mm	18.4 mm	847.8 mm	854.9 mm	862 mm

Photometric data

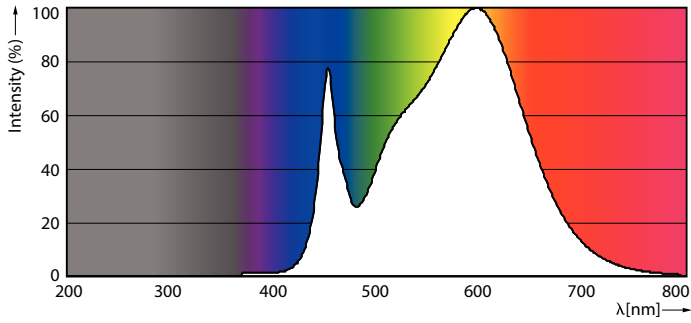


General uniform lighting - 11T5HE/34-835/IF14/G/DIM 10/1

Light Distribution Diagram - 11T5HE/34-835/IF14/G/DIM 10/1

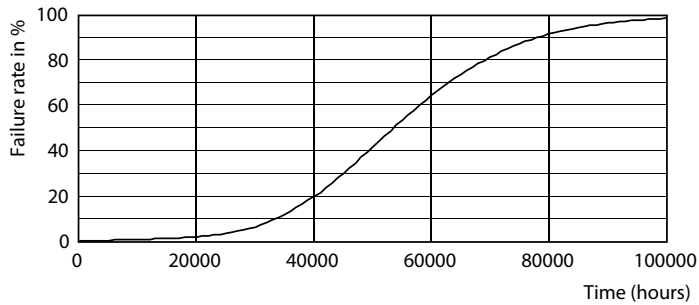
InstantFit (UL Type-A) T5

Photometric data

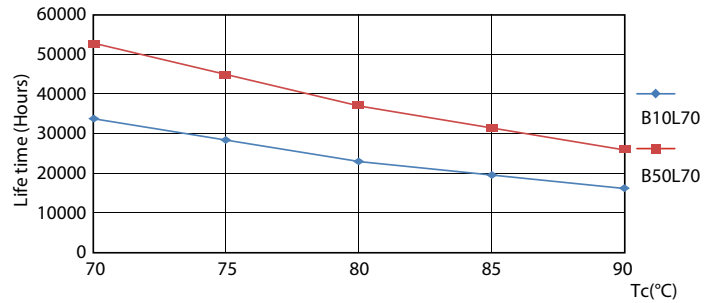


Spectral Power Distribution Colour - 11T5HE/34-835/IF14/G/DIM 10/1

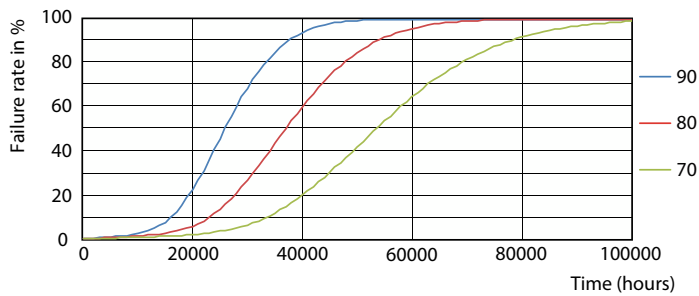
Lifetime



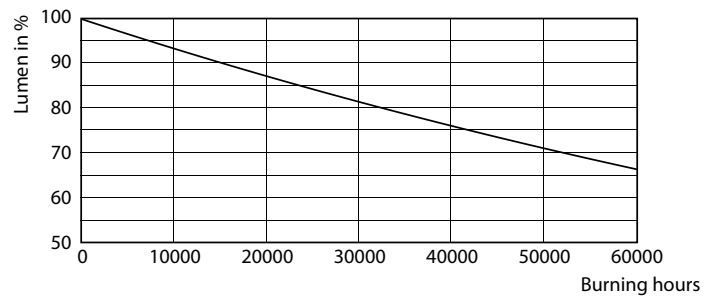
LEDtube 8-14W G5 830-850 200D DIM IF10-21



LEDtube 8-14W G5 830-850 200D DIM IF10-21



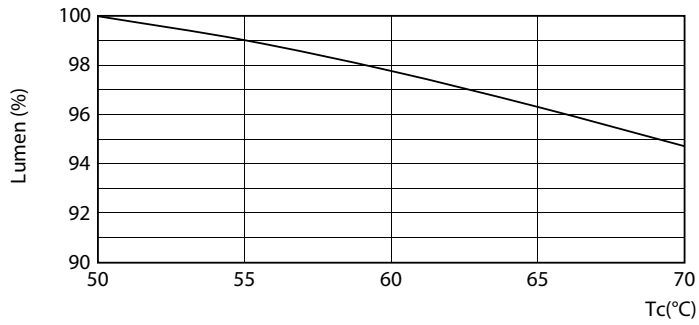
LEDtube 8-14W G5 830-850 200D DIM IF10-21



Lumen Maintenance Diagram - 11T5HE/34-835/IF14/G/DIM 10/1

InstantFit (UL Type-A) T5

Lifetime



Lumen Maintenance Diagram - 11T5HE/34-835/IF14/G/DIM 10/1

