



# MASTER LED tube InstantFit HF T5

## Master LEDtube HF 1500mm HE 20W 840 T5

MASTER, LEDtube, T5, HF, 1500 mm, 20 W, 35W TL5 HE, 4000 K, 3000 lm, CRI 80, 60000 hour(s)

The Philips MASTER LEDtube integrates a LED light source into a traditional fluorescent form factor. Its unique design creates a perfectly uniform visual appearance, which cannot be distinguished from traditional fluorescent. These T5 lighting tubes are the right choice for absolute performance and are designed to stand up to everyday conditions. Unparalleled savings thanks to low energy consumption and an exceptionally long lifetime make these T5 LED tubes the choice for every demanding application.

### Product data

General Information		Color Consistency	
Cap-Base	G5	Color rendering index (CRI)	80
Nominal lifetime	60,000 hour(s)	LLMF At End Of Nominal Lifetime (Nom)	70 %
Switching Cycle	50,000	Photobiological safety according to EN 62471	RG0
Lighting Technology	LEDtube	Operating and Electrical	
Flux measurement reference	Sphere	Line Frequency	30K to 100K Hz
Light Technical		Input Frequency	30K to 100K Hz
Color Code	840 [CCT of 4000K]	Power Consumption	20 W
Beam Angle (Nom)	200 degree(s)	Lamp Current (Max)	350 mA
Luminous Flux	3,000 lm	Lamp Current (Min)	150 mA
Color Designation	Cool White (CW)	Starting Time (Nom)	0.5 s
Correlated Color Temperature (Nom)	4000 K	Warm-up time to 60% light	0.5 s
Luminous Efficacy (rated) (Nom)	150 lm/W	Power Factor (Fraction)	0.92

# MASTER LED tube InstantFit HF T5

Voltage (Nom)	80-130 V
LED alternative to fluorescent lamp power	35W TL5 HE
Inrush current at mains	-
Max. lamp no. on MCB B type 10A – Mains	-
Max. lamp no. on MCB B type 10A – EM ballast without Compensation Capacitor.	-
Max. lamp no. on MCB B type 10A – EM ballast with Compensation Capacitor.	-
Max. lamp no. on MCB B type 16A – Mains	-
Max. lamp no. on MCB B type 16A – EM ballast without Compensation Capacitor.	-
Max. lamp no. on MCB B type 16A – EM ballast with Compensation Capacitor.	-
Ballast Compatibility	HF

## Temperature

T-Case Maximum (Nom)	65 °C
----------------------	-------

## Controls and Dimming

Dimmable	Yes - Check ballast compatibility
----------	-----------------------------------

## Mechanical and Housing

Bulb Finish	Frosted
Bulb Material	Glass
Product Length	1,500 mm
Bulb Shape	T5
Net Weight (Piece)	0.196 kg

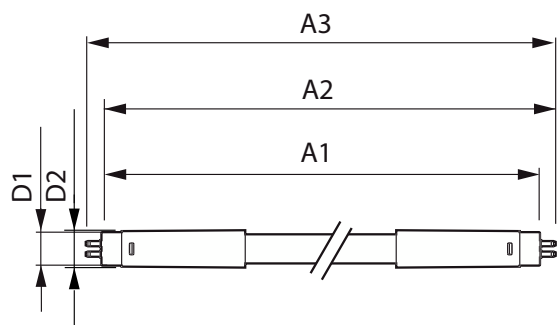
## Approval and Application

Energy Efficiency Class	D
Energy Saving Product	Yes
Approval Marks	RoHS compliance KEMA Keur certificate
Energy Consumption kWh/1000 h	20 kWh
EPREL Registration Number	1384138
CE mark	Yes
EU RoHS compliant	Yes
Ambient temperature range	-20 °C to 45 °C

## Product Data

Order product name	MAS LEDtube HF 1500mm HE 20W 840 T5
Full product name	Master LEDtube HF 1500mm HE 20W 840 T5
Full product code	871869674337900
Order code	74337900
Material Nr. (12NC)	929001391402
Numerator - Quantity Per Pack	1
EAN/UPC - Product/Case	8718696743379
Numerator - Packs per outer box	10
EAN/UPC - Case	8718696743386

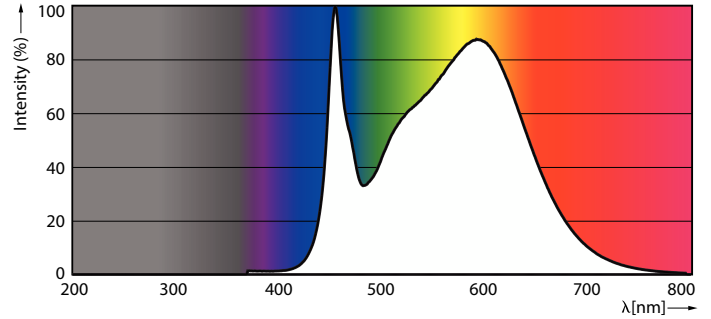
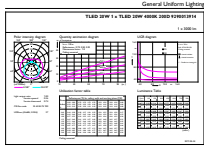
## Dimensional drawing



Product	D1	D2	A1	A2	A3
MAS LEDtube HF 1500mm HE 20W 840 T5	15.5 mm	18.8 mm	1,449 mm	1,456.1 mm	1,463.2 mm

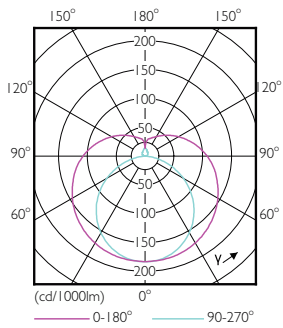
# MASTER LED tube InstantFit HF T5

## Photometric data



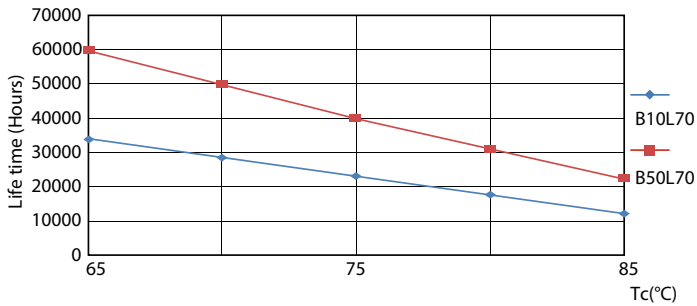
General uniform lighting - MAS LEDtube HF 1500mm HE 20W 840 T5

Spectral Power Distribution Colour - MAS LEDtube HF 1500mm HE 20W 840 T5

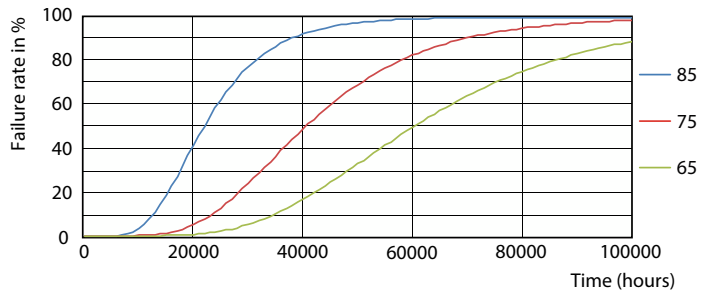


Light Distribution Diagram - MAS LEDtube HF 1500mm HE 20W 840 T5

## Lifetime



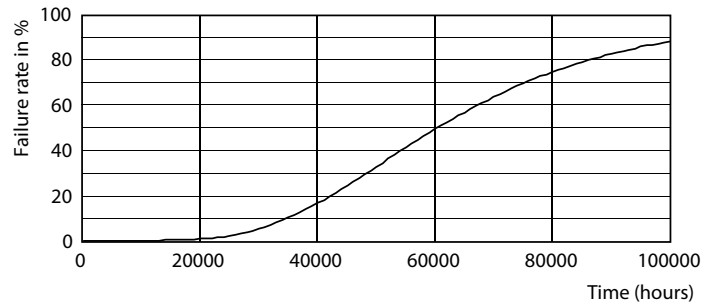
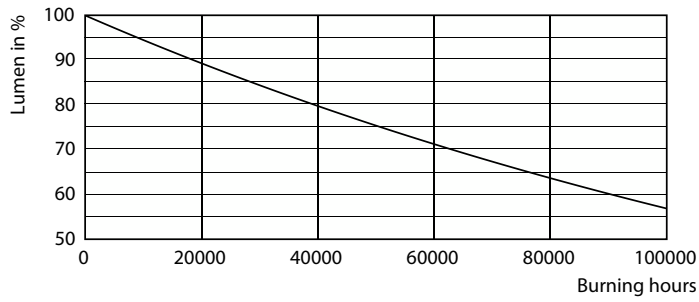
LifetimeVsTc



FailureRate

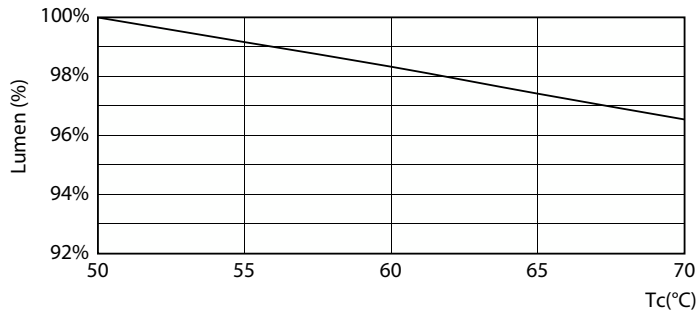
# MASTER LED tube InstantFit HF T5

## Lifetime



Lumen Maintenance Diagram - MAS LEDtube HF 1500mm HE 20W 840 T5

Life Expectancy Diagram



Lumen Maintenance Diagram - MAS LEDtube HF 1500mm HE 20W 840 T5

