



MASTER LED tube InstantFit HF T5



MAS LEDtube HF 1200mm HE 16.5W 830 T5

MASTER, LEDtube, T5, HF, 1200 mm, 16.5 W, 28W TL5 HE, 3000 K, 2300 lm, CRI 80, 60000 hour(s)

The Philips MASTER LEDtube integrates a LED light source into a traditional fluorescent form factor. Its unique design creates a perfectly uniform visual appearance, which cannot be distinguished from traditional fluorescent. These T5 lighting tubes are the right choice for absolute performance and are designed to stand up to everyday conditions. Unparalleled savings thanks to low energy consumption and an exceptionally long lifetime make these T5 LED tubes the choice for every demanding application.

Product data

General Information	
Cap-Base	G5
Nominal lifetime	60,000 hour(s)
Switching Cycle	50,000
Lighting Technology	LEDtube
Flux measurement reference	Sphere
Warranty period	5 years

Light Technical	
Color Code	830 [CCT of 3000K]
Beam Angle (Nom)	200 degree(s)
Luminous Flux	2,300 lm
Color Designation	White (WH)
Correlated Color Temperature (Nom)	3000 K

Luminous Efficacy (rated) (Nom)	139.00 lm/W
Color Consistency	<6
Color rendering index (CRI)	80
LLMF At End Of Nominal Lifetime (Nom)	70 %
Photobiological safety according to EN 62471	RG0

Operating and Electrical	
Line Frequency	30K to 100K Hz
Input Frequency	30K to 100K Hz
Power Consumption	16.5 W
Lamp Current (Max)	350 mA
Lamp Current (Min)	150 mA
Starting Time (Nom)	0.5 s
Warm-up time to 60% light	0.5 s

MASTER LED tube InstantFit HF T5

Power Factor (Fraction)	0.92
Voltage (Nom)	70-120 V
LED alternative to fluorescent lamp power	28W TL5 HE
Inrush current at mains	-
Max. lamp no. on MCB B type 10A – Mains	-
Max. lamp no. on MCB B type 10A – EM ballast without Compensation Capacitor.	-
Max. lamp no. on MCB B type 10A – EM ballast with Compensation Capacitor.	-
Max. lamp no. on MCB B type 16A – Mains	-
Max. lamp no. on MCB B type 16A – EM ballast without Compensation Capacitor.	-
Max. lamp no. on MCB B type 16A – EM ballast with Compensation Capacitor.	-
Ballast Compatibility	HF

Temperature

T-Case Maximum (Nom)	65 °C
----------------------	-------

Controls and Dimming

Dimmable	Yes - Check ballast compatibility
----------	-----------------------------------

Mechanical and Housing

Bulb Finish	Frosted
Bulb Material	Glass
Product Length	1,200 mm
Bulb Shape	T5

Net Weight (Piece)	0.160 kg
--------------------	----------

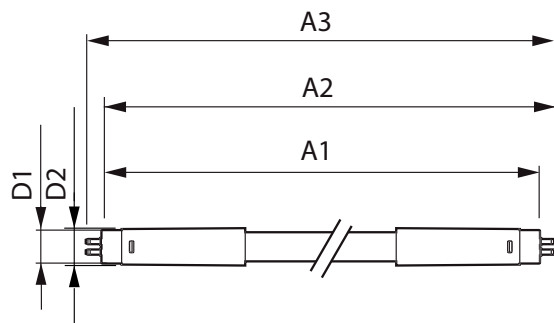
Approval and Application

Energy Efficiency Class	E
Energy Saving Product	Yes
Approval Marks	RoHS compliance KEMA Keur certificate
Energy Consumption kWh/1000 h	17 kWh
EPREL Registration Number	1384134
CE mark	Yes
EU RoHS compliant	Yes
Ambient temperature range	-20 °C to 45 °C

Product Data

Order product name	MAS LEDtube HF 1200mm HE 16.5W 830 T5
Full product name	MAS LEDtube HF 1200mm HE 16.5W 830 T5
Full product code	871869674329400
Order code	929001391002
Material Nr. (12NC)	929001391002
Numerator - Quantity Per Pack	1
EAN/UPC - Product/Case	8718696743294
Numerator - Packs per outer box	10
EAN/UPC - Case	8718696743300

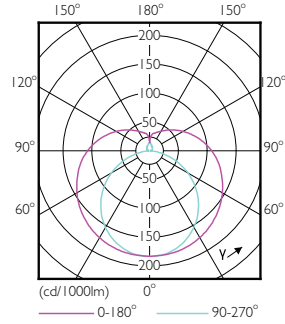
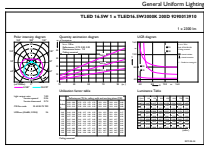
Dimensional drawing



Product	D1	D2	A1	A2	A3
MAS LEDtube HF 1200mm HE 16.5W 830 T5	15.5 mm	18.8 mm	1,149 mm	1,156.1 mm	1,163.2 mm

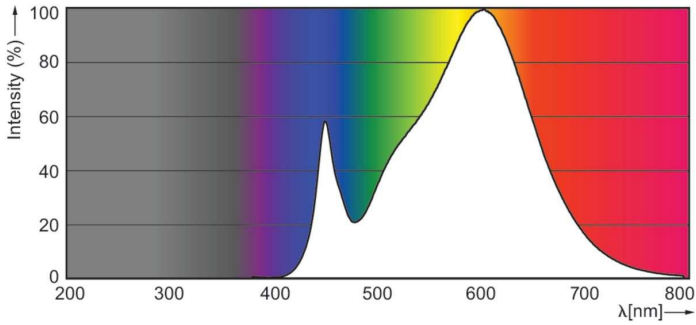
MASTER LED tube InstantFit HF T5

Photometric data



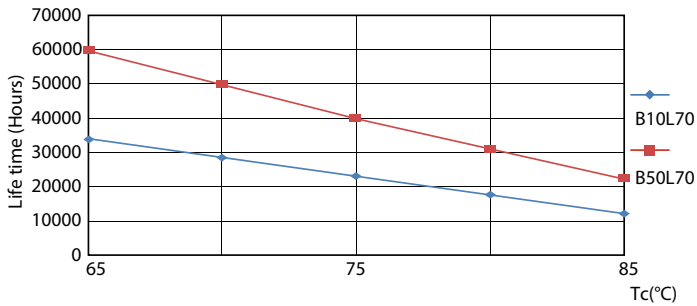
General uniform lighting - MAS LEDtube HF 1200mm HE 16.5W 830 T5

Light Distribution Diagram - MAS LEDtube HF 1200mm HE 16.5W 830 T5

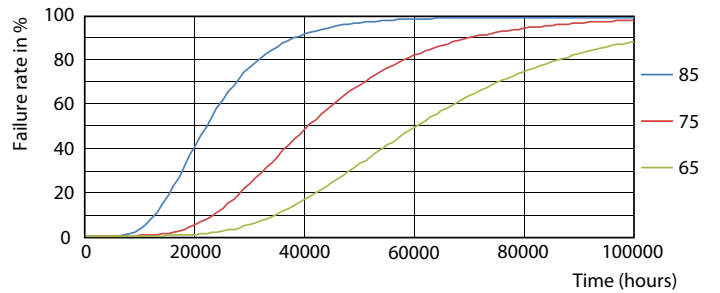


Spectral Power Distribution Colour - MAS LEDtube HF 1200mm HE 16.5W 830 T5

Lifetime



LifetimeVsTc



FailureRate

MASTER LED tube InstantFit HF T5

Lifetime



Lumen Maintenance Diagram - MAS LEDtube HF 1200mm HE 16.5W 830 T5

Life Expectancy Diagram



Lumen Maintenance Diagram - MAS LEDtube HF 1200mm HE 16.5W 830 T5

