



# CorePro LED tube Mains T5

## CorePro LEDtube 1200mm 16W865 G5 PH

CorePro, LEDtube, T5, Mains, 1200 mm, 100-240 V, 16 W, 28W TL5 HE, 6500 K, 2100 lm, 30000 hour(s)

CorePro, LEDtube, T5, Mains, 1200 mm, 100-240 V, 16 W, LED alternative to 28W TL5 HE, 6500 K, 2100 lm, 30000 hour(s), 131 lm/W, G5, Beam angle 200 degree(s), Glass

### Product data

General Information		Operating and Electrical	
Cap-Base	G5	Input Frequency	50 to 60 Hz
Nominal lifetime	30,000 hour(s)	Power Consumption	16 W
Switching Cycle	50,000	Lamp Current (Max)	170 mA
Lighting Technology	LEDtube	Lamp Current (Min)	60 mA
<b>Light Technical</b>		Wattage Equivalent	28 W
Color Code	865 [CCT of 6500K]	Starting Time (Nom)	0.5 s
Beam Angle (Nom)	200 degree(s)	Warm-up time to 60% light	0.5 s
Luminous Flux	2,100 lm	Power Factor (Fraction)	0.9
Color Designation	Cool Daylight	Voltage (Nom)	100-240 V
Correlated Color Temperature (Nom)	6500 K	LED alternative to fluorescent lamp power	28W TL5 HE
Luminous Efficacy (rated) (Nom)	131 lm/W	Ballast Compatibility	Mains
Color Consistency	<6	<b>Temperature</b>	
Color rendering index (CRI)	80	T-Case Maximum (Nom)	70 °C
LLMF At End Of Nominal Lifetime (Nom)	70 %		

# CorePro LED tube Mains T5

## Controls and Dimming

Dimmable	No
----------	----

## Mechanical and Housing

Bulb Finish	Frosted
Bulb Material	Glass
Product Length	1,200 mm
Bulb Shape	T5
Net Weight (Piece)	0.135 kg

## Approval and Application

Energy Saving Product	Yes
Approval Marks	RoHS compliance KEMA Keur certificate
EU RoHS compliant	Yes
Ambient temperature range	-20 to +45 °C

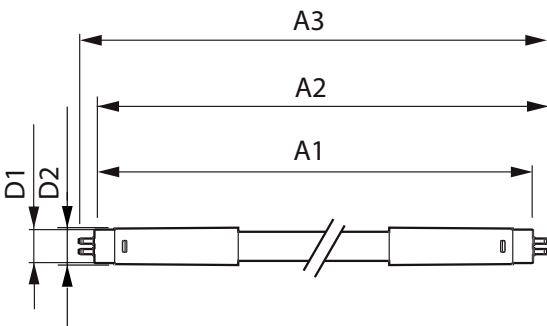
## Application Conditions

Wireless Technology	Not applicable
---------------------	----------------

## Product Data

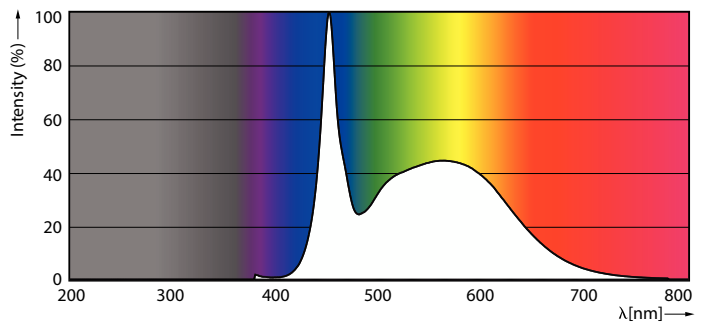
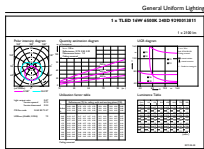
Order product name	CorePro LEDtube 1200mm 16W865 G5 PH
Full product name	CorePro LEDtube 1200mm 16W865 G5 PH
Full product code	872016919698800
Order code	929001381188
Material Nr. (12NC)	929001381188
Numerator - Quantity Per Pack	1
EAN/UPC - Product/Case	8720169196988
Numerator - Packs per outer box	20
EAN/UPC - Case	8720169196995

## Dimensional drawing



Product	D1	D2	A1	A2	A3
CorePro LEDtube 1200mm 16W865 G5 PH	15.8 mm	19 mm	1,149 mm	1,156.1 mm	1,163.2 mm

## Photometric data

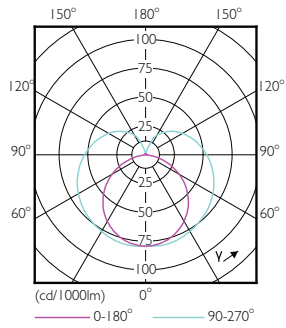


General uniform lighting - CorePro LEDtube 1200mm 16W865 G5 PH

Spectral Power Distribution Colour - CorePro LEDtube 1200mm 16W865 G5 PH

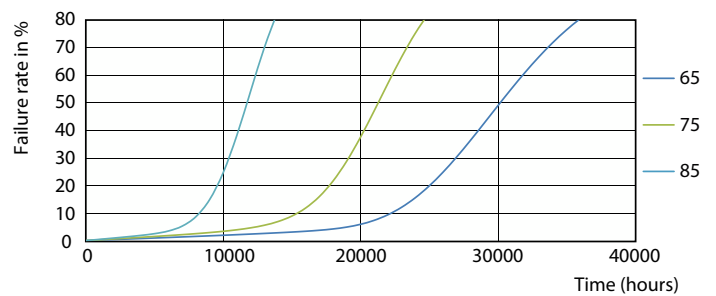
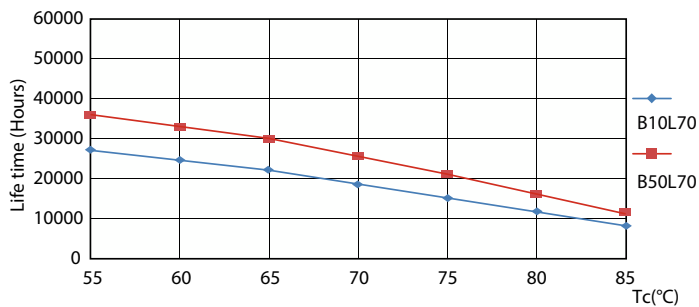
# CorePro LED tube Mains T5

## Photometric data



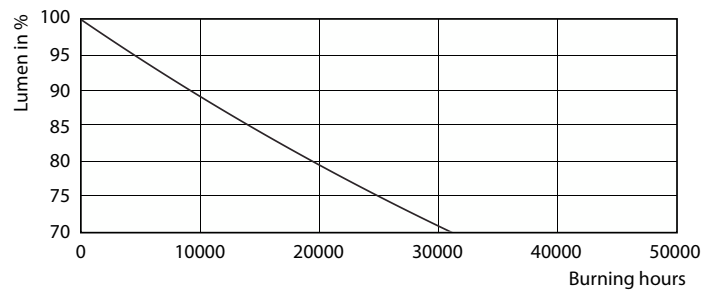
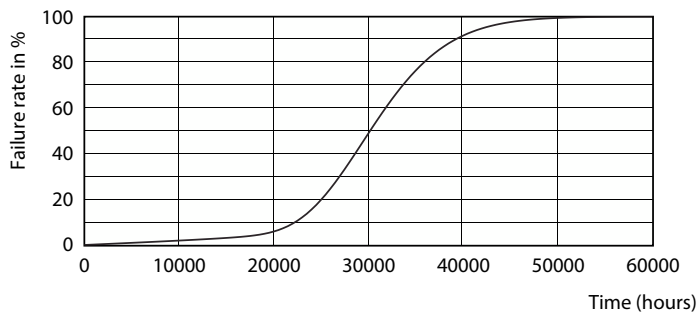
Light Distribution Diagram - CorePro LEDtube 1200mm 16W865 G5 PH

## Lifetime



ESSENTIAL LEDtube 8-16W G5 830-865 APR

ESSENTIAL LEDtube 8-16W G5 830-865 APR

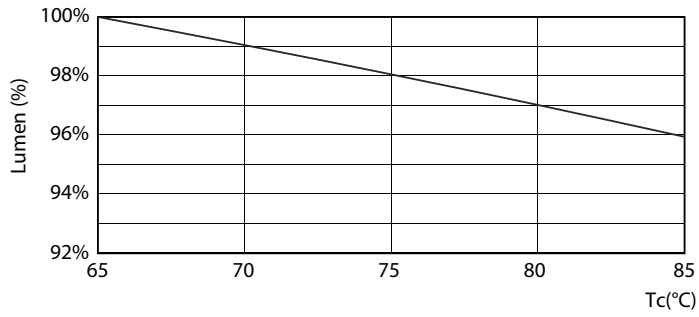


ESSENTIAL LEDtube 8-16W G5 830-865 APR

Lumen Maintenance Diagram - CorePro LEDtube 1200mm 16W865 G5 PH

# CorePro LED tube Mains T5

## Lifetime



Lumen Maintenance Diagram - CorePro LEDtube 1200mm 16W865 G5 PH

