



# CorePro LED tube Mains T5

## CorePro LEDtube 1200mm 16W865 G5 I APRCN

LEDtube, T5, 1200 mm, 16 W, 6500 K, 2100 lm, 30000 hour(s)

The professional LEDtube MainsFit is a better LED solution suitable for replacing T5 fluorescent lamps. The product provides a natural lighting effect for use in general lighting applications, as well as instant energy savings – an environmentally friendly solution.

### Product data

General Information	
Cap-Base	G5
Nominal lifetime	30,000 hour(s)
Switching Cycle	50,000
Lighting Technology	LEDtube

Light Technical	
Color Code	865 [CCT of 6500K]
Beam Angle (Nom)	200 degree(s)
Luminous Flux	2,100 lm
Color Designation	Cool Daylight
Correlated Color Temperature (Nom)	6500 K
Luminous Efficacy (rated) (Nom)	131 lm/W
Color Consistency	<6
Color rendering index (CRI)	80
LLMF At End Of Nominal Lifetime (Nom)	70 %
Photobiological safety according to EN 62471	RGO

Operating and Electrical	
Input Frequency	50 to 60 Hz
Power Consumption	16 W
Lamp Current (Max)	170 mA
Lamp Current (Min)	60 mA
Wattage Equivalent	28 W
Starting Time (Nom)	0.5 s
Warm-up time to 60% light	0.5 s
Power Factor (Fraction)	0.9
Voltage (Nom)	100-240 V

Temperature	
T-Case Maximum (Nom)	70 °C

Controls and Dimming	
Dimmable	No

# CorePro LED tube Mains T5

## Mechanical and Housing

Bulb Finish	Frosted
Bulb Material	Glass
Product Length	1,200 mm
Bulb Shape	T5
Net Weight (Piece)	0.135 kg

## Approval and Application

Energy Saving Product	Yes
Approval Marks	RoHS compliance KEMA Keur certificate
EU RoHS compliant	Yes
Ambient temperature range	-20 to +45 °C

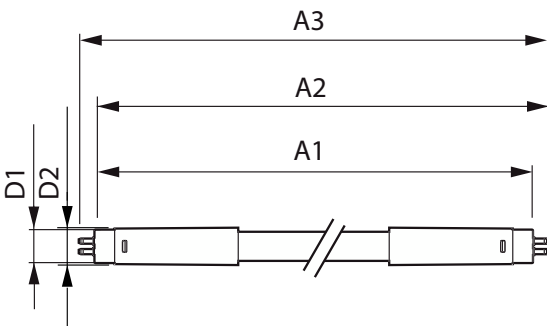
## Application Conditions

Wireless Technology	Not applicable
---------------------	----------------

## Product Data

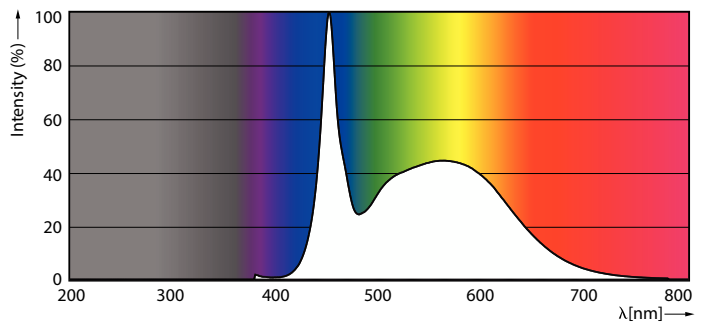
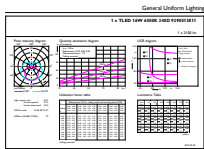
Order product name	CorePro LEDtube 1200mm 16W865 G5 I APRCN
Full product name	CorePro LEDtube 1200mm 16W865 G5 I APRCN
Full product code	872016939023200
Order code	929001381110
Material Nr. (12NC)	929001381110
Numerator - Quantity Per Pack	1
EAN/UPC - Product/Case	8720169390232
Numerator - Packs per outer box	20
EAN/UPC - Case	8720169390249

## Dimensional drawing



Product	D1	D2	A1	A2	A3
CorePro LEDtube 1200mm 16W865 G5 I APRCN	15.8 mm	19 mm	1,149 mm	1,156.1 mm	1,163.2 mm

## Photometric data

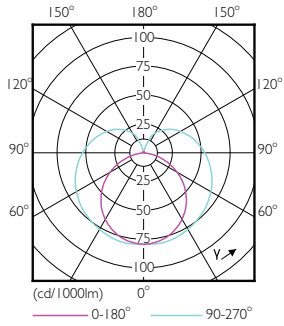


General uniform lighting - CorePro LEDtube 1200mm 16W865 G5 I APRCN

Spectral Power Distribution Colour - CorePro LEDtube 1200mm 16W865 G5 I APRCN

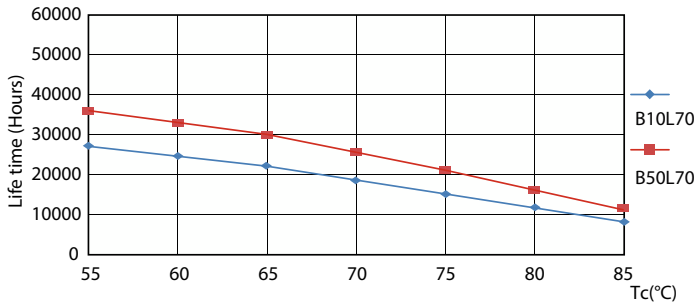
# CorePro LED tube Mains T5

## Photometric data

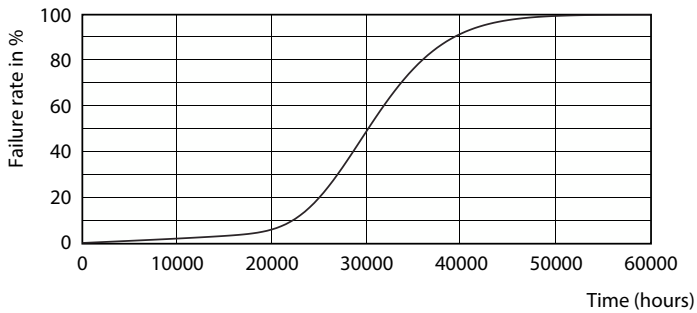


Light Distribution Diagram - CorePro LEDtube 1200mm 16W865 G5 I APRCN

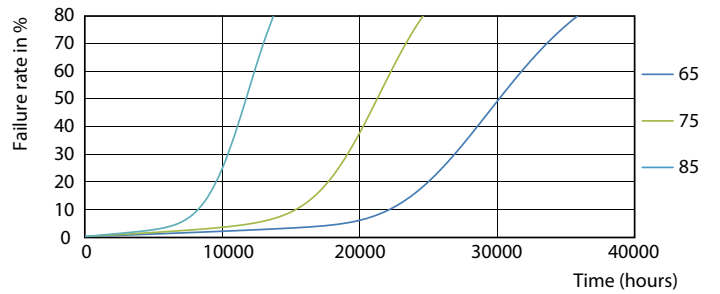
## Lifetime



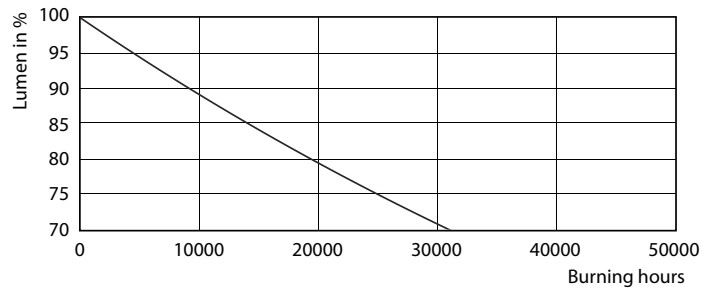
ESSENTIAL LEDtube 8-16W G5 830-865 APR



ESSENTIAL LEDtube 8-16W G5 830-865 APR



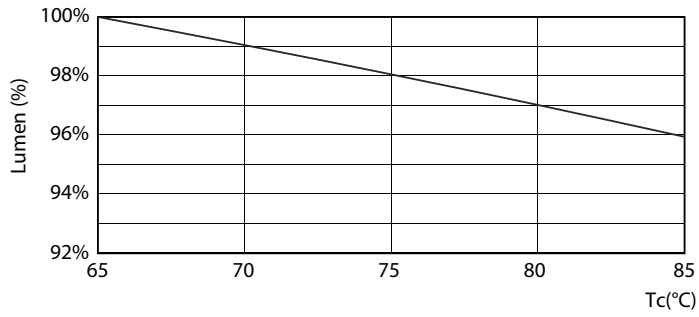
ESSENTIAL LEDtube 8-16W G5 830-865 APR



Lumen Maintenance Diagram - CorePro LEDtube 1200mm 16W865 G5 I APRCN

# CorePro LED tube Mains T5

## Lifetime



Lumen Maintenance Diagram - CorePro LEDtube 1200mm 16W865 G5 I  
APRCN

